

# KAI CHENG

APPLICATION EXPERT OF JIG AND FIXTURE

Korea / Japan Exclusive

 HOMA

TEL: +82-2-894-6417-9

E-MAIL: [homakang@naver.com](mailto:homakang@naver.com)

HEAD OFFICE : 2F, 35-6 SIHEUNG-DAERO 28-GIL,  
GEUMCHEON-GU, SEOUL, KOREA 08651

[www.homakorea.com](http://www.homakorea.com)

 KAI  
CHENG

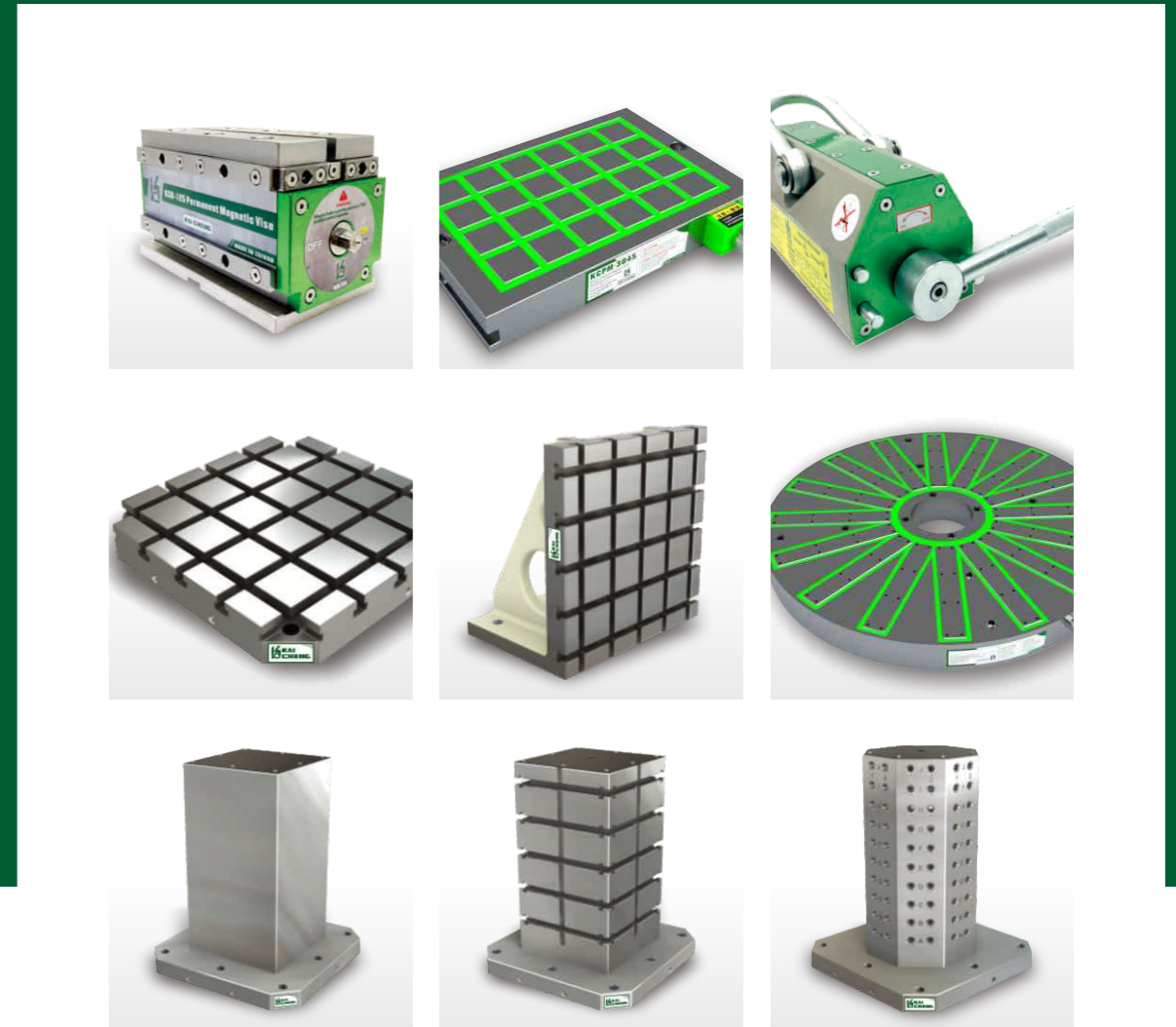
KAI CHENG CO., LTD

Tel: 886-7699-5471 FAX: 886-7699-5308

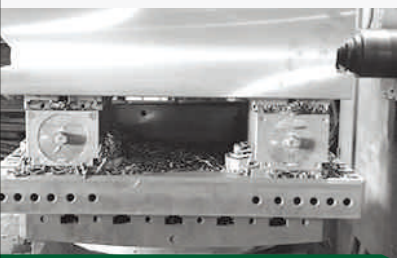
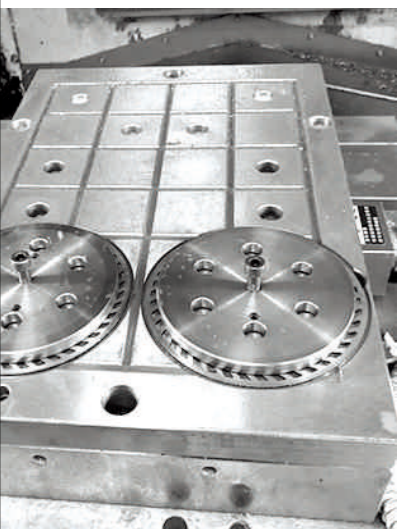
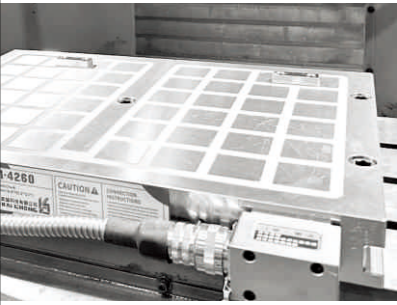
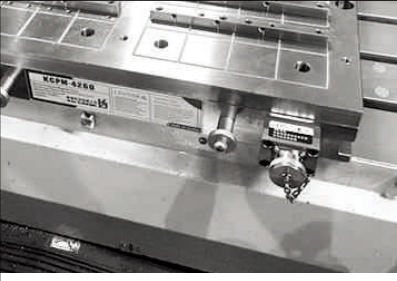
Email: [e935502@ms29.hinet.net](mailto:e935502@ms29.hinet.net)

Address: 1F., NO. 56, LN. 74, ZHONGHUA ST., HUNEI DIST.,  
KAOHSIUNG CITY 82943, TAIWAN

[WWW.KC-KAICHENG.COM](http://WWW.KC-KAICHENG.COM)



- ELECTRO-PERMANENT MAGNETIC CHUCK
- VACUUM CHUCK
- JIGS & TOOLING COLUMNS
- PRECISION FIXTURES
- MACHINE TOOLS



## KAI CHENG Co., Ltd.

We are a professional manufacturer with rich experience in machining mechanical parts ,For example Electro-Permanent Magnetic Chuck, Vacuum Chuck, Jigs and Tooling Columns, precision fixtures for machine tools. Own brand "KAI CHENG", sells products all over the world.

Uphold the philosophy of keeping improving and sustainable operation, providing the best product and service to our customers and pay attention to the accuracy and maintenance of each equipment.

We have several equipment including CNC grinding machines, CNC horizontal machining centers and CNC vertical machining centers.

With diversity equipment, standardized producing process and strict quality management, we provide customers with fastest service in both customized and standard products.



We continue to innovate products, in order to meet the broad demand of the processors.

We develop Electro-Permanent Magnetic Chuck and Tooling Column for horizontal machine and various jigs & fixtures, providing customers with great coordination, high quality, high precision and favorable price in the highly competitive era of Industry 4.0.

# CONTENTS

 **MAGNETIC TOOLS** ..... P.01

 **KCB SERIES** ..... P.20

 **PERMANENT MAGNETIC LIFTER** ..... P.24

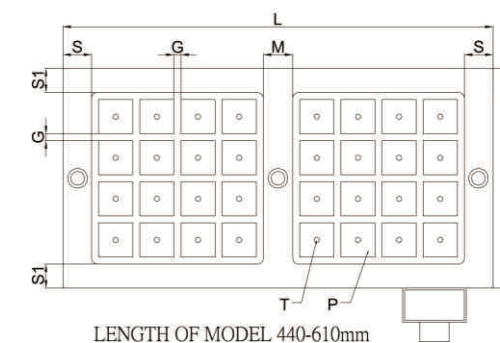
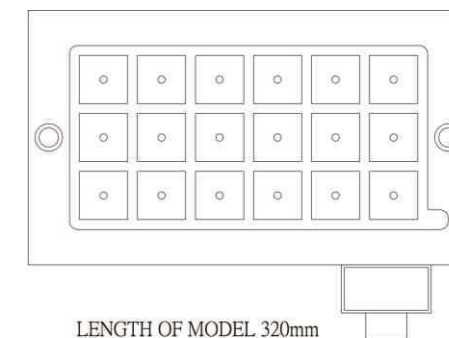
 **VACUUM CHUCK** ..... P.26

 **JIG AND FIXTURE**

DSC01	28	HAP01	40	TPB01	52
DSC02	29	HAP02	41	RS01-02	52
DSC03	30	HAP03	42	NAP01	53
SC01	31	WT01	43	NAP02	53
SC02	32	WT02	44	HCS01-03	54
SC03	33	VBP01	45	SA01-03	55
HCC01	34	VBP02	46	DP01-03	56
HCC02	35	VBP03	47	PP01	57
CC01	36	HBP01	48	TI01	57
CC02	37	HBP02	49	PB01	58
OCC01	38	HBP03	50	PB02	58
OCC02	39	BCSP01-02	51		

# KCPM-A

Pole 35X35 mm, Flux Line 15 mm, Magnetic Force 580±5% kgf/4 Poles



### Applications:

1. Suitable for thin, small and medium workpiece on light duty machining.
2. Suitable for thin, small and medium workpiece of the drilling and finishing machining.
3. Minimum size of workpiece required as 4 alternate magnetic square poles and above contacts is necessary for optimum clamping.
4. More functions for cooperate with Induction Block and Spring Block.

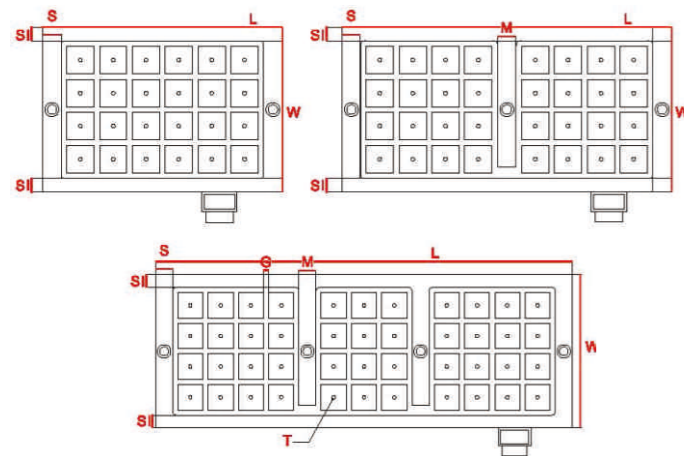
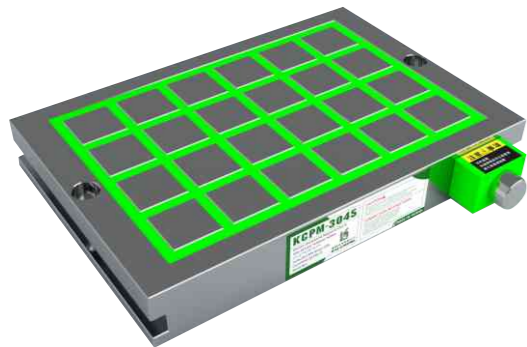
Unit:mm

MODEL NO.	DIMENSION							PITCH G	POLE P	NO. OF POLE	TOTAL HOLDING POWER kgf ±5%
	W	L	S	S1	M	T	H				
KCPM-1832A	185	320	30	30	-	M6	50	7	35×35	18	2610
KCPM-2340A	225	440	30	30	30					32	4640
KCPM-2361A	225	610	30	30	30					48	6960
KCPM-3132A	310	320	30	30	-					36	5220
KCPM-3140A	310	440	30	30	30					48	6960
KCPM-3161A	310	610	30	30	30					72	10440
KCPM-4340A	435	440	30	30	30					72	10440
KCPM-4352A	435	525	30	30	30					90	13050
KCPM-4361A	435	610	30	30	30					108	15660

MODEL NO.	CHUCK KG	VOLTAGE (Single Phase)	CURRENT MP	CONTROLLER (included)
KCPM-1832A	23	CHUCK DC 220V CONTROLLER AC 220V / 480V	18A	T1
KCPM-2340A	39		30A	T1
KCPM-2361A	54		26A	T2
KCPM-3132A	39		26A	T1
KCPM-3140A	53		25A	T2
KCPM-3161A	74		31A	T2
KCPM-4340A	75		31A	T2
KCPM-4352A	90		24A	T4
KCPM-4361A	104		26A	T4

## KCPM-B

Pole 50X50mm, Flux line 25mm



## FEATURES

OF THE ELECTRO-PERMANENT MAGNETIC CHUCK :

- 1 Powerful magnetic force 1300 kgf/110mm<sup>2</sup> ±5%. (4 Poles)
- 2 Electro-permanent magnetic design, 1~2 seconds for power ON & OFF. No need to keep power supply, without temperature rise which is available for long time use. The accuracy will not be affected by the deformation of the workpiece due to the increase in temperature.
- 3 With induction soft block, it is available to do 5 face machining, drilling, tapping, slotting, shaping in one time clamping, saving the machining process which reduces the repetitive tolerance due to the complicate process.
- 4 Shorten the set up time of the workpieces, the clamping area can cover the entire working area. Improve the processing efficiency by multiple workpieces machining at the same time.

## STANDARD SPECIFICATION OF THE ELECTRO-PERMANENT MAGNETIC CHUCK

Unit:mm

MODEL	W	L	S	S1	M	HEIGHT	T	G	NO. OF POLES	TOTAL HOLDING POWER	WEIGHT	VOLTAGE	CURRENT	CONTROLLER
KCPM-2545B	241	439	30	25	-	62	M10	10	18	5600	50	AC 220V	18	T1
KCPM-2560B	241	602	30	25	30				24	7500	63		30	T1
KCPM-2582B	241	828	30	25	30				33	10300	92		30	T1
KCPM-2590B	241	889	30	25	30				36	11200	98		18	T2
KCPM-25100B	241	1009	30	25	30				42	13100	111		26	T2
KCPM-3032B	301	320	30	25	-				16	5000	44		20	T1
KCPM-3045B	301	439	30	25	-				24	7600	64		24	T1
KCPM-3060B	301	604	30	25	30				32	10200	89		33	T1
KCPM-3082B	301	828	30	25	30				44	14000	121		24	T2
KCPM-3090B	301	889	30	25	30				48	15300	130		24	T2
KCPM-30100B	301	1009	30	25	30				56	17900	148		32	T2
KCPM-4245B	421	439	30	25	-				36	11500	90		18	T2
KCPM-4260B	421	604	30	25	30				48	15300	124		24	T2
KCPM-4282B	421	828	30	25	30				66	21100	170		33	T2
KCPM-4290B	421	889	30	25	30				72	23000	182		24	T4
KCPM-42100B	421	1009	30	25	30				84	26800	207		20	T4
KCPM-5060B	481	604	30	25	30				56	17900	141		24	T2
KCPM-5082B	481	828	30	25	30				77	24600	194		24	T4
KCPM-5090B	481	889	30	25	30				84	26800	208		20	T4
KCPM-50100B	481	1009	30	25	30				98	31300	236		24	T4
KCPM-6060B	602	604	30	25	30				72	23000	177		24	T4
KCPM-6082B	602	828	30	25	30				99	31600	243		24	T4
KCPM-6090B	602	889	30	25	30				108	34500	261		33	T4
KCPM-60100B	602	1009	30	25	30				126	40300	296		35	T4

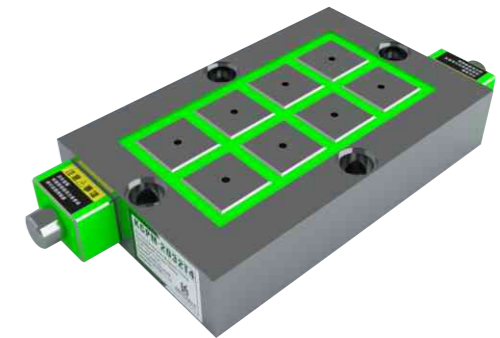
## COMBINATIONAL MAGNETIC CHUCK

### FEATURE :

Save the cost. Optimize the distribution of the magnetic force.

Expansion way, free to arrange the magnetic chuck according to the workpiece, saving the space and reduce the cost.

Available for 5 face machining, drilling. Flexible extension arrangement make machining more convenient and smooth.

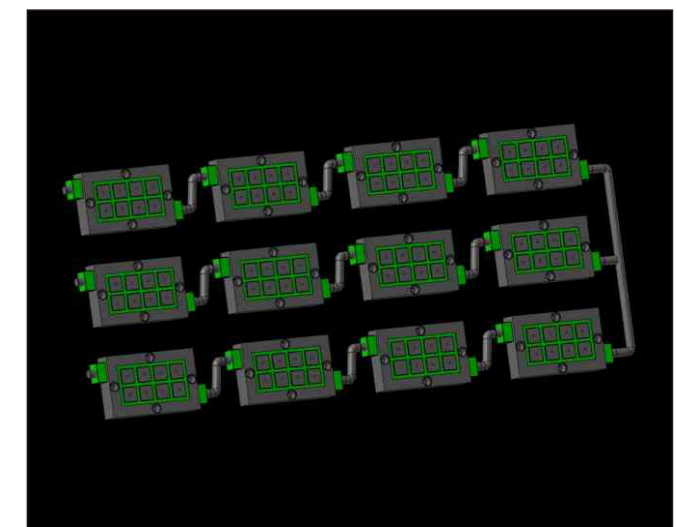
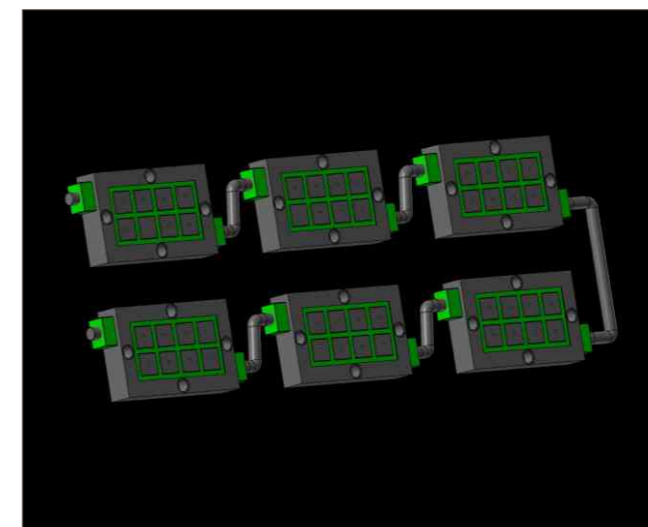


Unit:mm

MODEL	WIDTH	LENGTH	HEIGHT	NO. OF POLES	WEIGHT	VOLTAGE	CURRENT	COMBINED Q'ty	CONTROLLER
MCP-2032	200	321	62	8	31	AC220V	8	4-16	T1-T4
MCP-2626	259	259		9	33		7	4-16	
MCP-2041	200	441		16	121		24	2-8	

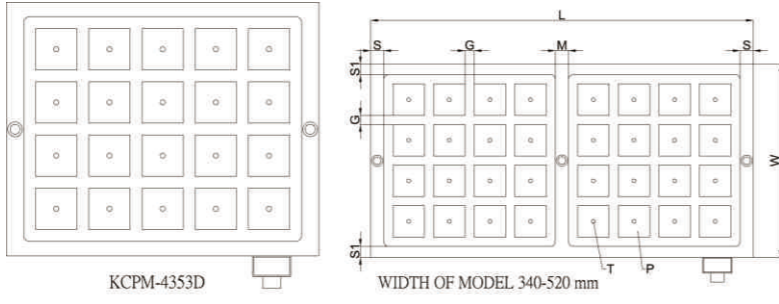
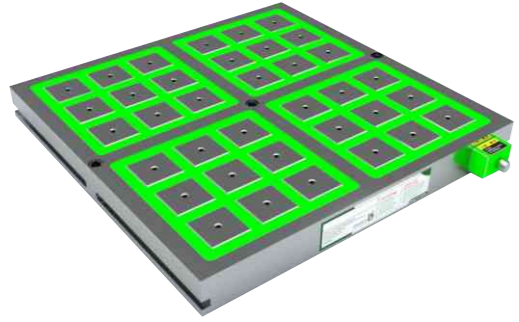
MODEL NO.	CHUCK VOLTAGE (Single Phase)	CONTROLLER VOLTAGE (Single Phase)	DIMENSION							PITCH G	POLE P	NO. OF POLE	HOLDING POWER kgf ±5%	CHUCK KG
			W	L	L1	A	B	H	T					
MCP-2032	DC 220V	AC 220V / 480V	200	321	310	286	166	62	M8	10	50×50	8	2500	31
MCP-2044			200	441	310	406	166	62	M8	10	50×50	12	3750	43
MCP-2056			200	562	310	527	166	62	M8	10	50×50	16	5000	55
MCP-2626			259	259	310	225	225	62	M8	10	50×50	9	2800	33

## APPLICATIONS



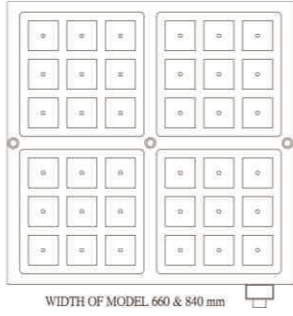
# KCPM-D

Pole 70X70 mm, Flux Line 40 mm, Magnetic Force 2800±5% kgf/4 Poles



**Applications:**

1. Suitable for medium and large workpiece on heavy duty machining.
2. Suitable for medium and double column machining center.
3. Minimum size of workpiece required as 4 alternate magnetic square poles and above contacts is necessary for optimum clamping.
4. With induction soft block, it is available to do 5 face machining, drilling, tapping, slotting, shaping in one time clamping, saving the machining process which reduces the repetitive tolerance due to the complicate process.



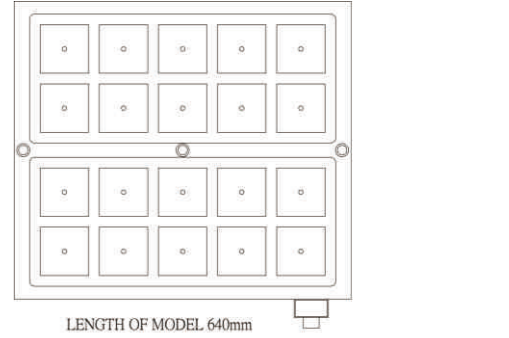
Unit:mm

MODEL NO	DIMENSION							PITCH G	POLE P	NO. OF POLE	TOTAL HOLDING POWER kgf ±5%	CHUCK KG
	W	L	S	S1	M	T	H					
KCPM-3460D	340	670	30	30	30	M10	70	20	70×70	18	12600	126
KCPM-4353D	430	530	30	30	--					20	14000	126
KCPM-4360D	430	670	30	30	30					24	16800	159
KCPM-4385D	430	850	30	30	30					32	22400	202
KCPM-5260D	520	670	30	30	30					30	21000	193
KCPM-5285D	520	850	30	30	30					40	28000	244
KCPM-6060D	660	670	30	30	30					36	25200	245
KCPM-6085D	660	850	30	30	30					48	33600	310
KCPM-8085D	840	850	30	30	30					64	44800	395

MODEL NO	VOLTAGE (Single Phase)	CURRENT AMP	CONTROLLER (included)	VOLTAGE (Single Phase)	CURRENT AMP	CONTROLLER (included)
KCPM-3460D	CHUCK DC 220V CONTROLLER AC 220V / 480V	24A	T2	CHUCK DC 380V CONTROLLER AC 380V / 440V	25A	T1H
KCPM-4353D		13A	T2		22A	T1H
KCPM-4360D		24A	T2		29A	T1H
KCPM-4385D		16A	T4		27A	T2H
KCPM-5260D		19A	T2		17A	T2H
KCPM-5285D		13A	T4		22A	T2H
KCPM-6060D		15A	T4		25A	T2H
KCPM-6085D		24A	T4		29A	T2H
KCPM-8085D		32A	T8		27A	T4H

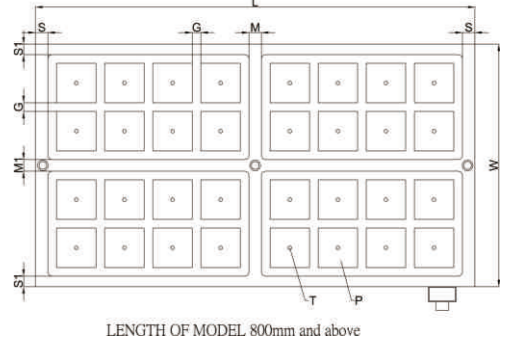
# KCPM-E

Pole 92X92 mm, Flux Line 50 mm, Magnetic Force 4800±5% kgf/4 Poles



**Applications:**

1. Suitable for large and high-thickness workpiece
2. Minimum size of workpiece required as 4 alternate magnetic square poles and above contacts is necessary for optimum clamping.
3. With induction soft block, it is available to do 5 face machining, drilling, tapping, slotting, shaping in one time clamping, saving the machining process which reduces the repetitive tolerance due to the complicate process.



Unit:mm

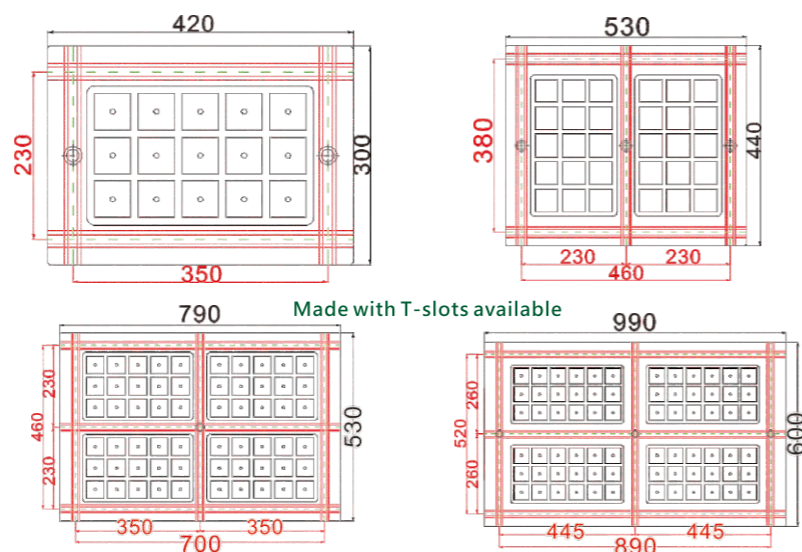
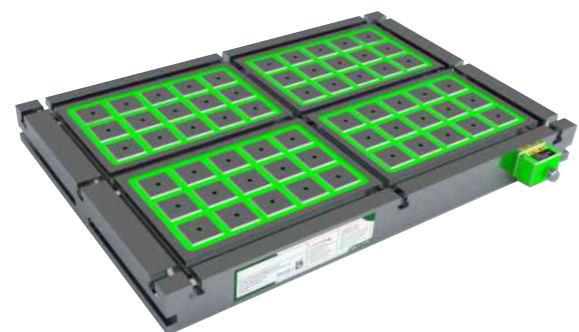
MODEL NO.	DIMENSION							PITCH G	POLE P	
	W	L	S	S1	M	M1	T			H
KCPM-5664E	565	640	30	30	--	27	M10	70	20	92×92
KCPM-56100E	565	1025	30	30	29	27				
KCPM-56125E	565	1250	30	30	30	27				
KCPM-8080E	790	800	30	30	28	28				
KCPM-80100E	790	1025	30	30	29	28				
KCPM-80125E	790	1250	30	30	30	28				

MODEL NO.	NO. OF POLE	TOTAL HOLDING POWER kgf ±5%	CHUCK KG	VOLTAGE (Single Phase)	CURRENT AMP	CONTROLLER (included)
KCPM-5664E	20	24000	214	CHUCK DC 380V CONTROLLER AC 380V / 440V	24A	T2H
KCPM-56100E	32	38400	343		13A	T4H
KCPM-56125E	40	48000	418		24A	T4H
KCPM-8080E	36	43200	374		26A	T4H
KCPM-80100E	48	57600	480		19A	T4H
KCPM-80125E	60	72000	585		15A	T8H

MAGNETIC TOOLS

MAGNETIC TOOLS

## KCPM-KT



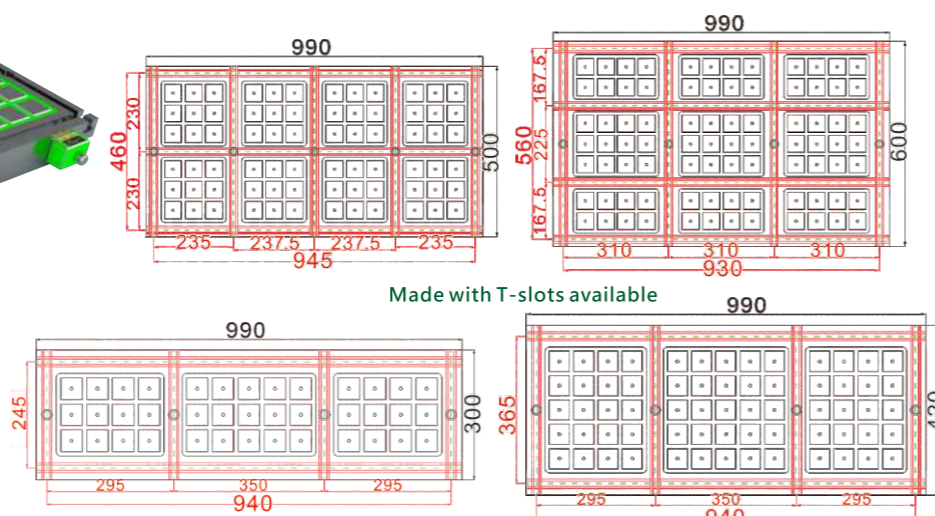
Suitable for big size of workpiece only, use together with mechanical clamping tool for heavy duty machining.

Lower price for big size of workpiece only.

Unit:mm

MODEL NO.	DIMENSION			PITCH	POLE	NO. OF POLE	T-SLOT	TOTAL HOLDING POWER kgf ±5%	CHUCK KG	CHUCK VOLTAGE (Single Phase)	CONTROLLER VOLTAGE (Single Phase)	CURRENT AMP	CONTROLLER (included)	CHUCK VOLTAGE (Single Phase)	CONTROLLER VOLTAGE (Single Phase)	CURRENT AMP	CONTROLLER (included)
	W	L	H														
KCPM-3042KT	300	420	70	10	50x50	15		4600	50	DC 220V	AC 220V / 480V	17A	T1	DC 380V	AC 380V / 440V	17A	T1H
KCPM-4050KT	440	530	70			30		9300	80			33A	T1			33A	T1H
KCPM-5080KT	530	790	70			60		18700	180			32A	T2			32A	T2H
KCPM-60100KT	600	990	70			72		22500	240			23A	T4			23A	T4H

## KCPM-KTL



Suitable for all size of workpiece, can be use together with mechanical clamping tools.

With multi-functions of machine table, clamping plate and magnetic chuck

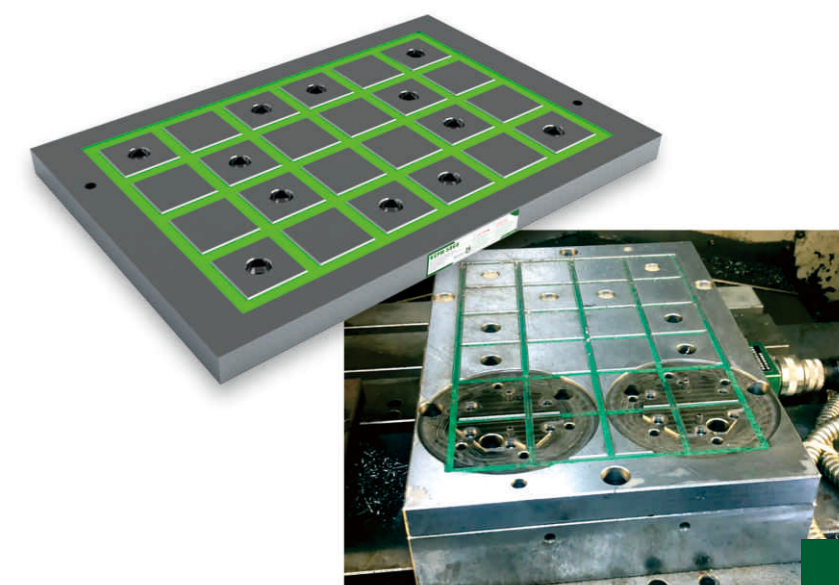
MODEL NO.	DIMENSION			PITCH	POLE	NO. OF POLE	T-SLOT	TOTAL HOLDING POWER kgf ±5%	CHUCK KG	CHUCK VOLTAGE (Single Phase)	CONTROLLER VOLTAGE (Single Phase)	CURRENT AMP	CONTROLLER (included)	CHUCK VOLTAGE (Single Phase)	CONTROLLER VOLTAGE (Single Phase)	CURRENT AMP	CONTROLLER (included)
	W	L	H														
KCPM-30100KTL	300	990	70	10	50x50	39		12100	160	DC 220V	AC 220V / 480V	24A	T2	DC 380V	AC 380V / 440V	16A	T2H
KCPM-40100KTL	420	990	70			65		20300	225			30A	T2			13A	T2H
KCPM-50100KTL	500	990	70			72		22500	260			14A	T4			14A	T2H
KCPM-60100KTL	600	990	70			84		26200	320			22A	T4			9A	T4H

Unit:mm

## INDUCTION PLATE KCPM-IP SERIES

### FEATURE :

1. Suitable for quantity of irregular and smaller workpiece. It can be machining multi-workpiece at same time easily.
2. One KCPM chuck can be use several al Inducion Sub Plate exchangeability for mad machining differrent kind of workpiece.
3. Operation:Set up the Induction Plates to the KCPM chucks first, then machining forms (Around 1-2mm depth) on IP to match the workpiece by the machine directly. Start to clamp workpieces for machining.
4. Please advise the model No. of KCPM chuck which you want to combine for, when purchased.



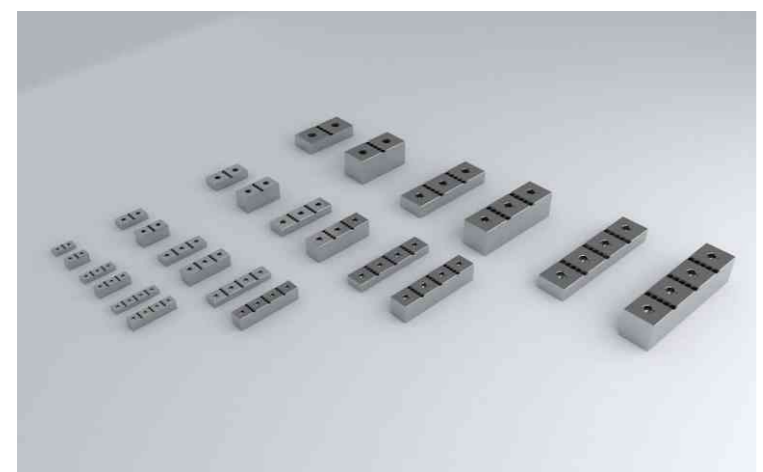
Suitable for quantity of irregular and smaler workpiece. It can be machining multi-workpiece at same time easily

Unit:mm

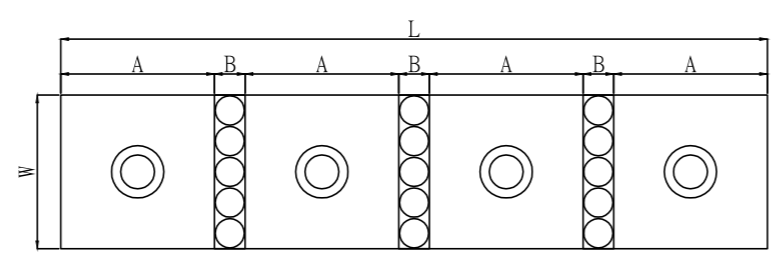
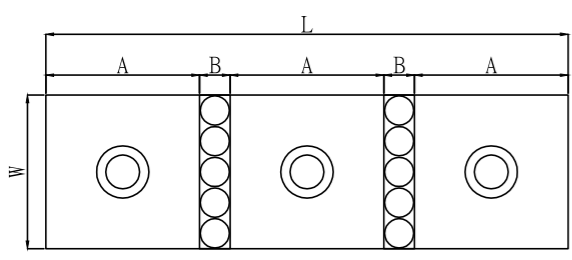
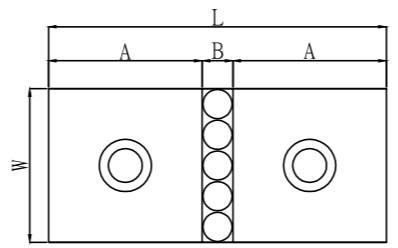
MODEL NO.	W	L	S	S1	M	H	T	G	CHUCK KG
KCPM-2545IP	241	439	30	25	-	25	M10	6/10	21
KCPM-2560IP	241	602	30	25	30				28
KCPM-2582IP	241	828	30	25	30				39
KCPM-2590IP	241	889	30	25	30				42
KCPM-25100IP	241	1009	30	25	30				48
KCPM-3032IP	301	320	30	25	-				19
KCPM-3045IP	301	439	30	25	-				26
KCPM-3060IP	301	604	30	25	30				36
KCPM-3082IP	301	828	30	25	30				49
KCPM-3090IP	301	889	30	25	30				53
KCPM-30100IP	301	1009	30	25	30				60
KCPM-4245IP	421	439	30	25	-				36
KCPM-4260IP	421	604	30	25	30				50
KCPM-4282IP	421	828	30	25	30				68
KCPM-4290IP	421	889	30	25	30				73
KCPM-42100IP	421	1009	30	25	30				83
KCPM-5060IP	481	604	30	25	30				57
KCPM-5082IP	481	828	30	25	30				78
KCPM-5090IP	481	889	30	25	30				84
KCPM-50100IP	481	1009	30	25	30				95
KCPM-6060IP	602	604	30	25	30				71
KCPM-6082IP	602	828	30	25	30				98
KCPM-6090IP	602	889	30	25	30				105
KCPM-60100IP	602	1009	30	25	30				119

# OPTION ACCESSORIES

## INDUCTION BLOCK KCPM-DBA/TBA/QBA SERIES



**Features:**  
1. Suitable for use on KCPM Series of Electro-Permanent Magnetic Chuck.



KCPM-DBA/TBA/QBA Suitable for use on KCPM-A Series Chucks.  
Unit:mm

MODEL NO.	NO.OF POLE	W	L	HEIGHT	A	B
KCPM-DBA	2	35	77	15or30	35	7
KCPM-TBA	3		119			
KCPM-QBA	4		161			

KCPM-DBB/TBB/QBB Suitable for use on KCPM-B Series Chucks.  
Unit:mm

MODEL NO.	NO.OF POLE	W	L	HEIGHT	A	B
KCPM-DBB	2	50	110	25or50	50	10
KCPM-TBB	3		170			
KCPM-QBB	4		230			

KCPM-DBD/TBD/QBD Suitable for use on KCPM-D Series Chucks.  
Unit:mm

MODEL NO.	NO.OF POLE	W	L	HEIGHT	A	B
KCPM-DBD	2	70	160	25or50	70	20
KCPM-TBD	3		250			
KCPM-QBD	4		340			

KCPM-DBE/TBE/QBE Suitable for use on KCPM-E Series Chucks.  
Unit:mm

MODEL NO.	NO.OF POLE	W	L	HEIGHT	A	B
KCPM-DBE	2	92	204	25or50	92	20
KCPM-TBE	3		316			
KCPM-QBE	4		428			

**V Block :**  
Suitable for clamping the round workpiece, convenient for the machining of round workpieces.

### KCPM-IB90



Unit:mm

MODEL NO.	Height	Width	Length
KCPM-IB90V3	50	110	110
KCPM-IB90V4	50	110	230
KCPM-IB90V6	50	110	350

**Angle Block :**  
Customize according to required angle, convenient to meet different angel demand of machining.

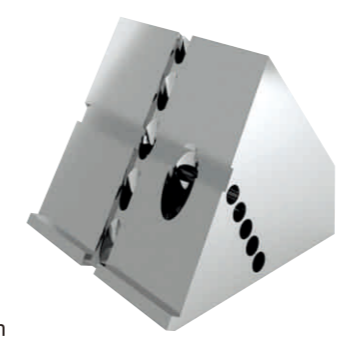
### KCPM-IBT30



Unit:mm

MODEL NO.	Height	Width	Length
KCPM-IBT30V2	60	115	110
KCPM-IBT30V4	60	115	230
KCPM-IBT30V6	60	115	350

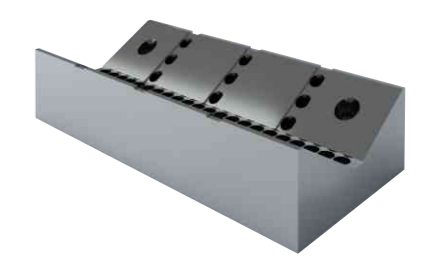
### KCPM-IBT60



Unit:mm

MODEL NO.	Height	Width	Length
KCPM-IBT60V2	100	115	110
KCPM-IBT60V4	100	115	230
KCPM-IBT60V6	100	115	350

### KCPM-IB120



Unit:mm

MODEL NO.	Height	Width	Length
KCPM-IB120V3	50	110	110
KCPM-IB120V4	50	110	230
KCPM-IB120V6	50	110	350

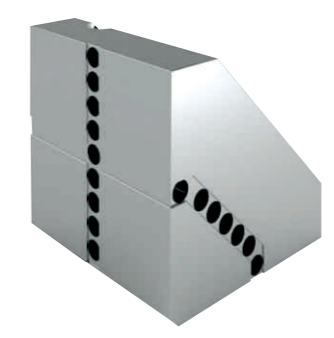
### KCPM-IBT45



Unit:mm

MODEL NO.	Height	Width	Length
KCPM-IBT45V2	83	115	110
KCPM-IBT45V4	83	115	230
KCPM-IBT45V6	83	115	350

### KCPM-IBT90



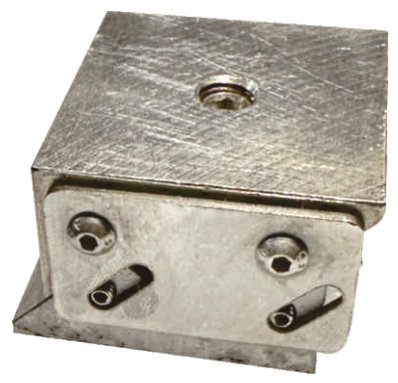
Unit:mm

MODEL NO.	Height	Width	Length
KCPM-IBT90V2	115	115	110
KCPM-IBT90V4	115	115	230
KCPM-IBT90V6	115	115	350

MAGNETIC TOOLS

MAGNETIC TOOLS

## Spring Block KCPM-SP



Suitable for clamping on iron cast, irregular form and flexuous workpieces, it will not be out of shape of the workpiece after machining.

3 Fixed Blocks is necessary for each workpiece clamping. (These are for datum plane, others to be spring blocks). Spring blocks are used to correct irregular or uneven casting, machining the workpiece to redefine the datum plane. For mass production, the efficiency can maximized.

Unit:mm

MODEL NO.	H	W	L	SUITABLE
KCPM-SP35	21	33.6	35	KCPM-A
KCPM-SPF35	23	35	35	
KCPM-SP50	30	48	48	KCPM-B
KCPM-SPF50	32.5	50	50	
KCPM-SP70	30	68	68	KCPM-D
KCPM-SPF70	32.5	70	70	

Unit:mm

MODEL NO.	Holding Power (Kgf)
Fixed Block	85%
Spring Block	40%

## Induction block with raise pin structure KCPM-S50T

### FEATURE :

1. Since the high-carbon materials, the workpiece might be unable to be instantly released after machining cycle is completed due to residual magnetism.
2. The high-carbon steel parts are difficult to remove after the magnetization using induction block with raise pin structure can easily remove the workpiece.



## KCPM-CIRMA-A



### Features:

1. Electro-permanent magnetic design, 1~10 seconds for power ON & OFF. No need to keep power supply, without temperature rise which is available for long time use. The accuracy will not be affected by the deformation of the workpiece due to the increase in temperature.
2. With induction soft block, it is available to do 5 face machining, drilling, tapping, slotting, shaping in one time clamping, saving the machining process which reduces the repetitive tolerance due to the complicate process.
3. Shorten the set up time of the workpieces, the clamping area can cover the entire working area. Improve the processing efficiency by multiple workpieces machining at the same time.

### Applications:

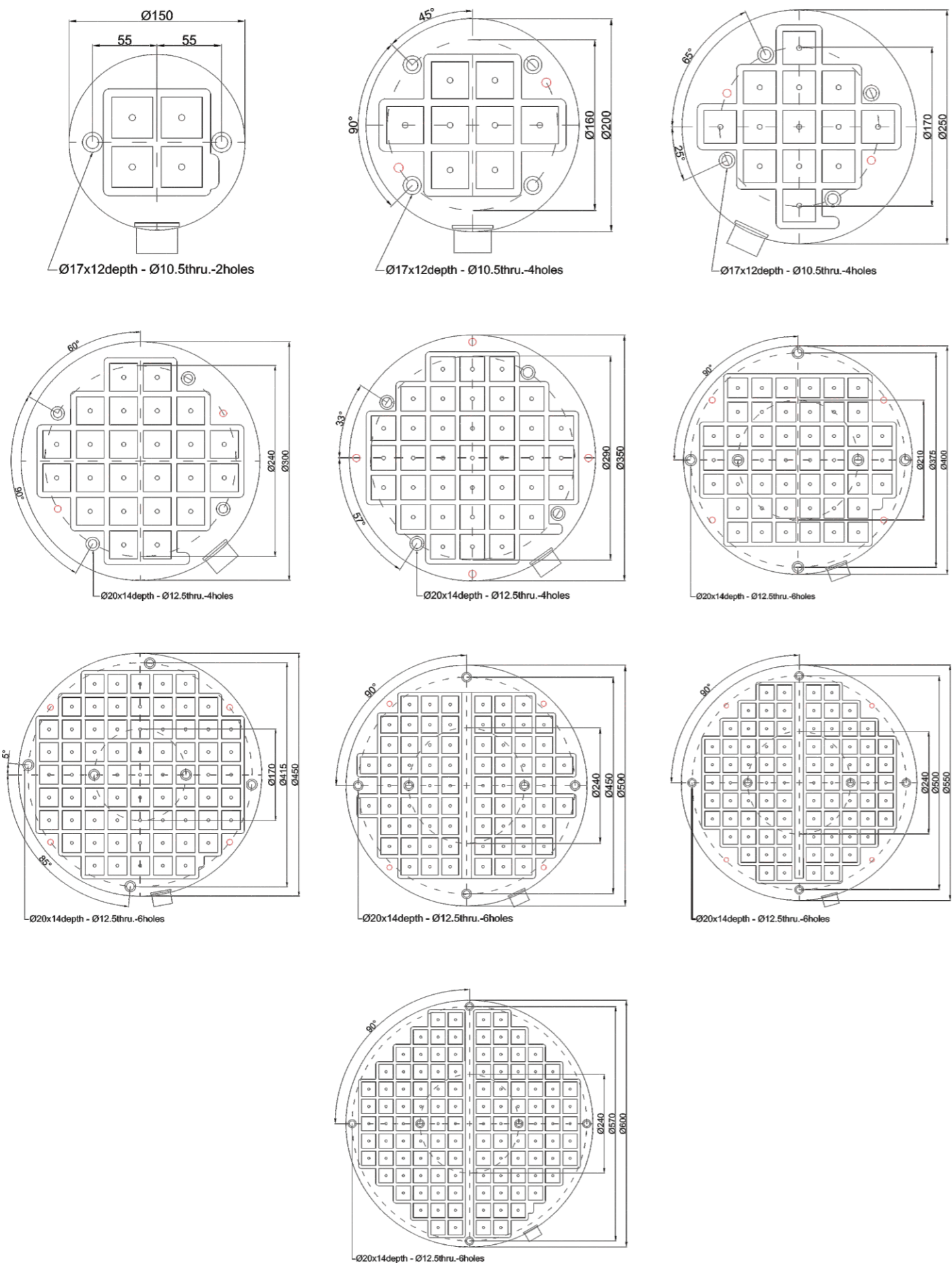
1. KCPM-CIRMA-A: Suitable for thin & small workpiece. (Pole Size 35X35 mm, Magnetic Force 580 kgf/4 Poles).
2. KCPM-CIRMA-B: Suitable for thin & medium workpiece.(Pole Size 50X50 mm, Magnetic Force 1250 kgf/4 Poles).
3. Minimum size of workpiece required as 4 alternate magnetic square poles and above contacts is necessary for optimum clamping.

Unit:mm

MODEL NO.	DIMENSION		PITCH	POLE	NO. OF POLE	CHUCK KG	VOLTAGE (Single Phase)	CURRENT AMP	CONTROLLER (included)
	D	HEIGHT							
KCPM-CIRMA-150A	Ø150	50	7	35x35	4	6	CHUCK DC 220V CONTROLLER AC 220V / 480V	20A	T1
KCPM-CIRMA-200A	Ø200	50			8	11		10A	T1
KCPM-CIRMA-250A	Ø250	50			13	17		25A	T1
KCPM-CIRMA-300A	Ø300	50			24	25		10A	T1
KCPM-CIRMA-350A	Ø350	50			37	34		26A	T1
KCPM-CIRMA-400A	Ø400	50			46	44		14A	T2
KCPM-CIRMA-450A	Ø450	50			67	55		21A	T2
KCPM-CIRMA-500A	Ø500	50			70	69		26A	T2
KCPM-CIRMA-550A	Ø550	50			84	83		15A	T4
KCPM-CIRMA-600A	Ø600	50			114	99		23A	T4



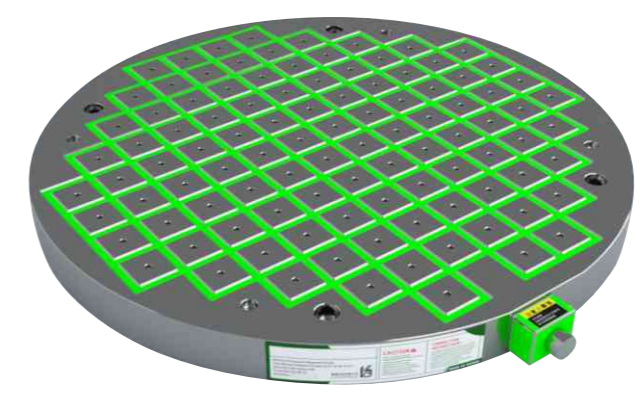
# KCPM-CIRMA-A



MAGNETIC TOOLS

MAGNETIC TOOLS

# KCPM-CIRMA-B



## Features:

1. Electro-permanent magnetic design, 1~10 seconds for power ON & OFF. No need to keep power supply, without temperature rise which is available for long time use. The accuracy will not be affected by the deformation of the workpiece due to the increase in temperature.
2. With induction soft block, it is available to do 5 face machining, drilling, tapping, slotting, shaping in one time clamping, saving the machining process which reduces the repetitive tolerance due to the complicate process.
3. Shorten the set up time of the workpieces, the clamping area can cover the entire working area. Improve the processing efficiency by multiple workpieces machining at the same time.

## Applications:

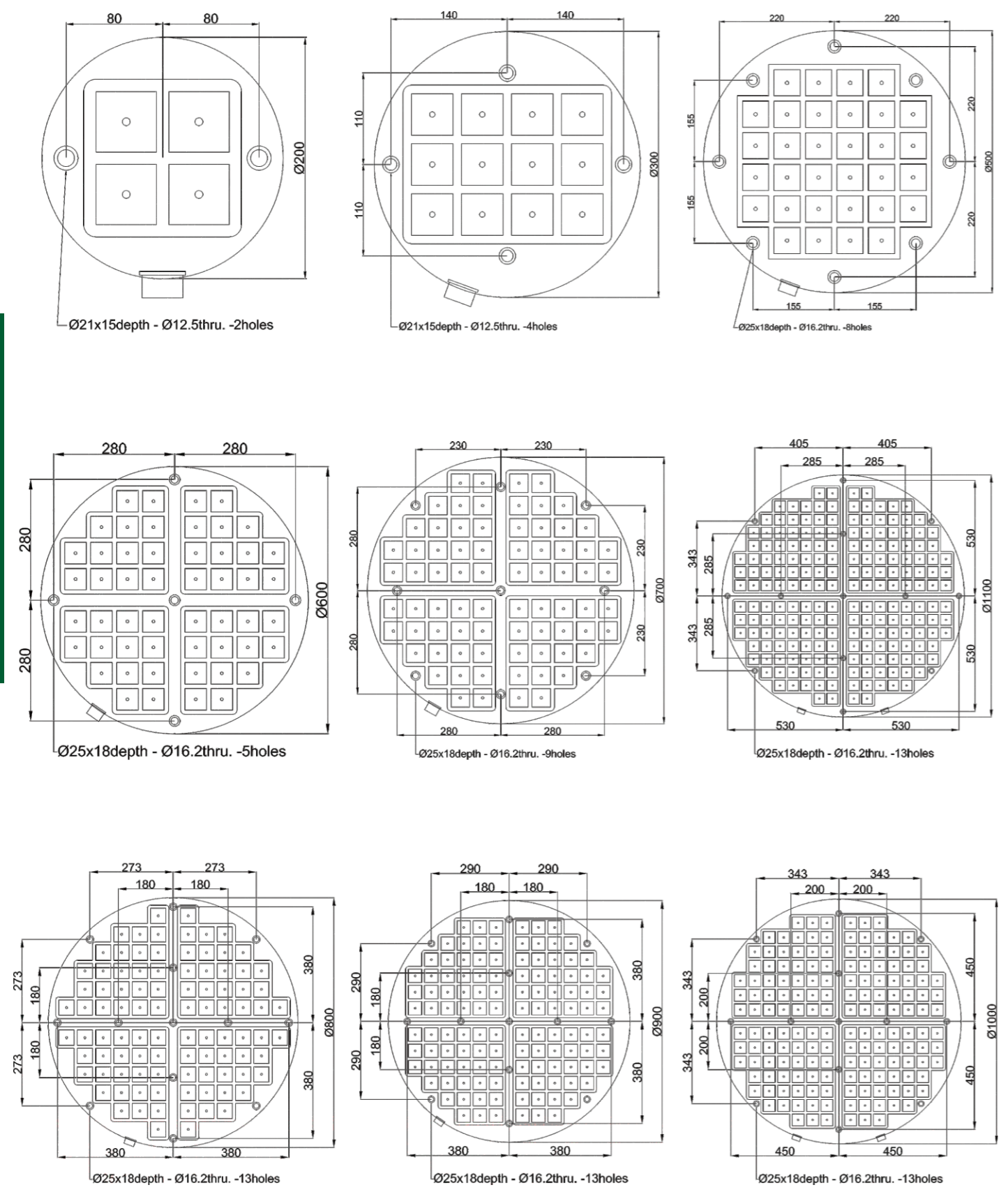
1. KCPM-CIRMA-A: Suitable for thin & small workpiece. (Pole Size 35X35 mm, Magnetic Force 580 kgf/4 Poles).
2. KCPM-CIRMA-B: Suitable for thin & medium workpiece. (Pole Size 50X50 mm, Magnetic Force 1250 kgf/4 Poles).
3. Minimum size of workpiece required as 4 alternate magnetic square poles and above contacts is necessary for optimum clamping.

Unit:mm

MODEL NO.	DIMENSION		PITCH	POLE	NO. OF POLE	CHUCK KG	VOLTAGE (Single Phase)	CURRENT AMP
	D	HEIGHT						
KCPM-CIRMA-200B	Ø203	60	10	50×50	4	16	CHUCK	15A
KCPM-CIRMA-300B	Ø320	60			12	35	DC	20A
KCPM-CIRMA-500B	Ø500	60			32	97	220V	30A
KCPM-CIRMA-600B	Ø620	60			52	150	CONTROLLER	21A
KCPM-CIRMA-700B	Ø720	60			76	191		21A
KCPM-CIRMA-800B	Ø820	60			96	262	AC	23A
KCPM-CIRMA-900B	Ø900	70			120	362	220V	33A
KCPM-CIRMA-1000B	Ø1020	70			164	464	/	29A
KCPM-CIRMA-1100B	Ø1106	70			204	546	480V	28A

MODEL NO.	CONTROLLER (included)	VOLTAGE (Single Phase)	CURRENT AMP	CONTROLLER (included)
KCPM-CIRMA-200B	T1	CHUCK	-	-
KCPM-CIRMA-300B	T1		5A	T1
KCPM-CIRMA-500B	T1	DC	15A	T1
KCPM-CIRMA-600B	T2		380V	22A
KCPM-CIRMA-700B	T4	CONTROLLER	10A	T4
KCPM-CIRMA-800B	T4		AC	9A
KCPM-CIRMA-900B	T4	380V	18A	T4
KCPM-CIRMA-1000B	T8		/	27A
KCPM-CIRMA-1100B	T8	440V	11A	T8

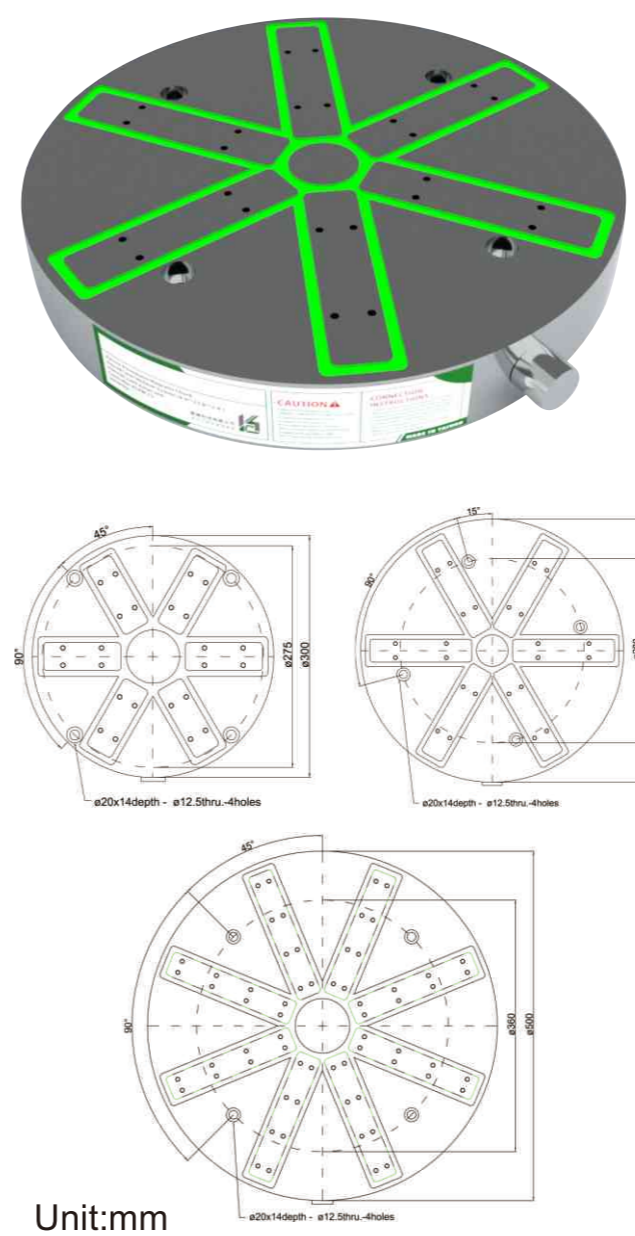
# KCPM-CIRMA-B



MAGNETIC TOOLS

MAGNETIC TOOLS

# KCPM-CIRRA-A



### Features:

1. Round type and radiate magnetic poles, suitable for clamping round type and any form of workpiece machining.
2. Workpieces can be touch to all poles of Magnetic Chuck, super power magnetic force as minimum of 1600Kgf (1.6tons)  $\pm 5\%$  and maximum of 4400Kgf (4.4 tons)  $\pm 5\%$ , it depends on size of workpiece and magnetic chuck.
3. Electro-permanent magnetic design, 1~10 seconds for power ON & OFF. No need to keep power supply, without temperature rise which is available for long time use. The accuracy will not be affected by the deformation of the workpiece due to the increase in temperature.
4. Un-obstructed movement of cutters during machining, the really functions of 5 side machining on workholding.
5. Shorten the set up time of the workpieces, the clamping area can cover the entire working area. Improve the processing efficiency by multiple workpieces machining at the same time

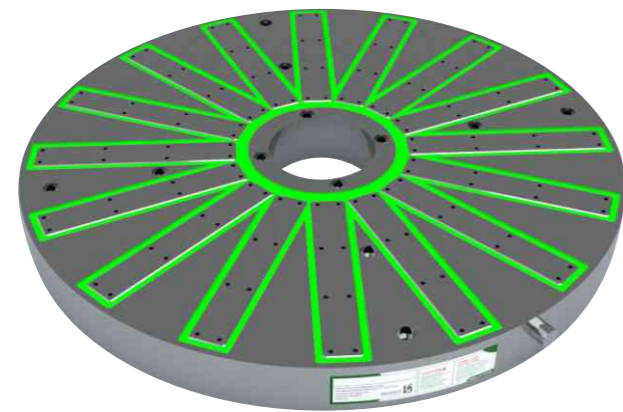
### Applications:

1. suitable in use for combine with Vertical Lathe, CNC 5 Axis Index Device, CNC 5 Axis Machining Center
2. Minimum dimension of workpiece required as:  
 KCPM-CIRRA-A300-@ 300mm  
 KCPM-CIRRA-A400-@360mm;  
 KCPM-CIRRA-A500-@500mm  
 or same dimensions of any other forms of workpiece.
3. More functions for cooperate with induction plate, can do positioning on workholding.

Unit:mm

MODEL NO.	DIMENSION			NO. OF POLE	MAGNETIC FORCE	CHUCK KG	VOLTAGE (Single Phase)	CURRENT AMP	CONTROLLER (included)
	OD	ID	HEIGHT						
KCPM-CIRRA-300A	Ø300	0	55	6	1600kgf $\pm 5\%$	16	CHUCK DC 220V CONTROLLER AC 220V / 480V	7A	T1
KCPM-CIRRA-400A	Ø400	0	55	6	2480kgf $\pm 5\%$	35		18A	T1
KCPM-CIRRA-500A	Ø500	0	55	8	4400kgf $\pm 5\%$	97		22A	T1

# KCPM-CIRRA-B



### Features:

1. Round type and radiate magnetic poles, suitable for clamping round type and any form of workpiece machining.
2. Workpieces can be touch to all poles of Magnetic Chuck, super power magnetic force as minimum of 6650Kgf (6.65tons) ±5% and maximum of 59850Kgf (59.85 tons)±5%, it depends on size of workpiece and magnetic chuck.
3. Electro-permanent magnetic design, 1~10 seconds for power ON & OFF. No need to keep power supply, without temperature rise which is available for long time use. The accuracy will not be affected by the deformation of the workpiece due to the increase in temperature.
4. Un-obstructed movement of cutters during machining, the really functions of 5 side machining on workholding.
5. Shorten the set up time of the workpieces, the clamping area can cover the entire working area. Improve the processing efficiency by multiple workpieces machining at the same time

### Applications:

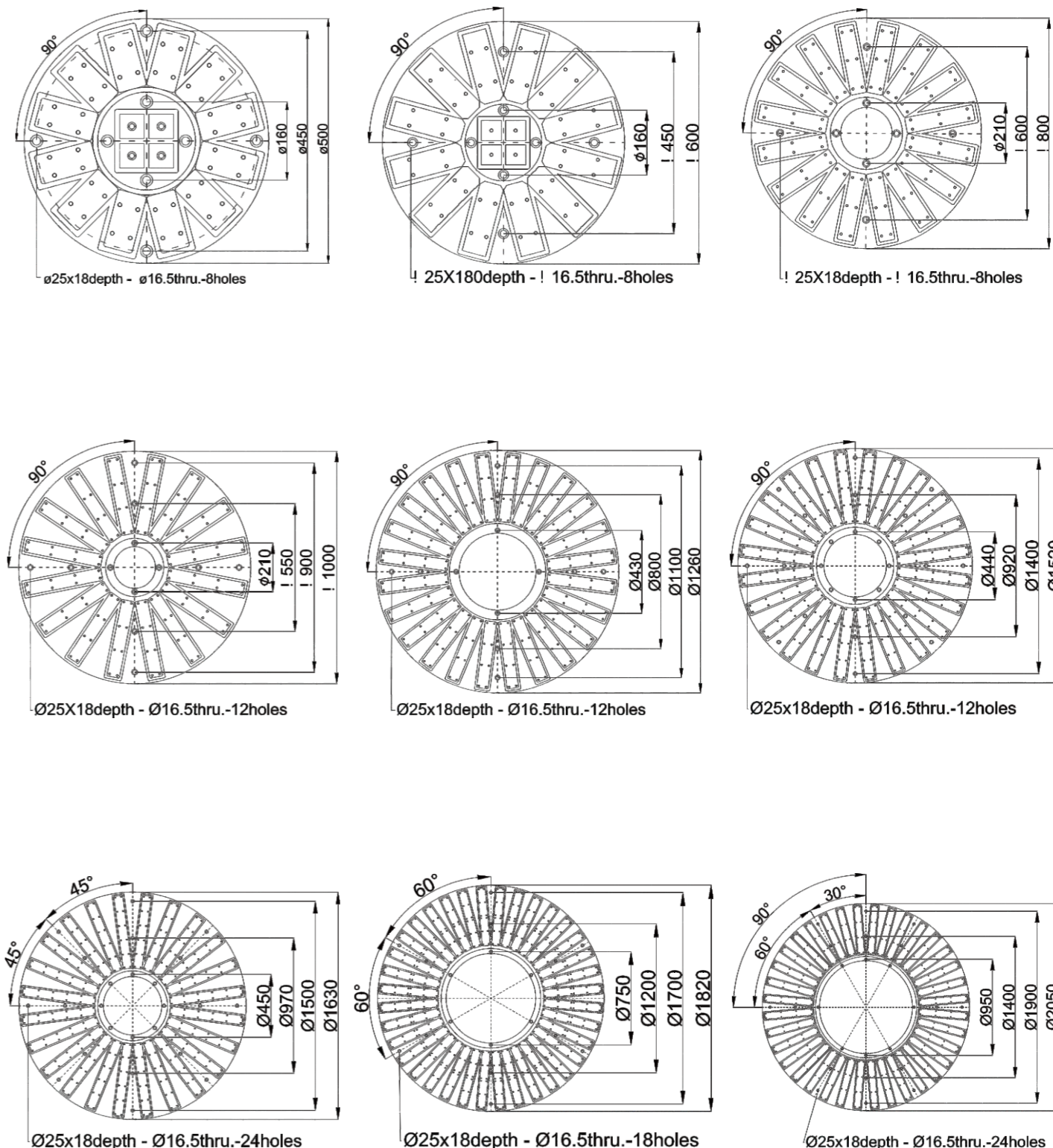
1. suitable in use for combine with Vertical Lathe, CNC 5 Axis Index Device, CNC 5 Axis Machining Center
2. More functions for cooperate with induction plate, can do positioning on workholding.

Unit:mm

MODEL NO.	DIMENSION			NO. OF POLE	MAGNETIC FORCE	CHUCK KG	VOLTAGE (Single Phase)	CURRENT AMP
	OD	ID	HEIGHT					
KCPM-CIRRA-500B	Ø500	0	70	12/4	6650kgf±5%	104	CHUCK DC 220V CONTROLLER AC 220V / 480V	35A
KCPM-CIRRA-600B	Ø600	0	70	12/4	9500kgf±5%	148		23A
KCPM-CIRRA-800B	Ø800	Ø250	85	16	15200kgf±5%	302		30A
KCPM-CIRRA-1000B	Ø1000	Ø250	85	16	19000kgf±5%	471		24A
KCPM-CIRRA-1250B	Ø1250	Ø500	90	24	28500kgf±5%	828		33A
KCPM-CIRRA-1500B	Ø1500	Ø500	100	24	39900kgf±5%	1325		24A
KCPM-CIRRA-1600B	Ø1600	Ø500	100	24	45600kgf±5%	1507		24A
KCPM-CIRRA-1800B	Ø1800	Ø800	100	36	59850kgf±5%	2290		33A
KCPM-CIRRA-2000B	Ø2000	Ø1000	110	36	59850kgf±5%	2490		33A

MODEL NO.	CONTROLLER (included)	VOLTAGE (Single Phase)	CURRENT AMP	CONTROLLER (included)
KCPM-CIRRA-500B	T1	CHUCK DC 380V CONTROLLER AC 380V / 440V	15A	T1
KCPM-CIRRA-600B	T2		15A	T2
KCPM-CIRRA-800B	T2		28A	T2
KCPM-CIRRA-1000B	T4		20A	T4
KCPM-CIRRA-1250B	T4		18A	T4
KCPM-CIRRA-1500B	T8		25A	T8
KCPM-CIRRA-1600B	T8		20A	T8
KCPM-CIRRA-1800B	T8		28A	T8
KCPM-CIRRA-2000B	T8		28A	T8

# KCPM-CIRRA-B



## Option Accessories-Induction Block



### Features:

1. Induction Block KCPM-CIRRA series are use with KCPM-CIRRA chucks, can be increased to more functions on workholding.

2. Convenience and Accuracy: Induction Block are interchanging & consuming accessories, you can machining surface or forming induction blocks for the workpiece required by the machine directly, so the parallelism of induction block will always 100% match to the machine.

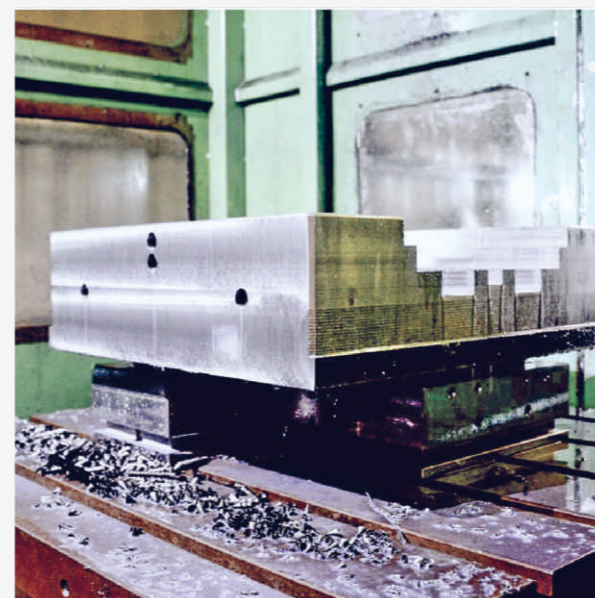
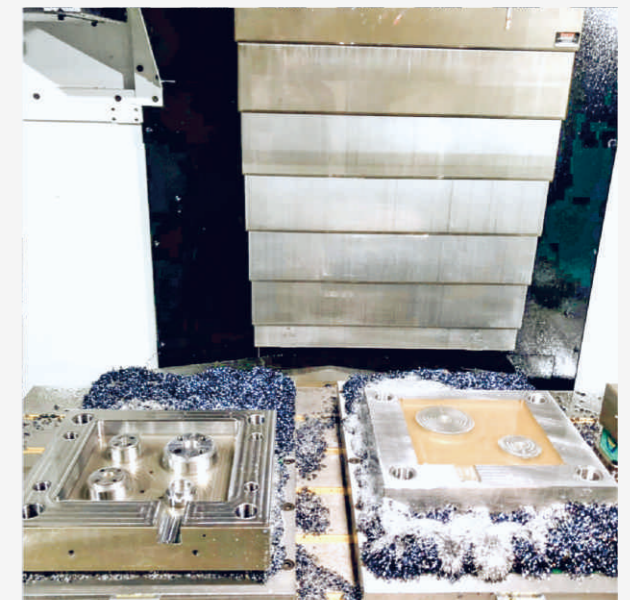
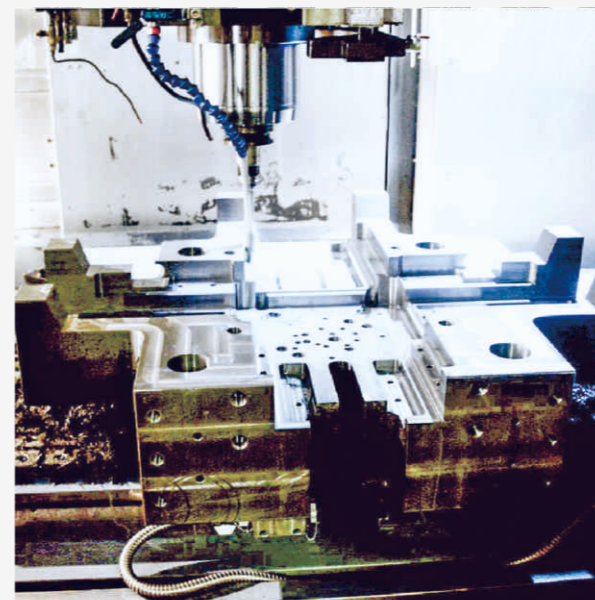
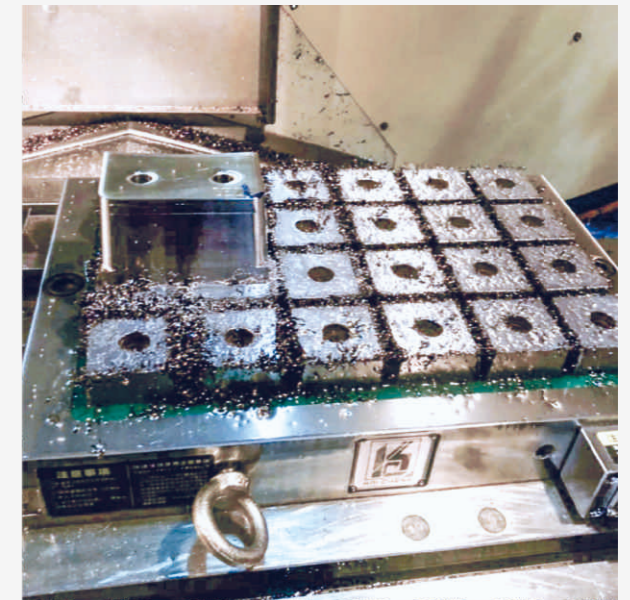
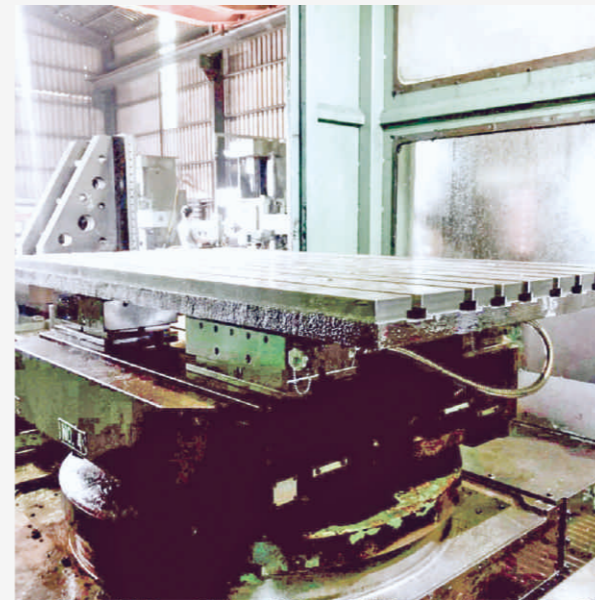
Unit:mm

MODEL	MODEL	LENGTH	WIDTH	HEIGHT
KCPM-CIRRA-300A	KCPM-CIRRA-300IT/IS	96	35	15
KCPM-CIRRA-400A	KCPM-CIRRA-400IT/IS	155	35	
KCPM-CIRRA-500A	KCPM-CIRRA-500IT/IS	190	35	
KCPM-CIRRA-500B	KCPM-CIRRA-500IT/IS	120	60	20
KCPM-CIRRA-600B	KCPM-CIRRA-600IT/IS	180	60	
KCPM-CIRRA-800B	KCPM-CIRRA-800IT/IS	240	55	

Unit:mm

MODEL	MODEL	LENGTH	WIDTH	HEIGHT
KCPM-CIRRA-1000B	KCPM-CIRRA-1000IT/IS	335	55	20
KCPM-CIRRA-1250B	KCPM-CIRRA-1250IT/IS	350	60	
KCPM-CIRRA-1500B	KCPM-CIRRA-1500IT/IS	465	65	
KCPM-CIRRA-1600B	KCPM-CIRRA-1600IT/IS	525	65	
KCPM-CIRRA-1800B	KCPM-CIRRA-1800IT/IS	465	65	
KCPM-CIRRA-2000B	KCPM-CIRRA-2000IT/IS	475	65	

## Applications



## APPLICATION EXPERT OF MAGNETIC TOOLS



# KCB SERIES

Magnetic Fixture System  
Permanent Magnetic Clamping Block

01

5-FACE MACHINING

02

Magnetic Force Enhancement

03

Efficiency Improvement

## FEATURES :

**1** All new series "Permanent Magnetic Clamping Block" KCB SERIES are a new concept of clamping method. Suitable for vertical, horizontal and bridge type CNC machining center in quick workpiece clamping.

5 face machining, drilling, tapping, grooving in one time clamping, saving the machining process which reduces the repetitive tolerance due to the complicate process and enhance the working efficiency and lower the machining cost.

**2** Free to set up the position, numbers and distance of the Magnetic Clamping Block according to the dimension of the workpiece.

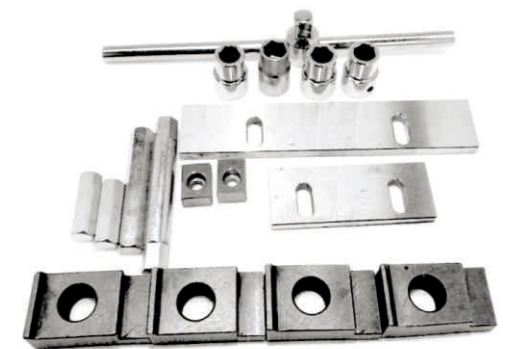
**3** The KCB series including changeable "Induction Soft Block", which is available to be revised on the machine before clamping the workpiece to make sure it fits the machine.

It is also available to be directly drilling, tapping or slotting during milling the workpiece. There are many different function of the "Induction Soft Block", the user can make it by themselves according to different workpiece requirements.



## STANDARD ACCESSORIES :

- Handle ----- 1 set
- Induction soft block ---- 1 set
- Stopping plate ----- 1 set
- Guide key ----- 2 pcs
- Switch connector ----- 1 set



## APPLICATION :

**1** Suitable for machining medium and large size of workpiece.

**2** Changeable induction soft block is available to do multi-function workpiece clamping.

**3** The minimum workpiece requirement is greater than the area of two Magnetic Clamping Blocks.

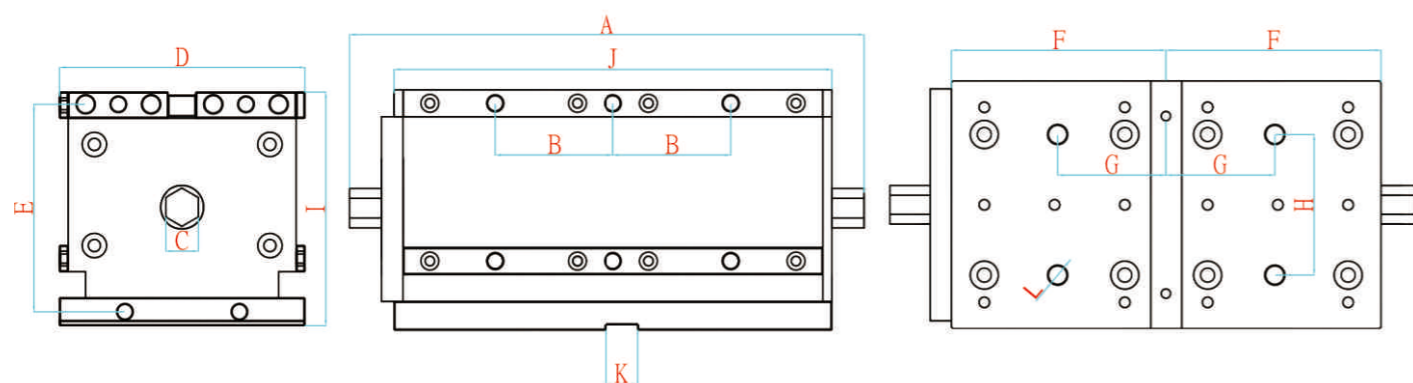
**4** The Magnetic Clamping Blocks are not suitable for clamping the small workpiece.

# Note :

**1** Please always make sure the Switch is in ON position before machining.

**2** The principle of Magnetic Clamping Blocks is magnetism of N.S. poles, please always put the workpiece in the middle of the clamping area. The workpiece is not available to be clamped if it is placed on one side.

**3** The Magnetic Clamping Blocks are not suitable for small workpiece or non-magnetic material, such as brass, copper, aluminum and stainless steel...etc. The minimum workpiece requirement is greater than the area of two Magnetic Clamping Blocks.



Unit:mm

MODEL	HOLDING POWER	MINIMUM THICKNESS OF WORKPIECE REQUIRED	A	J	C	D	E	G	H	B
KCB-325	3250kgf±5%	40	315	290	19	198	172	70	107	80
KCB-215	2150kgf±5%	30	270	245	19	141	126	62	80	66
KCB-125	1300kgf±5%	20	225	200	13	110	94.5	47.5	48.5	45
KCB-075	750kgf±5%	15	210	185	13	80	67	46.5	33	41
KCB-055	500kgf±5%	15	165	140	13	80	67	32	33	30

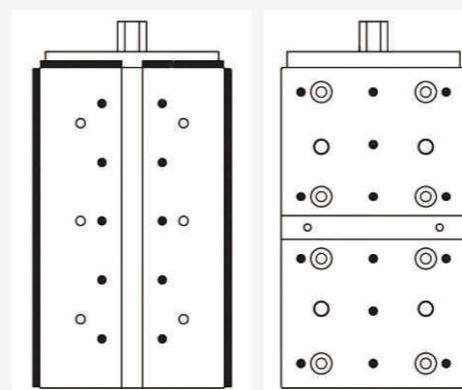
Unit:mm

MODEL	L	K	F	F=+0-0.03	I	I=+0-0.03	N.W.	MINIMUM THICKNESS REQUIRED
KCB-325	M12	18	150	Fixed size is customized.	188	Fixed size is customized.	73kg	40
KCB-215	M12	18	122.5		134		36kg	30
KCB-125	M10	18	100		108		18kg	20
KCB-075	M8	18	92.5		78		9.5kg	15
KCB-055	M8	18	70		78		7kg	15

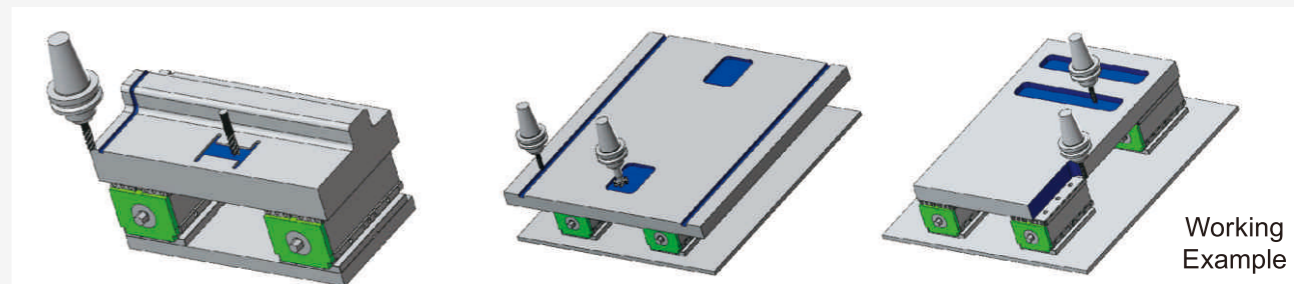
Customer can make the switch connector by hexagon steel bar according to the length required.

The dimension of hexagon steel bar required :

- KCB-215,325 ----- 19mm
- KCB-125,075,055 ----- 13mm



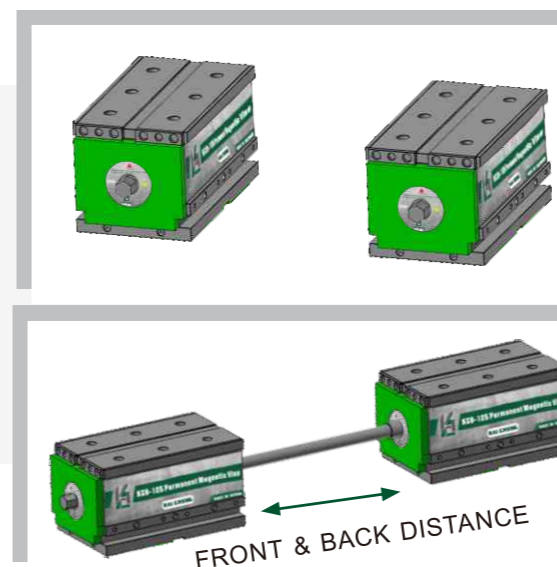
◀ The points are hardened up to HRC55 to keep the basic surface in precision.



## Maximum & Minimum distance required :

MODEL		KBC-325	KBC-215	KBC-125	KBC-075	KBC-055
SIDE DISTANCE	Min.	100	100	60	25	25
	Max.	1000	1000	600	400	400
FRONT & BACK DISTANCE	Min.	70	70	40	40	40
	Max.	600	500	300	200	200

Unit:mm



## Induction Soft Block :

Customer can make special induction block by themselves according to the workpiece and application required. (Magnetically permeable material required)

# SWITCHING PERMANENT MAGNETIC LIFTER

# KCMC SERIES

More power with favorable price.  
Easy to use!

**Safety  
Factor  
3.5times**



**compact dimension**

**light weight**

**favorable price**

PERMANENT MAGNETIC LIFTER

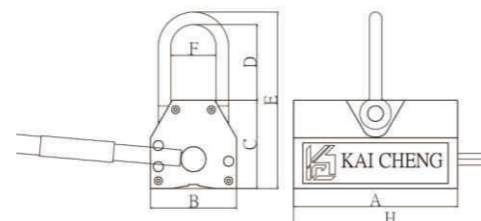
## FEATURES :

Manufactured with the latest technology of NdFeB magnet. All new series with "compact dimension", "light weight", "favorable price".

Made by permanent magnet, Made of permanent magnets, never demagnetized, no electricity required, avoiding the danger of power failure and the trouble of connecting wires. Unique V slot design, available for lifting the steel plate and round steel.

3.5 times safety factor with powerful magnetic force provide higher security and greater efficiency.

Unit:mm



MODEL	A		B		C		D		E		F		G		Safety coefficient	Weight	
	mm	inch	mm	inch	mm	inch	mm	inch	mm	inch	mm	inch	mm	inch		Kg	lbs
KCMC-M100	125	3.5	70	2.4	75	3	46	1.8	123	5.1	32	1.3	155	4.6	x3.5	3	6.6
KCMC-M300	160	6.3	90	3.5	93	3.8	50	2	168	6.3	45	1.8	195	7.4		9	19.8
KCMC-M600	210	9.2	110	4.7	113	4.8	80	2.9	226	8.4	58	2.5	255	10.4		23	50.6
KCMC-M1000	265	10.6	145	6.7	138	6.7	100	3.7	270	11.2	71	3.9	305	11.9		54	118.8

This product has been insured with NTD 10 million liability insurance.

## SAFETY FACTOR x 3.5 TIMES :

The capacity of magnet lifter indicated as 1/3.5 of holding power. For example, the capacity of KCMC-M600 is 600 kgs, however the real holding power is 2100 kgf. (Large safety factor, in order to consider and ensure the safety factor of use.)

**Disclaimer :** The following diagram is only for reference. If the steel to be lifted exceeds the above mentioned range, please test and make sure there is not any safety concerns before lifting away. The producer will not be responsible for any dangerous accident occurs.

MODEL	Steel plate-Max. lifting capacity		Min. thickness required		Round steel-Max. lifting capacity		Max. diameter		Maximum length	
	Kg	lbs	mm	inch	Kg	lbs	mm	inch	mm	inch
KCMC-M 100	100	330	15	0.6	50	110	150	5.9	500	19.7
KCMC-M 300	300	660	25	1	150	330	250	9.8	800	31.5
KCMC-M 600	600	1320	30	1.2	300	660	350	13.8	1200	47.2
KCMC-M 1000	1000	2200	40	1.6	500	1100	450	17.7	1500	59

Unit:mm

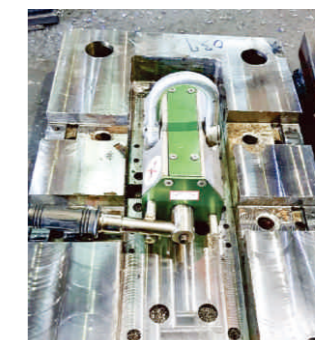
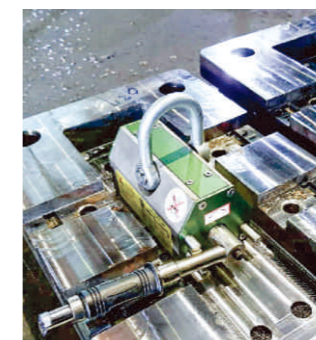
PERMANENT MAGNETIC LIFTER

## APPLICATIONS :

Suitable for moving plate steel, block steel and round steel, such as machine parts, press mold, plastic mold and iron material...etc.

The load of holding power will change due to the following factors: steel thickness, surface roughness, material type and whether the magnet lifter and steel are clean.

### One hand operation which is convenient to use!



# VACUUM CHUCK



- Clamping any non-magnetic materials.
- No sealing strip required.
- Can be used with coolant flushing.
- Can be used with protection board.
- Can be milled and drilled through.

1. Vacuum degree can reach 95 KPA ±5%
2. Design of the vacuum chuck: The vacuum chuck contains vacuum chamber, special flow channel and pressure sensor mechanism. Save the vacuum energy consumption and improve the vacuum suction.
3. Special silicone soft jaws can overcome the easy deformed materials (such as plastic, stainlessness steel), achieving the best vacuum degree.
4. With aluminum soft jaws, fulfilling repeatable grinding and fast positioning, drilling, tapping and milling grooves. Achieve five face machining ability, the processing efficiency is greatly improved.

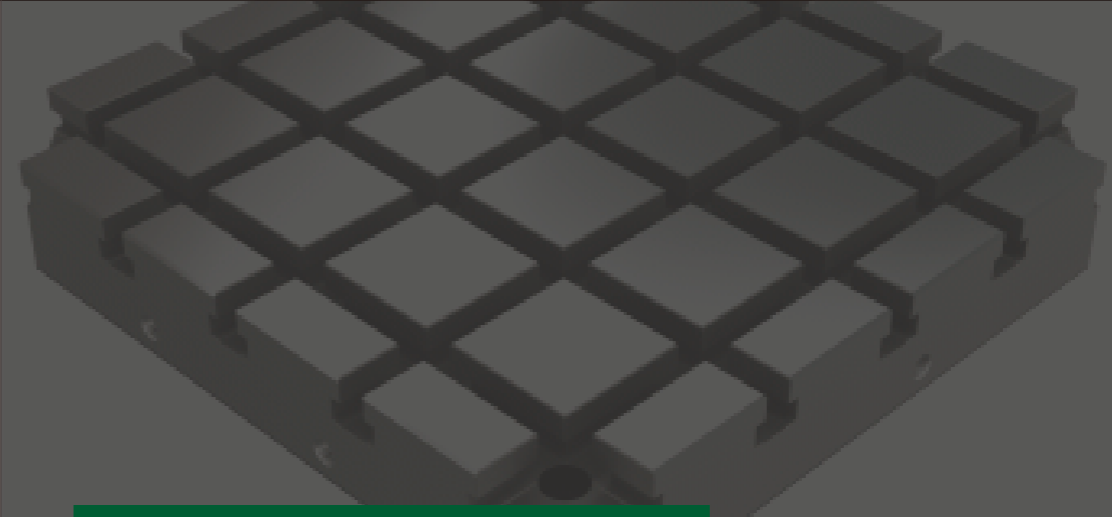
Unit:mm

MODEL NO.	HEIGHT	LENGTH	WIDTH	NUMBER OF VACUUM HOLES	VACUUM FLOW	PRESSURE	WEIGHT KG
VCC-3130	65or75	310	300	156	218L/MIN	300(Kpa)	19
VCC-3140		400	310	234	328L/MIN		22
VCC-3160		600	310	364	510L/MIN		32
VCC-3180		800	310	492	689L/MIN		43
VCC-4140		400	410	342	479L/MIN		29
VCC-4160		600	410	530	742L/MIN		43
VCC-4180		800	410	720	1008L/MIN		57
VCC-5150		500	510	550	770L/MIN		44
VCC-5160		600	510	642	900L/MIN		53
VCC-5180		800	510	872	1221L/MIN		71
VCC-51100		1000	510	1102	1543L/MIN		89
VCC-6160		600	610	810	1134L/MIN		64
VCC-6180		800	610	1100	1540L/MIN		85
VCC-61100		1000	610	1390	1946L/MIN		106

Special design is welcome.

VACUUM CHUCK

JIG AND FIXTURE



## KAI CHENG Co., Ltd.

### APPLICATION EXPERT OF JIG AND FIXTURE

Uphold the philosophy of keeping improving and sustainable operation, providing the best product and service to our customers and pay attention to the accuracy and maintenance of each equipment.

We have several equipment including CNC grinding machines, CNC horizontal machining centers and CNC vertical machining centers.

With diversity equipment, standardized producing process and strict quality management, we provide customers with fastest service in both customized and standard products.

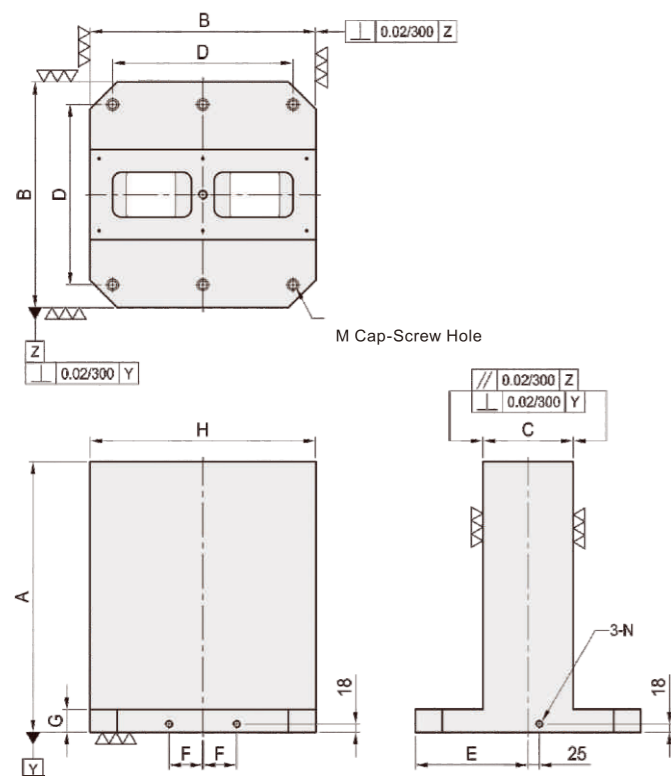
We continue to innovate products, in order to meet the broad demand of the processors. We develop Electro-Permanent Magnetic Chuck and Tooling Column for horizontal machine and various jigs & fixtures, providing customers with great coordination, high quality, high precision and favorable price in the highly competitive era of Industry 4.0.



# DSC01

## DOUBLE SIDED TOOLING COLUMN

- **Material** : FCD55
- **Heat treated** : Normalized
- **Application** : Horizontal Machining Center
- **Features** : Ready to accept a hole pattern for your special jig.



Unit:mm

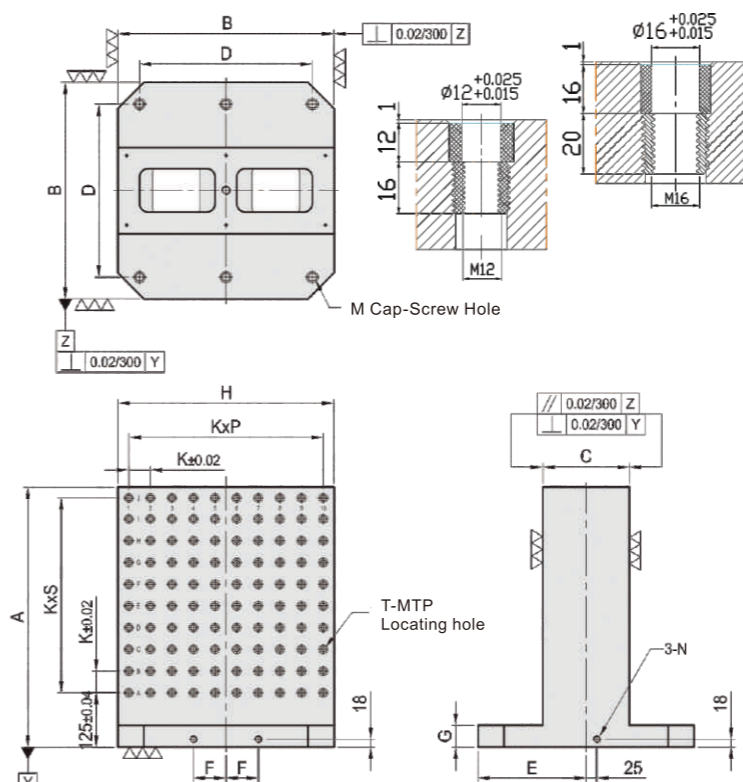
MODEL NO.	A	B	C	D	E	F	G	H	M	N	Mounting holes	Kg
DSC01-300300-0500	500	300	80	250	150	40	50	300	M12	M12	4	115
DSC01-400400-0500	500	400	150	320	200	55	50	400	M16	M16	4	170
DSC01-400400-0650	650											215
DSC01-500500-0600	600	500	200	400	250	75	50	500	M16	M16	6	270
DSC01-500500-0750	750											350
DSC01-630630-0700	700	630	250	500	315	100	50	630	M16	M16	6	445
DSC01-630630-0850	850											520
DSC01-800800-0800	800	800	300	640	400	135	50	800	M16	M16	6	675
DSC01-800800-1000	1000											815
DSC01-10001000-1000	1000	1000	350	800	500	165	55	1000	M20	M16	6	1162
DSC01-10001000-1250	1250											1377

Special design is welcome.

# DSC02

## DOUBLE SIDED TOOLING COLUMN

- **Material** : FCD55
- **Heat treated** : Normalized
- **Application** : Horizontal Machining Center
- **Features** : Alignment bushing & thread insert at every hole location, easily adapts to standardized jig components.



Unit:mm

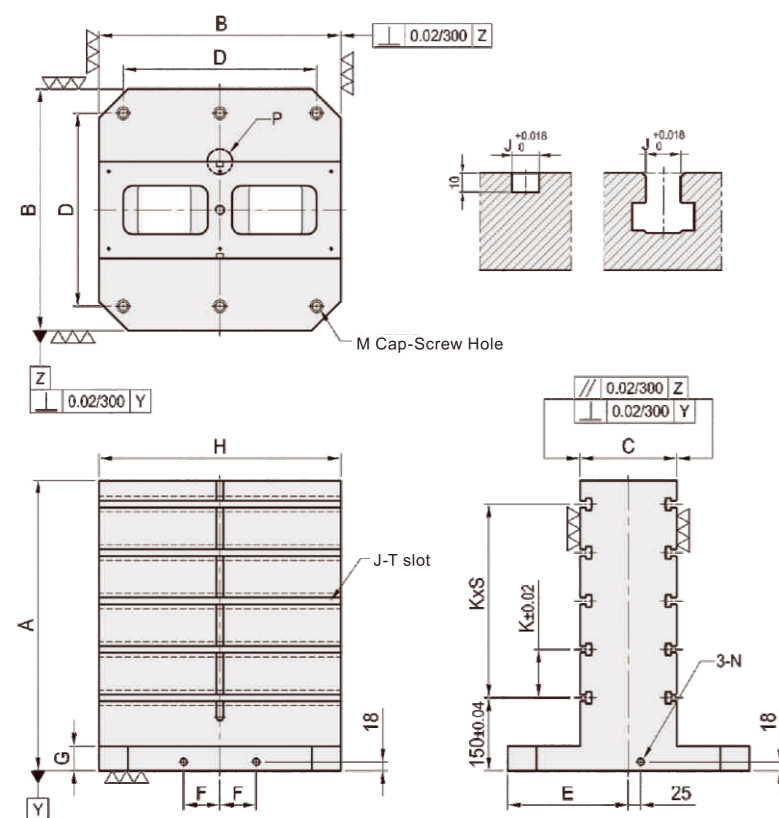
MODEL NO	A	B	C	D	E	F	G	H	K	P	S	T	M	N	MTP	Mounting holes	Kg	
DSC02-300300-0500-12	500	300	80	250	150	40	50	300	5	7	7	$\phi 12$	M16	M12	M12	96	4	110
DSC02-400400-0500-12	500	400	150	320	200	55	50	400	5	7	7	$\phi 12$	M16	M16	M16	128	4	165
DSC02-400400-0650-12	650																	210
DSC02-500500-0600-12	600	500	200	400	250	75	50	500	5	9	9	$\phi 12$	M16	M16	M16	200	6	265
DSC02-500500-0750-12	750																	355
DSC02-630630-0700-12	700	630	250	500	315	100	50	630	5	11	11	$\phi 12$	M16	M16	M16	288	6	435
DSC02-630630-0850-12	850																	515
DSC02-800800-0800-12	800	800	300	640	400	135	50	800	5	13	13	$\phi 12$	M16	M16	M16	420	6	660
DSC02-800800-1000-12	1000																	800
DSC02-10001000-1000-12	1000	1000	350	800	500	165	55	1000	5	17	17	$\phi 12$	M16	M20	M16	684	6	1158
DSC02-10001000-1250-12	1250																	1375

Special design is welcome.

# DSC03

## DOUBLE SIDED TOOLING COLUMN

- **Material** : FCD55
- **Heat treated** : Normalized
- **Application** : Horizontal Machining Center
- **Features** : T-Slots running horizontally, key-way running vertically, easily adapts to standardized jig components.



Unit:mm

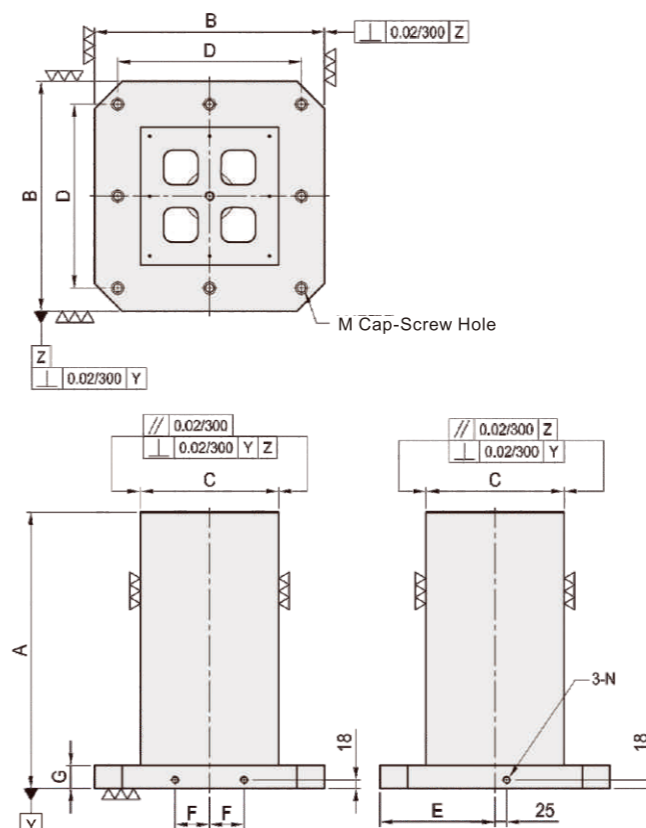
MODEL NO.	A	B	C	D	E	F	G	M	N	H	J	K	S	Moun-ting holes	Kg
DSC03-400400-0500-14	500	400	150	320	200	55	50	M16	M16	400	14	100	3	4	170
DSC03-400400-0650-14	650	400	150	320	200	55	50	M16	M16	400	14	100	4	4	220
DSC03-500500-0600-14	600	500	200	400	250	75	50	M16	M16	500	14	100	4	6	290
DSC03-500500-0750-14	750	500	200	400	250	75	50	M16	M16	500	14	100	5	6	335
DSC03-630630-0700-14	700	630	250	500	315	100	50	M16	M16	630	14	125	4	6	440
DSC03-630630-0850-14	850	630	250	500	315	100	50	M16	M16	630	14	125	5	6	515
DSC03-800800-0800-14	800	800	300	640	400	135	50	M16	M16	800	14	150	4	6	670
DSC03-800800-1000-14	1000	800	300	640	400	135	50	M16	M16	800	14	150	5	6	790
DSC03-10001000-1000-14	1000	1000	350	800	500	165	55	M20	M16	1000	14	160	5	6	1158
DSC03-10001000-1250-14	1250	1000	350	800	500	165	55	M20	M16	1000	14	160	6	6	1375

Special design is welcome.

# SC01

## SQUARE TOOLING COLUMN

- **Material** : FCD55
- **Heat treated** : Normalized
- **Application** : Horizontal Machining Center
- **Features** : Ready to accept a hole pattern for your special jig.



Unit:mm

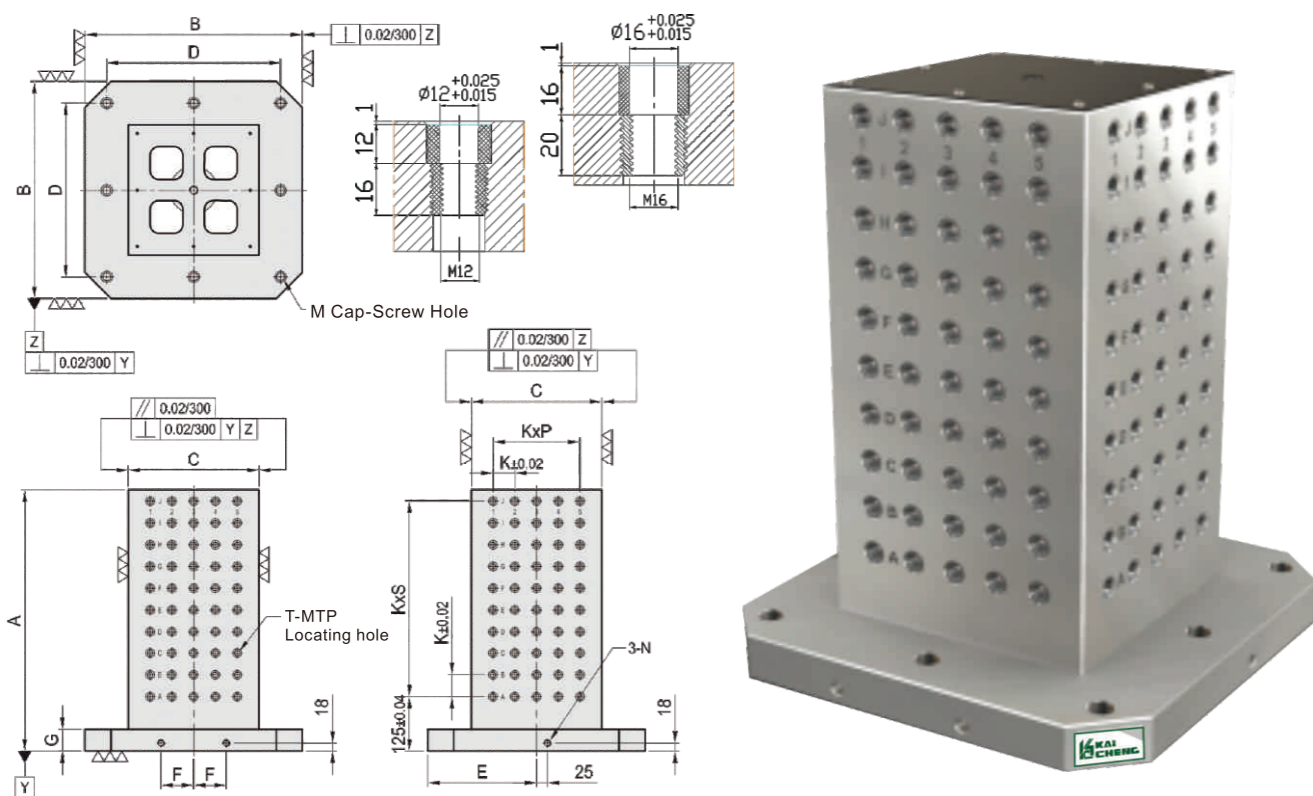
MODEL NO.	A	B	C	D	E	F	G	M	N	Mounting holes	Kg
SC01-300300-0500	500	300	150	250	150	40	50	M12	M12	4	90
SC01-400400-0500	500	400	250	320	200	55	50	M16	M16	4	160
SC01-400400-0650	650	400	250	320	200	55	50	M16	M16	4	210
SC01-500500-0600	600	500	300	400	250	75	50	M16	M16	8	250
SC01-500500-0750	750	500	300	400	250	75	50	M16	M16	8	310
SC01-630630-0700	700	630	350	500	315	100	50	M16	M16	8	400
SC01-630630-0850	850	630	350	500	315	100	50	M16	M16	8	460
SC01-800800-0800	800	800	500	640	400	135	50	M16	M16	8	680
SC01-800800-1000	1000	800	500	640	400	135	50	M16	M16	8	800
SC01-10001000-1000	1000	1000	600	800	500	165	55	M20	M16	8	1164
SC01-10001000-1250	1250	1000	600	800	500	165	55	M20	M16	8	1391

Special design is welcome.

# SC02

## SQUARE TOOLING COLUMN

- **Material** : FCD55
- **Heat treated** : Normalized
- **Application** : Horizontal Machining Center
- **Features** : Alignment bushing & thread insert at every hole location, easily adapts to standardized jig components.



Unit:mm

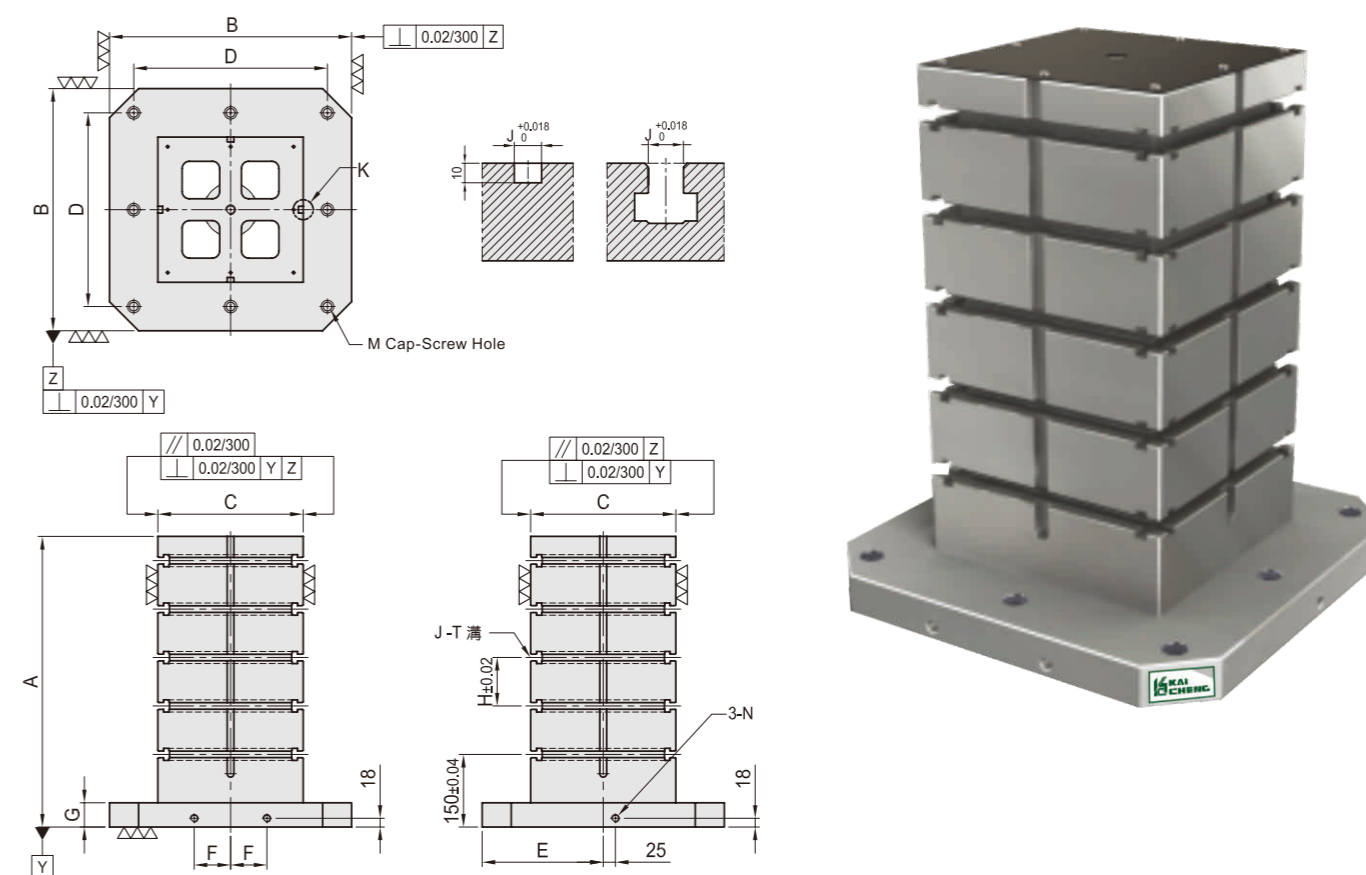
MODEL NO.	A	B	C	D	E	F	G	K	P	S	T	M	N	MTP	Mounting holes	Kg	
SC02-300300-0500-12	500	300	150	250	150	40	50	50	1	7	$\phi 12$	M12	M12	M12	64	4	90
SC02-400400-0500-12	500	400	250	320	200	55	50	50	3	7	$\phi 12$	M12	M16	M16	128	4	155
SC02-400400-0650-12	650									10					176		200
SC02-500500-0600-12	600	500	300	400	250	75	50	50	4	9	$\phi 12$	M12	M16	M16	200	8	240
SC02-500500-0750-12	750									12					260		300
SC02-630630-0700-12	700	630	350	500	315	100	50	50	5	11	$\phi 12$	M12	M16	M16	288	8	360
SC02-630630-0850-12	850									14					360		445
SC02-800800-0800-12	800	800	500	640	400	135	50	50	8	13	$\phi 12$	M12	M16	M16	504	8	635
SC02-800800-1000-12	1000									17					648		780
SC02-10001000-1000-12	1000	1000	600	800	500	165	55	50	10	17	$\phi 12$	M12	M20	M16	792	8	1164
SC02-10001000-1250-12	1250									22					1012		1391

Special design is welcome.

# SC03

## SQUARE TOOLING COLUMN

- **Material** : FCD55
- **Heat treated** : Normalized
- **Application** : Horizontal Machining Center
- **Features** : Alignment bushing & thread insert at every hole location, easily adapts to standardized jig components.



Unit:mm

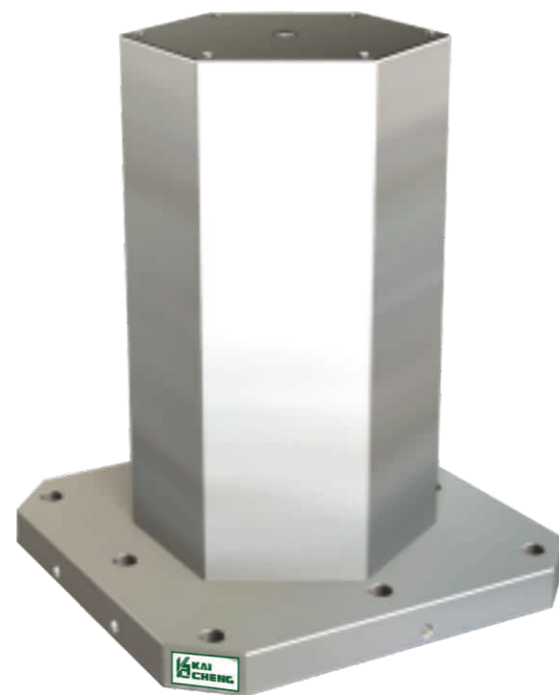
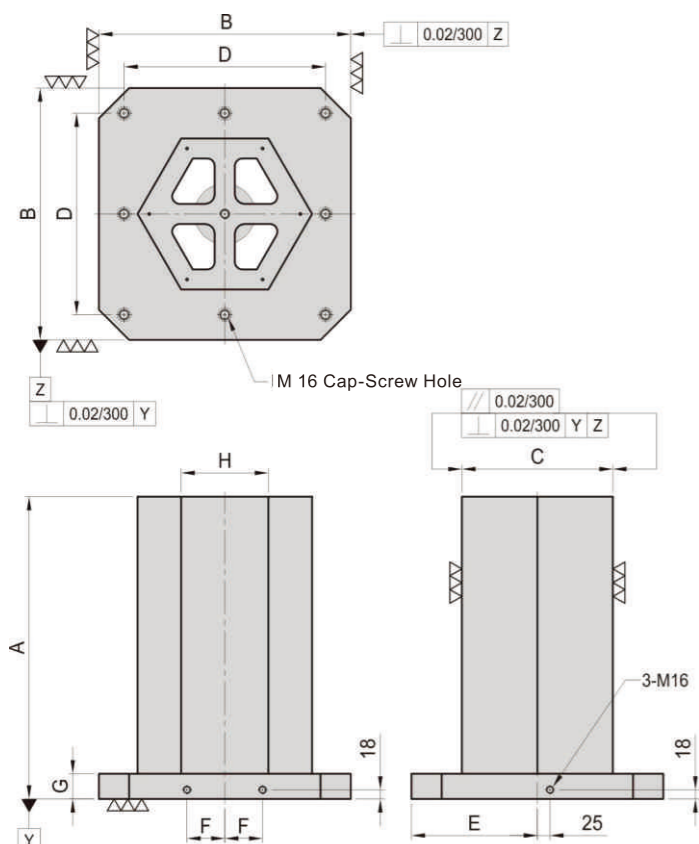
MODEL NO.	A	B	C	D	E	F	G	M	N	K	S	J	Mounting holes	Kg
SC03-400400-0500-14	500											3	4	160
SC03-400400-0650-14	650	400	250	320	200	55	50	M16	M16	100	4	14	4	200
SC03-500500-0600-14	600											4	8	270
SC03-500500-0750-14	750	500	300	400	250	75	50	M16	M16	100	5	14	8	300
SC03-630630-0700-14	700											4	8	375
SC03-630630-0850-14	850	630	350	500	315	100	50	M16	M16	125	5	14	8	460
SC03-800800-0800-14	800											4	8	655
SC03-800800-1000-14	1000	800	500	640	400	135	50	M16	M16	150	5	14	8	800
SC03-10001000-1000-14	1000											5	8	1146
SC03-10001000-1250-14	1250	1000	600	800	500	165	55	M20	M16	160	6	14	8	1358

Special design is welcome.

# HCC01

## HEXAGONAL CUBE

- **Material** : FCD55
- **Heat treated** : Normalized
- **Application** : Horizontal Machining Center
- **Features** : Ready to accept a hole pattern for your special jig.



Unit:mm

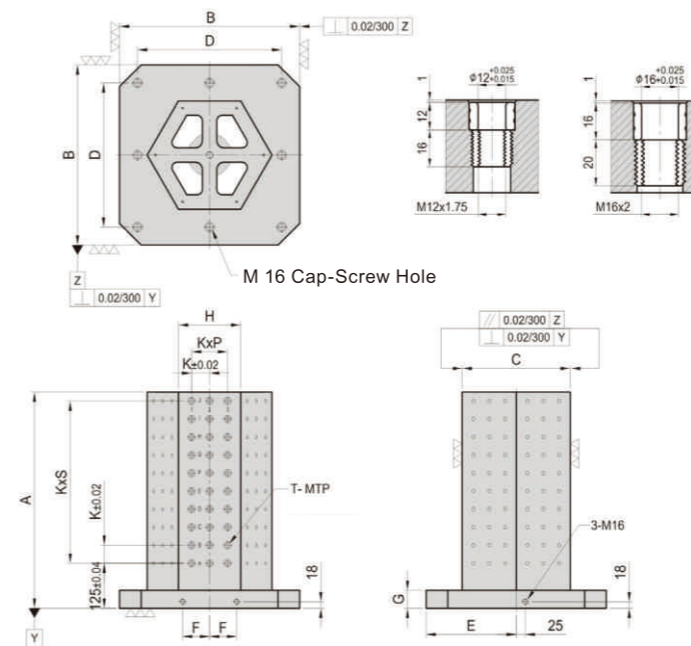
MODEL NO.	A	B	C	D	E	F	G	H	Mounting holes	Kg
HCC01-400400-0500	500	400	250	320	200	55	50	144	4	151
HCC01-400400-0650	650									183
HCC01-500500-0600	600	500	300	400	250	75	50	173	8	233
HCC01-500500-0750	750									272
HCC01-630630-0700	700	630	350	500	315	100	50	202	8	361
HCC01-630630-0850	850									408
HCC01-800800-0800	800	800	500	640	400	135	50	289	8	619
HCC01-800800-1000	1000									713

Special design is welcome.

# HCC02

## HEXAGONAL CUBE

- **Material** : FCD55
- **Heat treated** : Normalized
- **Application** : Horizontal Machining Center
- **Features** : Alignment bushing & thread insert at every hole location, easily adapts to standardized jig components.



Unit:mm

MODEL NO.	A	B	C	D	E	F	G	H	K	P	S	T	MTP	Mounting holes	Kg	
HCC02-400400-0500-12	500	400	250	320	200	55	50	144	50	1	7	ø12	M12	96	4	149
HCC02-400400-0650-12	650										10			132		180
HCC02-500500-0600-12	600	500	300	400	250	75	50	173	50	2	9	ø12	M12	180	8	228
HCC02-500500-0750-12	750										12			234		267
HCC02-630630-0700-12	700	630	350	500	315	100	50	202	50	2	11	ø12	M12	216	8	356
HCC02-630630-0850-12	850										14			270		407
HCC02-800800-0800-12	800	800	500	640	400	135	50	289	50	4	13	ø12	M12	420	8	609
HCC02-800800-1000-12	1000										17			540		700

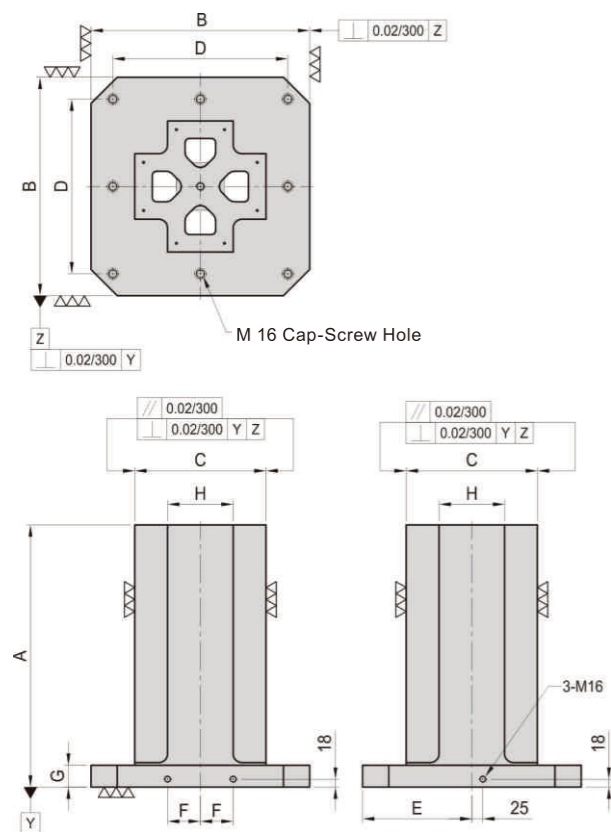
MODEL NO.	A	B	C	D	E	F	G	H	K	P	S	T	MTP	Mounting holes	Kg	
HCC02-400400-0500-16	500	400	250	320	200	55	50	144	50	1	7	ø16	M16	96	4	147
HCC02-400400-0650-16	650										10			132		177
HCC02-500500-0600-16	600	500	300	400	250	75	50	173	50	2	9	ø16	M16	180	8	224
HCC02-500500-0750-16	750										12			234		262
HCC02-630630-0700-16	700	630	350	500	315	100	50	202	50	2	11	ø16	M16	216	8	351
HCC02-630630-0850-16	850										14			270		396
HCC02-800800-0800-16	800	800	500	640	400	135	50	289	50	4	13	ø16	M16	420	8	600
HCC02-800800-1000-16	1000										17			540		688

Special design is welcome.

# CC01

## CROSS TOOLING COLUMN

- **Material** : FCD55
- **Heat treated** : Normalized
- **Application** : Horizontal Machining Center
- **Features** : Ready to accept a hole pattern for your special jig.



Unit:mm

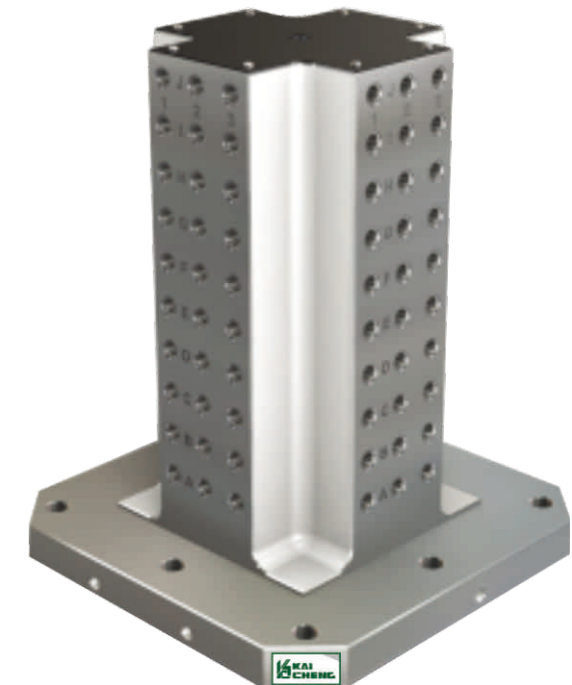
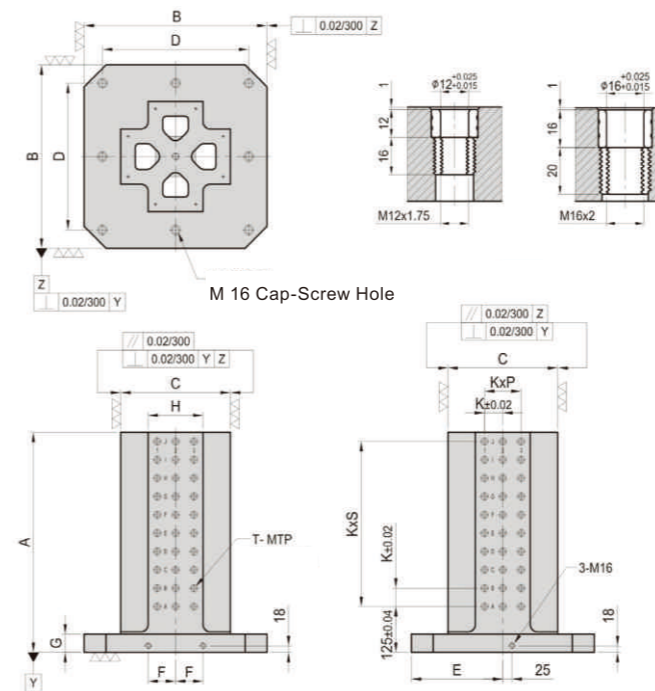
MODEL NO.	A	B	C	D	E	F	G	H	Mounting holes	Kg
CC01-400400-0500	500	400	250	320	200	55	50	125	4	154
CC01-400400-0650	650									188
CC01-500500-0600	600	500	300	400	250	75	50	150	8	244
CC01-500500-0750	750									287
CC01-630630-0700	700	630	350	500	315	100	50	200	8	373
CC01-630630-0850	850									424
CC01-800800-0800	800	800	500	640	400	135	50	300	8	628
CC01-800800-1000	1000									753

Special design is welcome.

# CC02

## CROSS TOOLING COLUMN

- **Material** : FCD55
- **Heat treated** : Normalized
- **Application** : Horizontal Machining Center
- **Features** : Alignment bushing & thread insert at every hole location, easily adapts to standardized jig components.



Unit:mm

MODEL NO.	A	B	C	D	E	F	G	H	K	P	S	T	MTP	Mounting holes	Kg	
CC02-400400-0500-12	500	400	250	320	200	55	50	125	50	1	7	ø12	M12	64	4	152
CC02-400400-0650-12	650										10			88		186
CC02-500500-0600-12	600	500	300	400	250	75	50	150	50	2	9	ø12	M12	120	8	250
CC02-500500-0750-12	750										12			156		293
CC02-630630-0700-12	700	630	350	500	315	100	50	200	50	3	11	ø12	M12	192	8	368
CC02-630630-0850-12	850										14			240		418
CC02-800800-0800-12	800	800	500	640	400	135	50	300	50	5	13	ø12	M12	336	8	640
CC02-800800-1000-12	1000										17			432		740

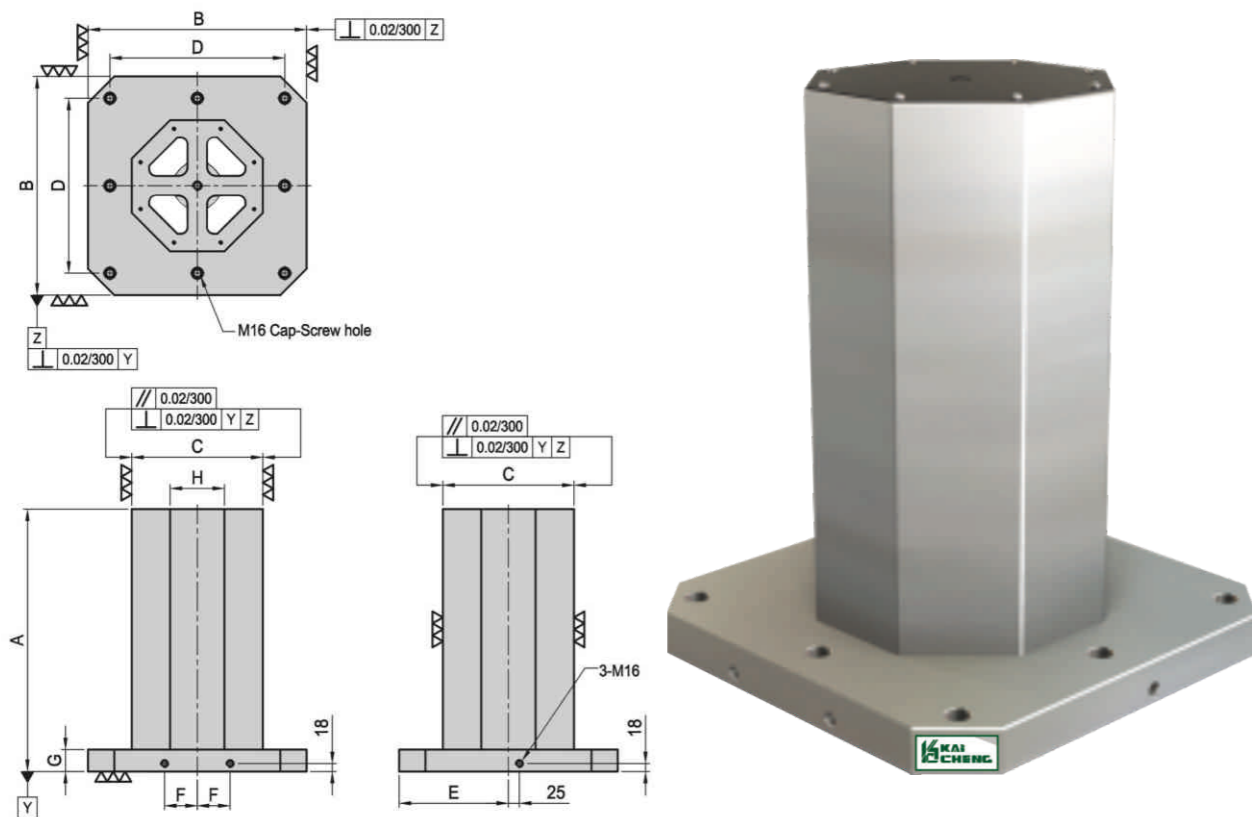
MODEL NO.	A	B	C	D	E	F	G	H	K	P	S	T	MTP	Mounting holes	Kg	
CC02-400400-0500-16	500	400	250	320	200	55	50	125	50	1	7	ø16	M16	64	4	151
CC02-400400-0650-16	650										10			88		184
CC02-500500-0600-16	600	500	300	400	250	75	50	150	50	2	9	ø16	M16	120	8	247
CC02-500500-0750-16	750										12			156		290
CC02-630630-0700-16	700	630	350	500	315	100	50	200	50	3	11	ø16	M16	192	8	364
CC02-630630-0850-16	850										14			240		413
CC02-800800-0800-16	800	800	500	640	400	135	50	300	50	5	13	ø16	M16	336	8	633
CC02-800800-1000-16	1000										17			432		733

Special design is welcome.

# OCC01

## OCTAGONAL CUBE

- **Material** : FCD55
- **Heat treated** : Normalized
- Application** : Horizontal Machining Center
- Features** : Ready to accept a hole pattern for your special jig.



Unit:mm

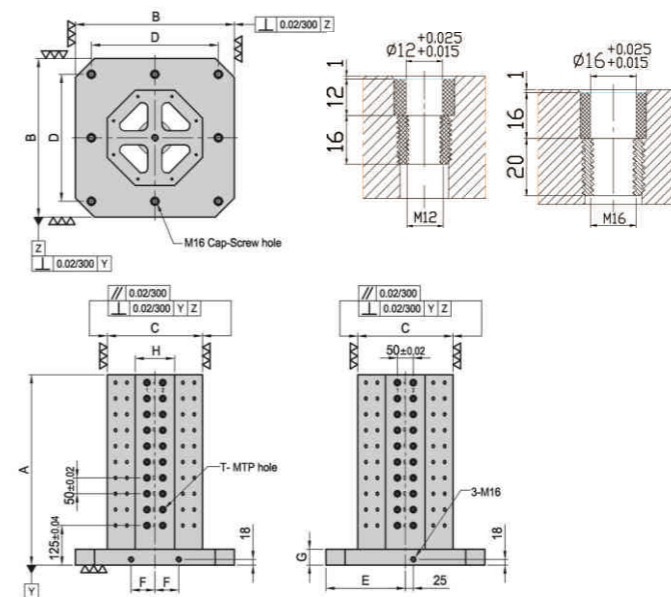
MODEL NO.	A	B	C	D	E	F	G	H	Mounting holes	Kg
OCC01-400400-0500	500	400	250	320	200	55	50	103	4	148
OCC01-400400-0650	650									179
OCC01-500500-0600	600	500	300	400	250	75	50	124	8	227
OCC01-500500-0750	750									264
OCC01-630630-0700	700	630	350	500	315	100	50	145	8	350
OCC01-630630-0850	850									395
OCC01-800800-0800	800	800	500	640	400	135	50	207	8	622
OCC01-800800-1000	1000									711

Special design is welcome.

# OCC02

## OCTAGONAL CUBE

- **Material** : FCD55
- **Heat treated** : Normalized
- Application** : Horizontal Machining Center
- Features** : Alignment bushing & thread insert at every hole location, easily adapts to standardized jig components.



Unit:mm

MODEL NO.	A	B	C	D	E	F	G	H	K	P	S	T	MTP	Mounting holes	Kg
OCC02-400400-0500-12	500	400	250	320	200	55	50	103	50	1	7	128	M12	4	145
OCC02-400400-0650-12	650										10				176
OCC02-500500-0600-12	600	500	300	400	250	75	50	124	50	1	9	160	M12	8	223
OCC02-500500-0750-12	750										12				208
OCC02-630630-0700-12	700	630	350	500	315	100	50	145	50	1	11	192	M12	8	345
OCC02-630630-0850-12	850										14				240
OCC02-800800-0800-12	800	800	500	640	400	135	50	207	50	3	13	448	M12	8	611
OCC02-800800-1000-12	1000										17				576

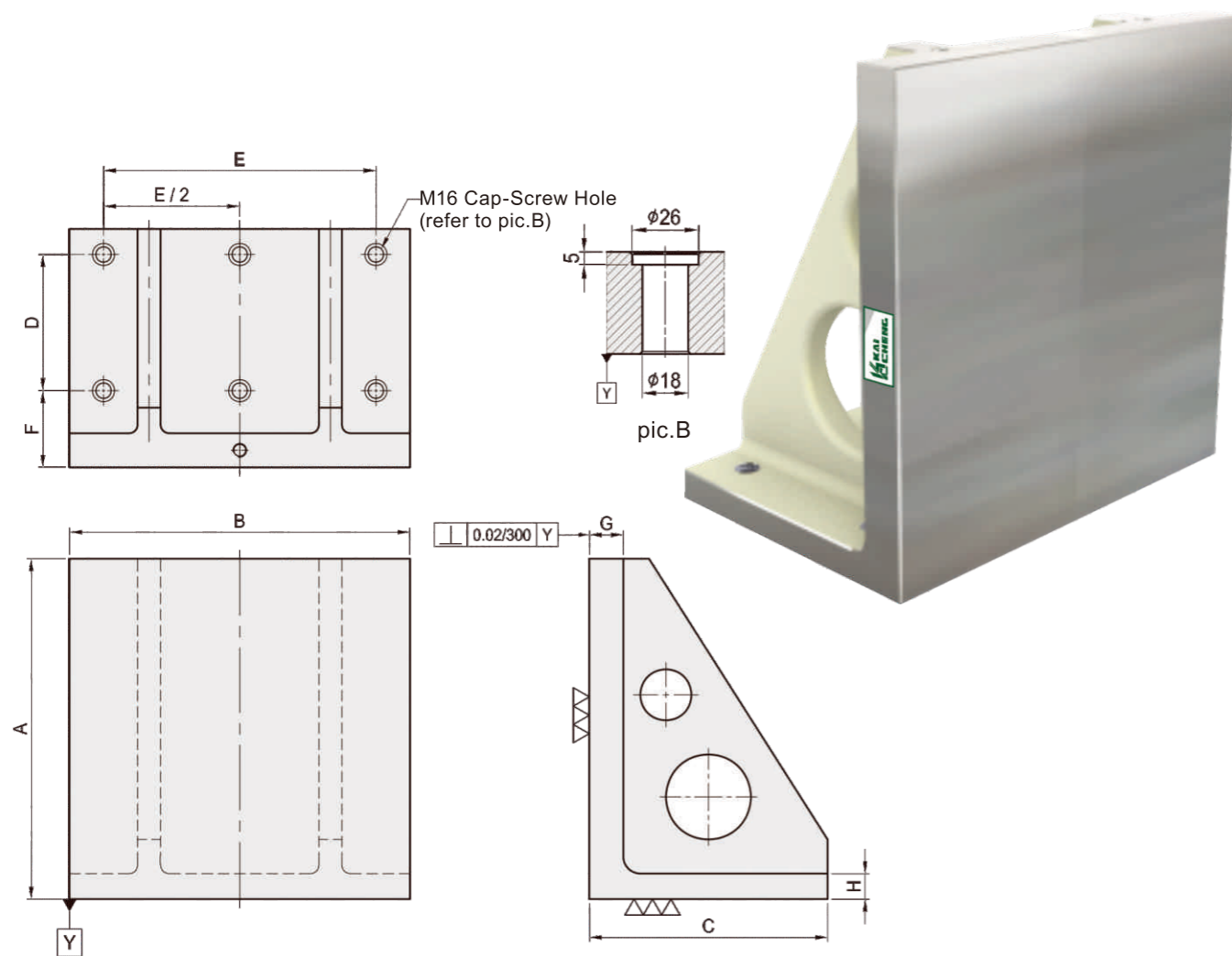
MODEL NO.	A	B	C	D	E	F	G	H	K	P	S	T	MTP	Mounting holes	Kg
OCC02-400400-0500-16	500	400	250	320	200	55	50	103	50	1	7	128	M16	4	142
OCC02-400400-0650-16	650										10				176
OCC02-500500-0600-16	600	500	300	400	250	75	50	124	50	1	9	160	M16	8	219
OCC02-500500-0750-16	750										12				208
OCC02-630630-0700-16	700	630	350	500	315	100	50	145	50	1	11	192	M16	8	341
OCC02-630630-0850-16	850										14				240
OCC02-800800-0800-16	800	800	500	640	400	135	50	207	50	3	13	448	M16	8	601
OCC02-800800-1000-16	1000										17				576

Special design is welcome.

# HAP01

## ANGLE PLATE

- **Material** : FCD55
- **Heat treated** : Normalized
- **Application** : Horizontal Machining Center
- **Features** : Ready to accept a hole pattern for your special jig.



Unit:mm

MODEL NO.	A	B	C	D	E	F	G	H	Mounting holes	Kg
HAP01-220300-0300	300	300	220	100	250	90	40	30	6	50
HAP01-280400-0400	400	400	280	160	320	90	40	30	6	90
HAP01-340500-0500	500	500	340	200	400	90	50	35	6	165
HAP01-345630-0630	630	630	435	250	500	100	50	40	6	275
HAP01-525800-0800	800	800	525	320	640	115	50	45	6	475

Special design is welcome.

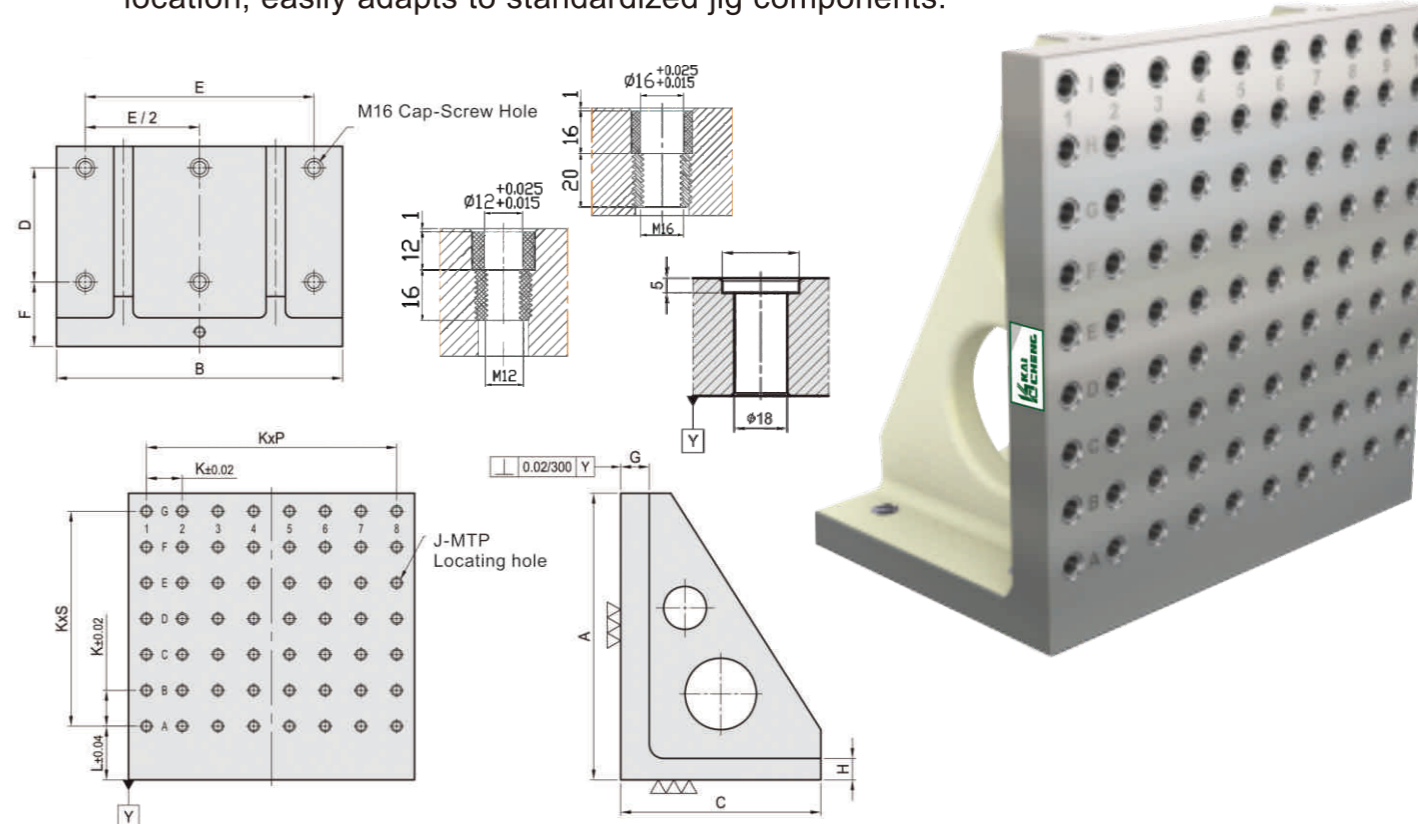
JIG AND FIXTURE

JIG AND FIXTURE

# HAP02

## ANGLE PLATE

- **Material** : FCD55
- **Heat treated** : Normalized
- **Application** : Horizontal Machining Center
- **Features** : Alignment bushing & thread insert at every hole location, easily adapts to standardized jig components.



Unit:mm

MODEL NO.	A	B	C	D	E	F	G	H	J	K	L	P	S	MTP Mounting holes	Mounting holes	Kg	
HAP02-220300-0300-12	300	300	220	100	250	90	40	30	φ12	M12	50	75	5	4	30	6	50
HAP02-280400-0400-12	400	400	280	160	320	90	40	30	φ12	M12	50	75	7	6	56	6	87
HAP02-340500-0500-12	500	500	340	200	400	90	50	35	φ12	M12	50	75	9	8	90	6	173
HAP02-345630-0630-12	630	630	435	250	500	100	50	40	φ12	M12	50	75	11	11	144	6	300
HAP02-525800-0800-12	800	800	525	320	640	115	50	45	φ12	M12	50	75	15	14	240	6	477
HAP02-220300-0300-16	300	300	220	100	250	90	40	30	φ16	M16	50	75	5	4	30	6	46
HAP02-280400-0400-16	400	400	280	160	320	90	40	30	φ16	M16	50	75	7	6	56	6	85
HAP02-340500-0500-16	500	500	340	200	400	90	50	35	φ16	M16	50	75	9	8	90	6	170
HAP02-345630-0630-16	630	630	435	250	500	100	50	40	φ16	M16	50	75	11	11	144	6	295
HAP02-525800-0800-16	800	800	525	320	640	115	50	45	φ16	M16	50	75	15	14	240	6	470

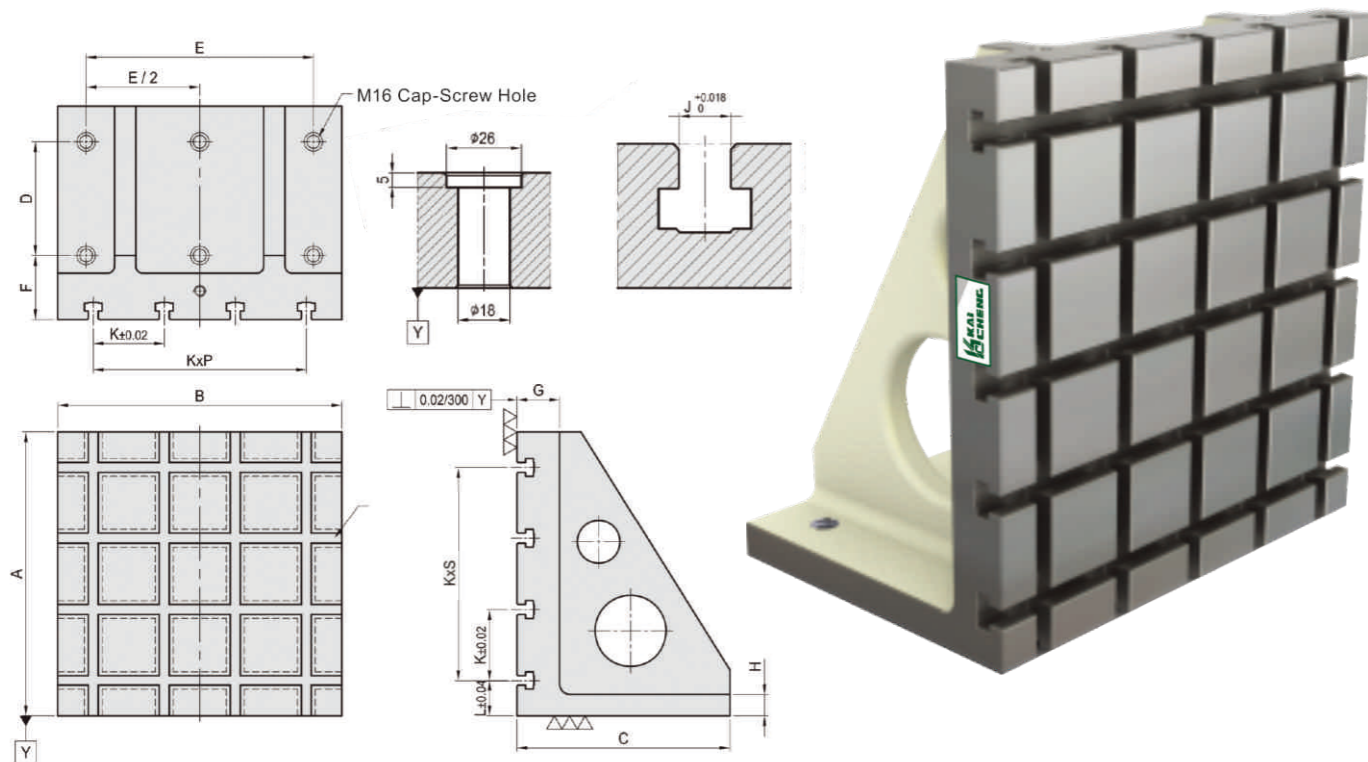
Special design is welcome.

JIG AND FIXTURE

# HAP03

## ANGLE PLATE

- **Material** : FCD55
- **Heat treated** : Normalized
- **Application** : Horizontal Machining Center
- **Features** : T-Slots running horizontally, key-way running vertically, easily adapts to standardized jig components.



Unit:mm

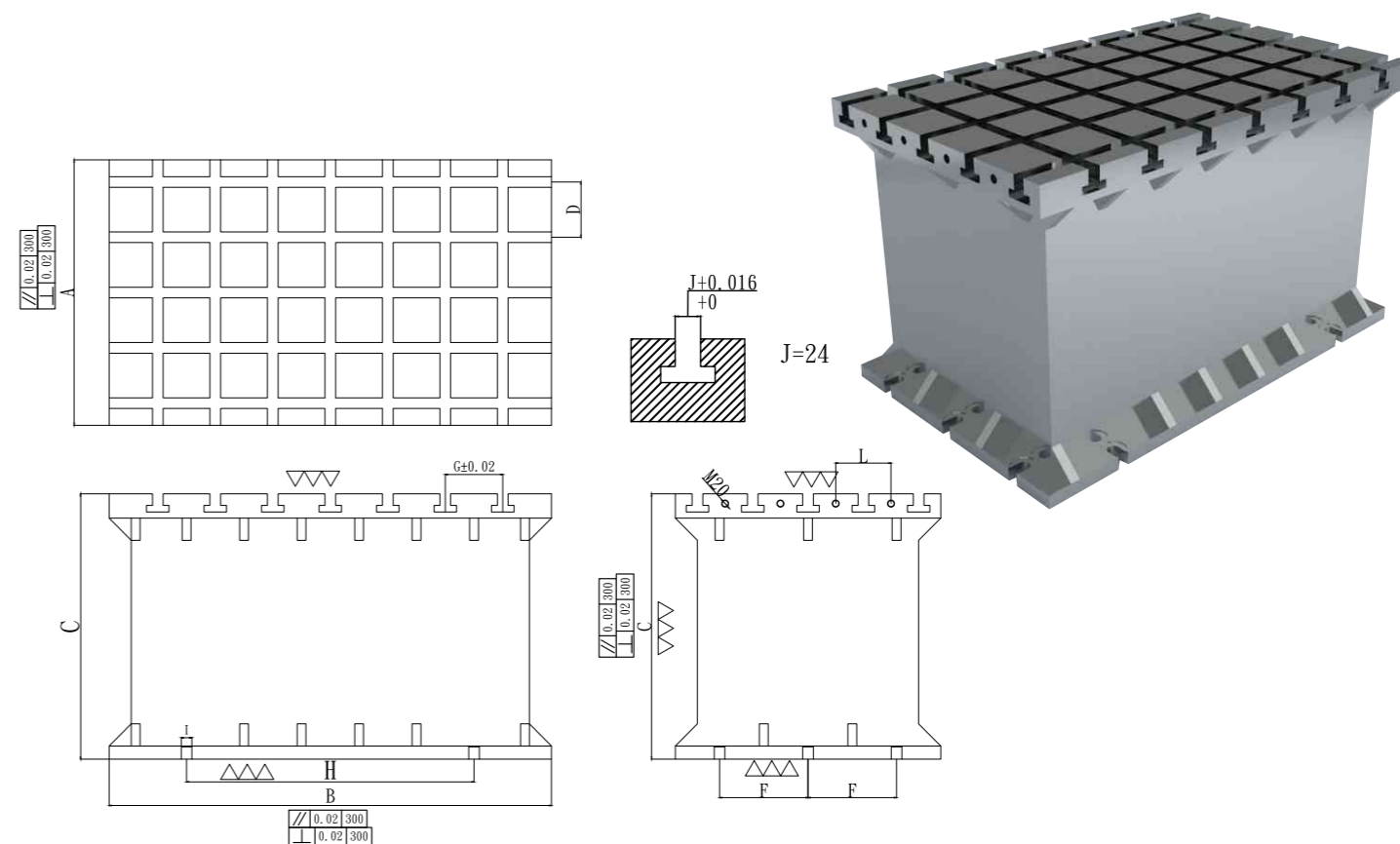
MODEL NO.	A	B	C	D	E	F	G	H	J	K	L	P	S	Mounting holes	Kg
HAP03-220300-0300-14	300	300	220	100	250	90	60	30	14	100	50	2	2	6	53
HAP03-300400-0400-14	400	400	300	160	320							3	3		
HAP03-350500-0500-14	500	500	350	200	400	90	60	35	14	100	50	4	4	6	170
HAP03-450630-0630-14	630	630	450	250	500							100	65		
HAP03-550800-0800-14	800	800	550	320	640	115	75	45	14	150	50	4	4	6	566
HAP03-220300-0300-18	300	300	220	100	250							90	60		
HAP03-300400-0400-18	400	400	300	160	320	90	60	30	14	100	50	3	3	6	96
HAP03-350500-0500-18	500	500	350	200	400							90	60		
HAP03-450630-0630-18	630	630	450	250	500	100	65	40	14	125	50	4	4	6	285
HAP03-550800-0800-18	800	800	550	320	640							115	75		

Special design is welcome.

# WT01

## WORKING TABLE

- **Material** : FCD55
- **Heat treated** : Normalized
- **Application** : Vertical Machining Center
- **Features** : T-Slots running horizontally, key-way running vertically, easily adapts to standardized jig components.



Unit:mm

MODEL NO.	WIDTH A	LENGTH B	HEIGHT C	D	F	G±0.02	H	I	J+0.016 +0	L	WEIGHT KG
WT01-6001000-200ST	600	1000	200	125	200	130	650	24	24	125	410KG
WT01-6001000-400ST			400								620KG
WT01-6001000-600ST			600								800KG
WT01-6001000-800ST			800								1015KG

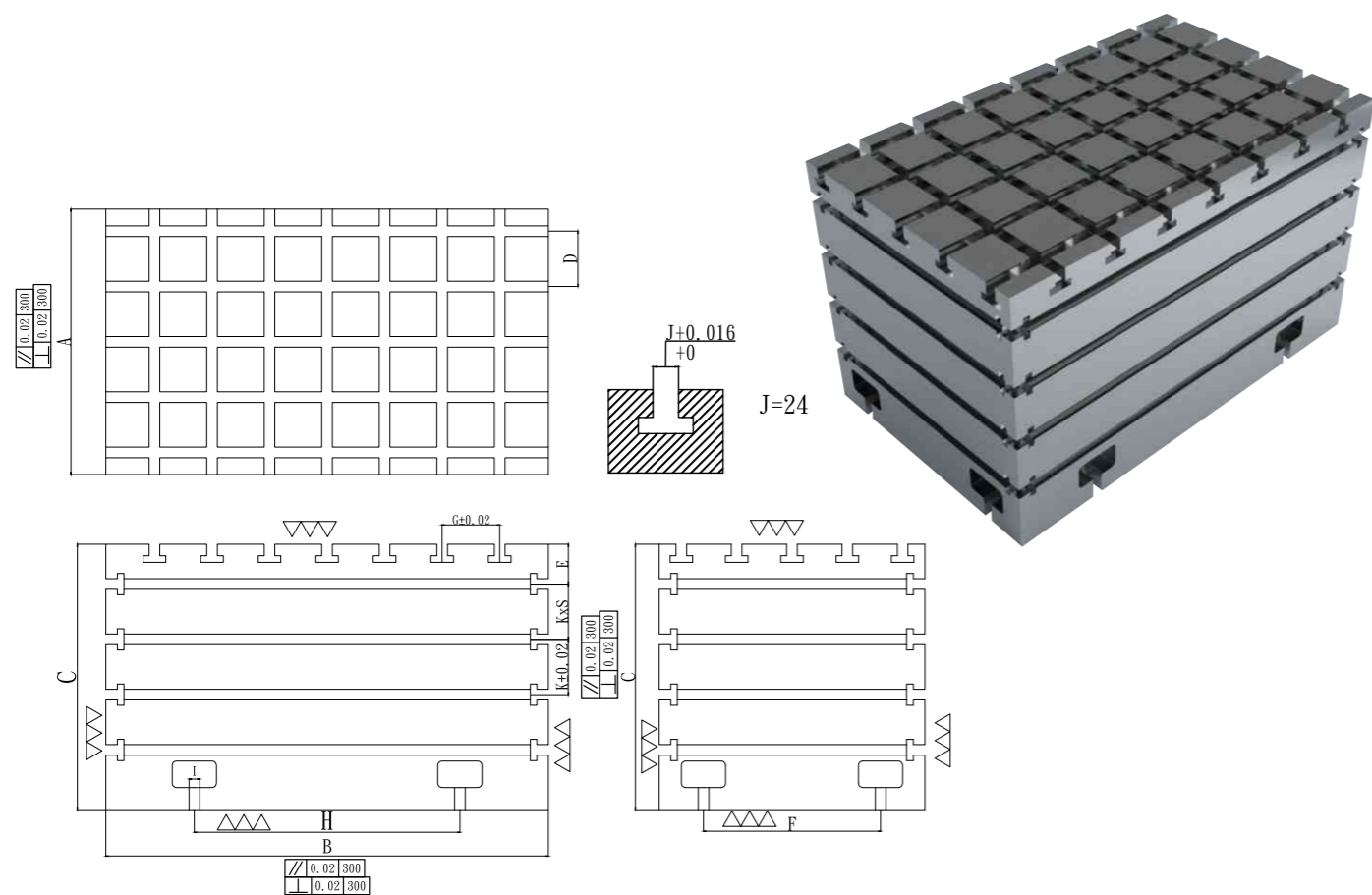
Special design is welcome.



# WT02

## WORKING TABLE

- **Material** : FCD55
- **Heat treated** : Normalized
- **Application** : 5-Face Double column Machining center
- **Features** : T-Slots running horizontally, key way running vertically, easily adapts to standardized jig components.



Unit:mm

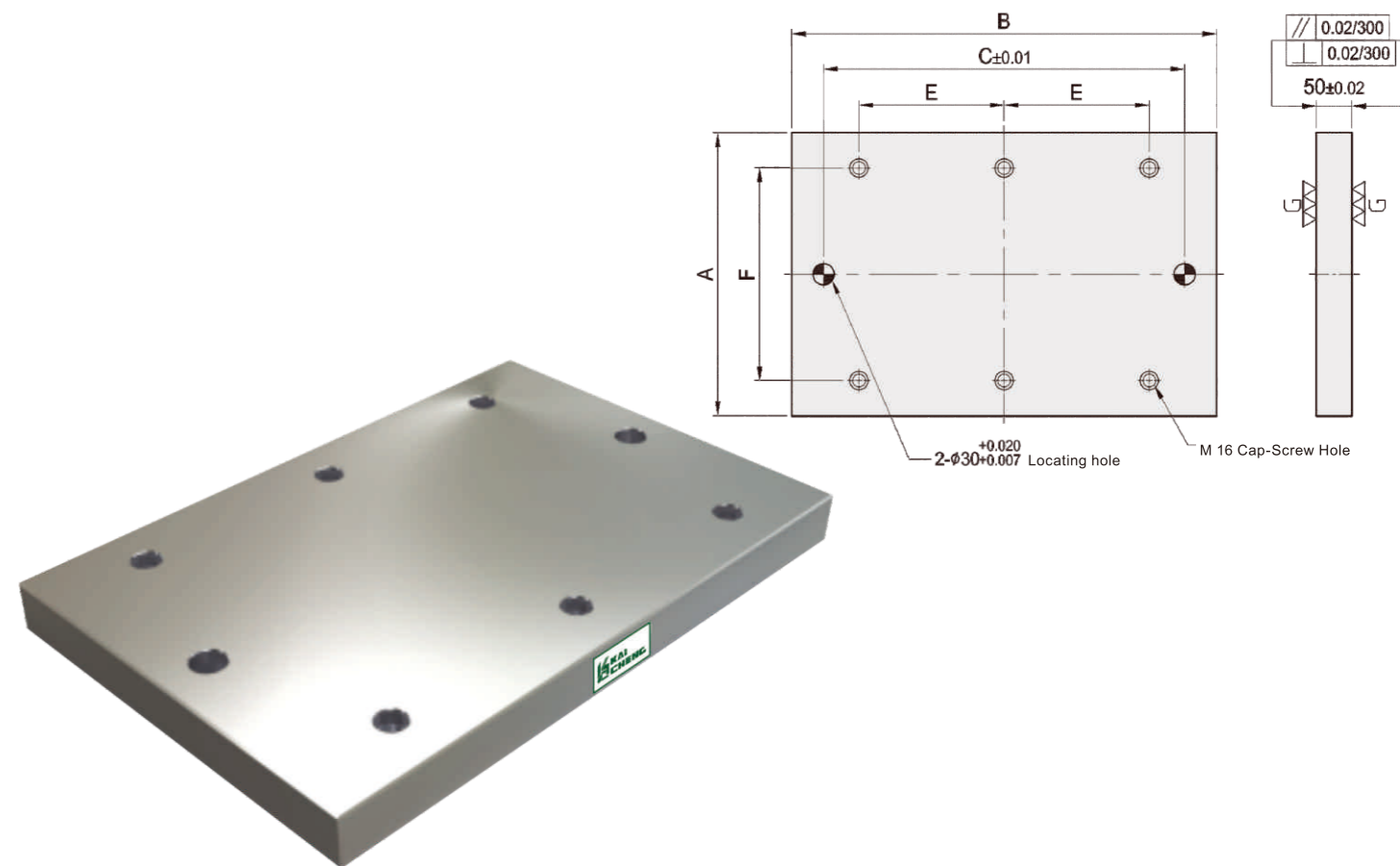
MODEL NO.	WIDTH A	LENGTH B	HEIGHT C	D	E±0.05	F	G±0.02	H	I	J+0.016 +0	K±0.02	WEIGHT KG
WT02-6001000-400AD			400									935KG
WT02-6001000-600AD	600	1000	600	125	90	400	130	600	24	24	125	1370KG
WT02-6001000-800AD			800									1765KG

Special design is welcome.

# VBP01

## BASE PLATE

- **Material** : FCD55
- **Heat treated** : Normalized
- **Application** : Vertical Machining Center
- **Features** : Ready to accept a hole pattern for your special jig.



Unit:mm

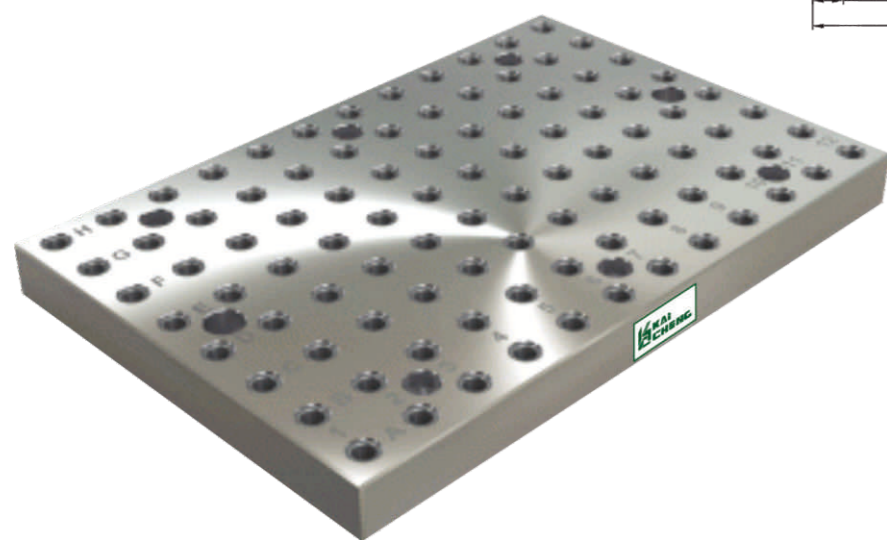
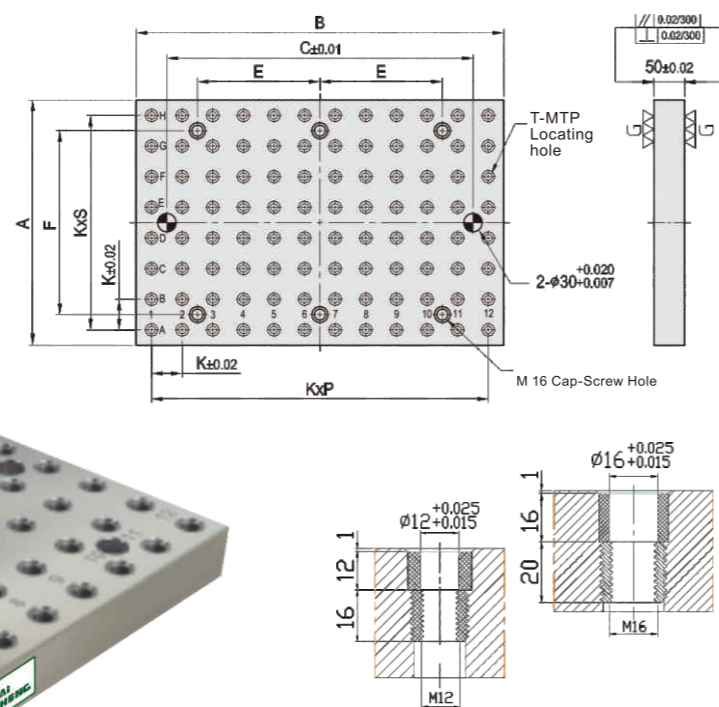
MODEL NO.	A	B	C	E	F	Kg
VBP01-50400-0600	400	600	-	-	-	88
VBP01-50500-0600	500					106
VBP01-50600-0600	600					127
VBP01-50400-0800	400	800	-	-	-	113
VBP01-50450-0900	450	900				142
VBP01-50500-1000	500	1000	-	-	-	176
VBP01-50600-1200	600	1200				256

Special design is welcome.

# VBP02

## BASE PLATE

- **Material** : FCD55
- **Heat treated** : Normalized
- **Application** : Vertical Machining Center
- **Features** : Alignment bushing & thread insert at every hole location, easily adapts to standardized jig components.



Unit:mm

MODEL NO.	A	B	C	E	F	T	K	P	S	MTP	Kg
VBP02-50400-0600-12	400								7	96	90
VBP02-50500-0600-12	500	600	-	-	∅12	M12	50	11	9	120	112
VBP02-50600-0600-12	600								11	144	134
VBP02-50400-0800-12	400	800	-	-	∅12	M12	50	15	7	128	109
VBP02-50450-0900-12	450	900	-	-	∅12	M12	50	17	8	158	138
VBP02-50500-1000-12	500	1000	-	-	∅12	M12	50	19	9	200	165
VBP02-50600-1200-12	600	1200	-	-	∅12	M12	50	23	11	288	244

Special design is welcome.

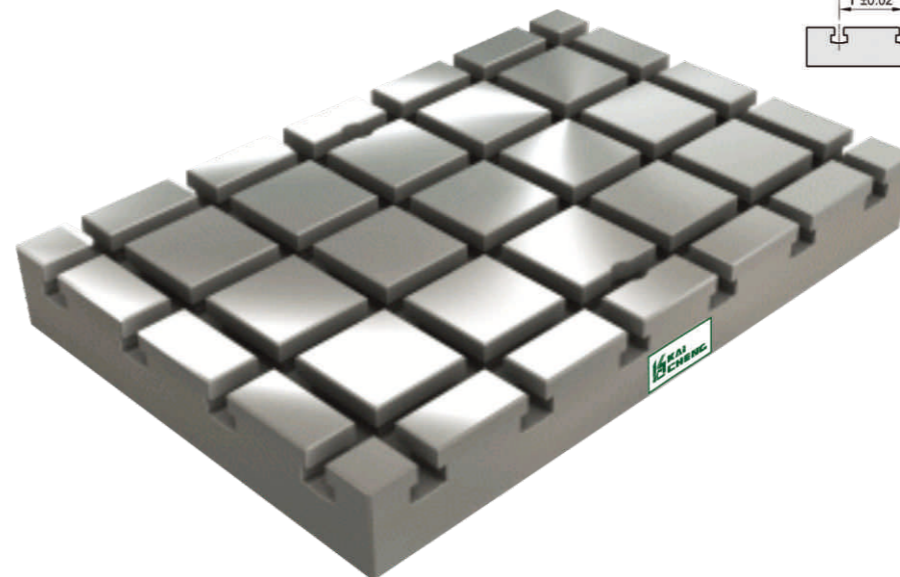
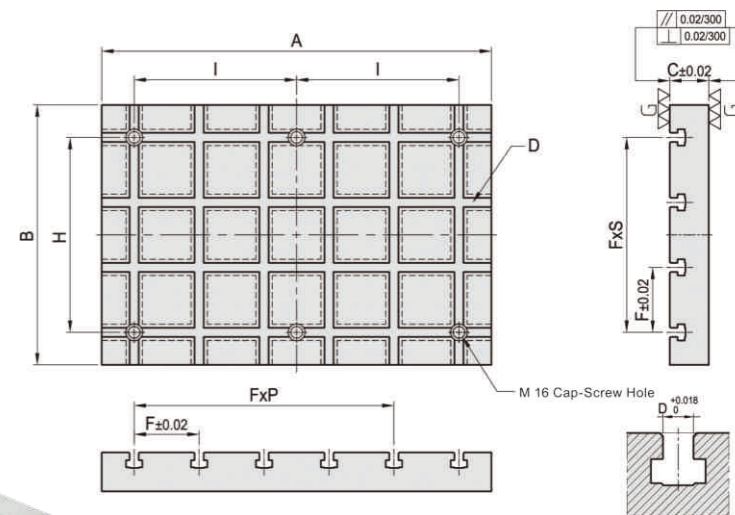
JIG AND FIXTURE

JIG AND FIXTURE

# VBP03

## BASE PLATE

- **Material** : FCD55
- **Heat treated** : Normalized
- **Application** : Vertical Machining Center
- **Features** : T-Slots running horizontally, key-way running vertically, easily adapts to standardized jig components.



Unit:mm

MODEL NO.	A	B	C	D	F	P	S	H	I	Kg
VBP03-60400-0600-14		400					3			89
VBP03-60500-0600-14	600	500	60	14	100	5	4	-	-	108
VBP03-60600-0600-14		600					5			120
VBP03-60400-0800-14	800	400					7	3	-	108
VBP03-60450-0900-14	900	450	60	14	100		8	-	-	134
VBP03-60500-1000-14	1000	500					9	4	-	164
VBP03-60600-1200-14	1200	600	60	14	100		11	5	-	240

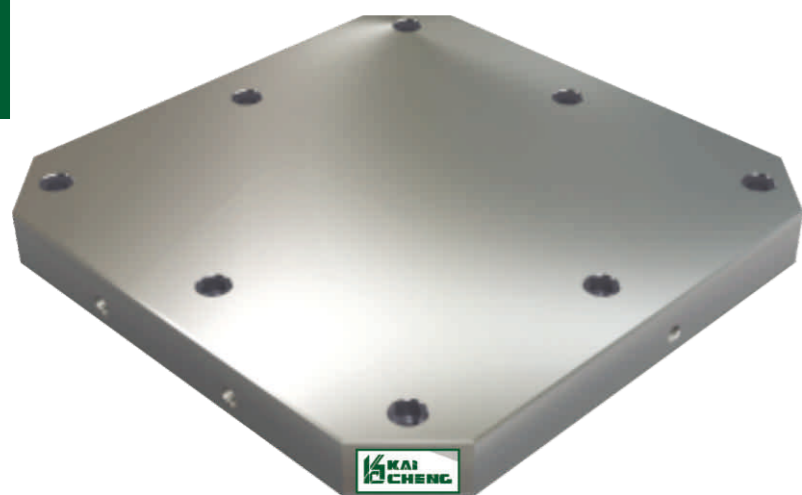
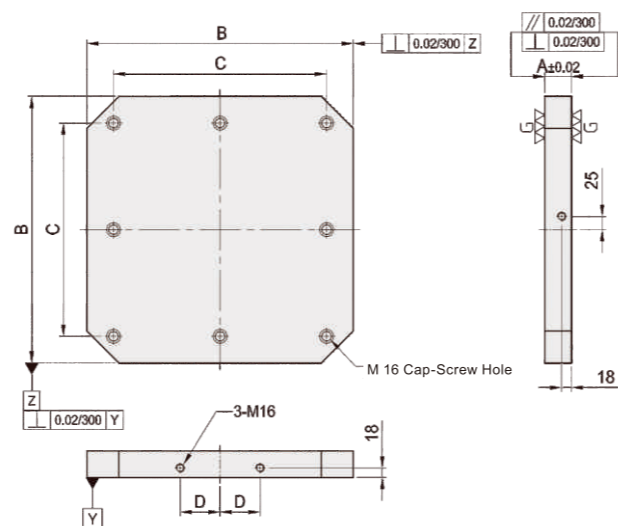
Special design is welcome.

MODEL NO.	A	B	C	D	F	P	S	H	I	Kg
VBP03-75400-0600-18		400					3			118
VBP03-75500-0600-18	600	500	75	18	100	5	4	-	-	147
VBP03-75600-0600-18		600					5			173
VBP03-75400-0800-18	800	400					7	3	-	151
VBP03-75450-0900-18	900	450	75	18	100		8	-	-	182
VBP03-75500-1000-18	1000	500					9	4	-	228
VBP03-75600-1200-18	1200	600	75	18	100		11	5	-	329

# HBP01

## BASE PLATE

- **Material** : FCD55
- **Heat treated** : Normalized
- **Application** : Horizontal Machining Center
- **Features** : Alignment bushing & thread insert at every hole location, easily adapts to standardized jig components.



Unit:mm

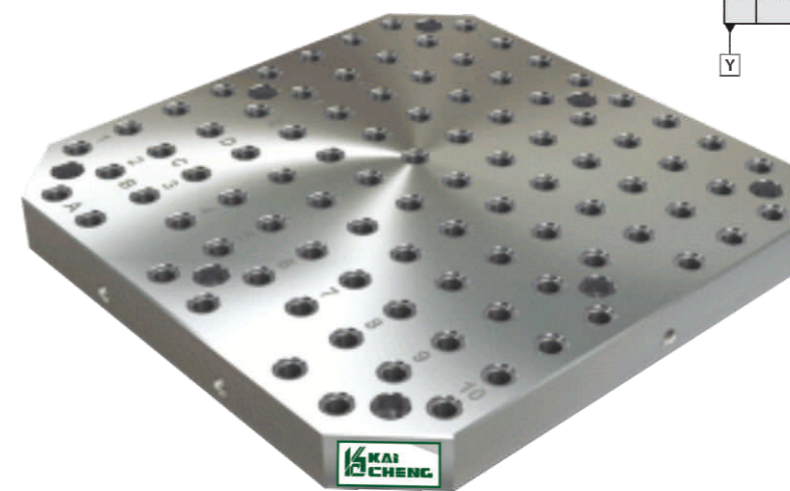
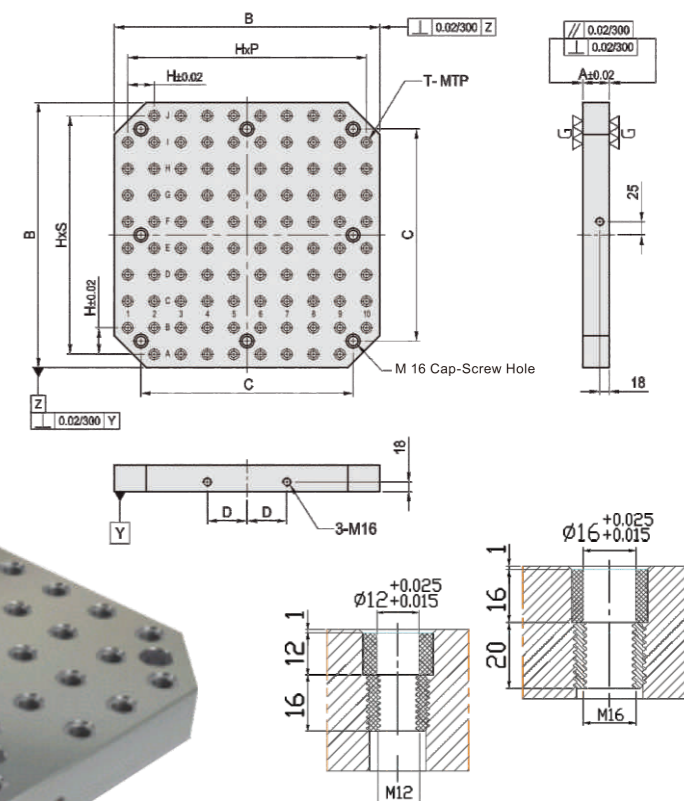
MODEL NO.	A	B	C	D	I	Kg
HBP01-50400-0600-14	50	400	320	55	4	88
HBP01-50500-0600-14	50	500	400	70	8	106
HBP01-50600-0600-14	50	630	500	100	8	127
HBP01-50800-0800-14	50	800	640	135	8	113

Special design is welcome.

# HBP02

## BASE PLATE

- **Material** : FCD55
- **Heat treated** : Normalized
- **Application** : Horizontal Machining Center
- **Features** : Alignment bushing & thread insert at every hole location, easily adapts to standardized jig components.



Unit:mm

MODEL NO.	A	B	C	D	T	H	P	S	MTP	Mounting holes	Kg	
HBP02-50400-0400-12	50	400	320	55	ø12	M12	50	7	7	59	4	54
HBP02-50500-0500-12		500	400	75				9	9	93	8	83
HBP02-50600-0630-12	50	630	500	100	ø12	M12	50	11	11	139	8	135
HBP02-50800-0800-12		800	640	135				15	15	237		206
HBP02-50400-0400-16	50	400	320	55	ø16	M12	50	7	7	59	4	52
HBP02-50500-0500-16		500	400	75				9	9	93	8	80
HBP02-50600-0630-16	50	630	500	100	ø16	M12	50	11	11	139	8	130
HBP02-50800-0800-16		800	640	135				15	15	237		204

Special design is welcome.

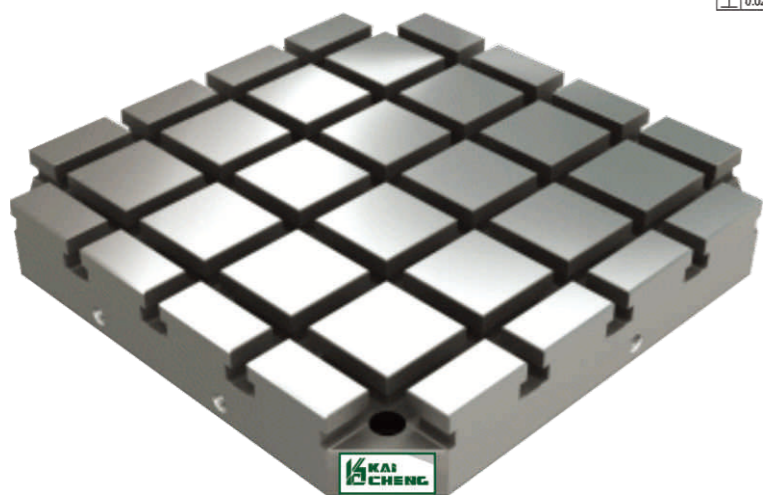
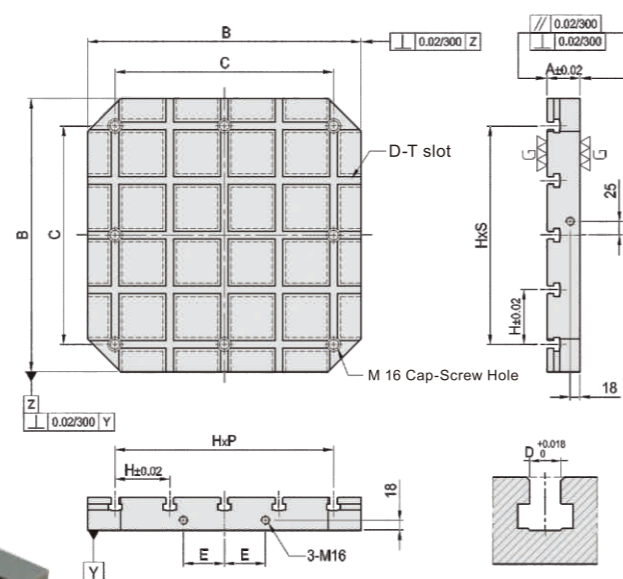
JIG AND FIXTURE

JIG AND FIXTURE

# HBP03

## BASE PLATE

- **Material** : FCD55
- **Heat treated** : Normalized
- **Application** : Horizontal Machining Center
- **Features** : T-Slots running horizontally, key-way running vertically, easily adapts to standardized jig components.



Unit:mm

MODEL NO.	A	B	C	D	E	H	P	S	Mounting holes	Kg
HBP03-60400-0400-14	60	400	320	14	55	80	4	4	4	56
HBP03-60500-0500-14		500	400		75	100			8	90
HBP03-60630-0630-14	60	630	500	14	100	125	4	4	8	150
HBP03-60800-0800-14		800	640		135	160			8	230
HBP03-75400-0400-18	75	400	320	18	55	80	4	4	4	68
HBP03-75500-0500-18		500	400		75	100			8	108
HBP03-75630-0630-18	75	630	500	18	100	125	4	4	8	180
HBP03-75800-0800-18		800	640		135	160			8	295

Special design is welcome.

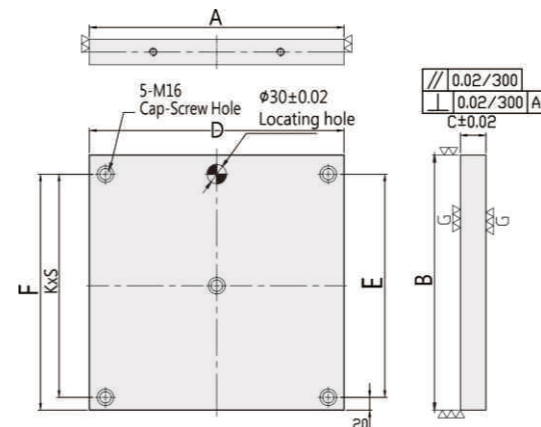
JIG AND FIXTURE

# BCSP01

## SUB-PLATE



- **Material** : FCD55
- **Heat treated** : Normalized
- **Application** : Applicable for replacement double-sided bases
- **Features** : Ready to accept a hole pattern for your special jig.



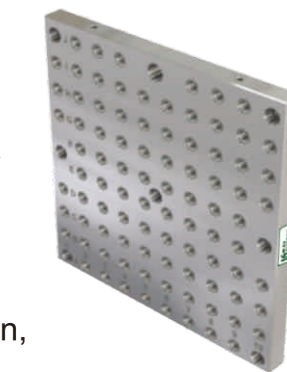
Unit:mm

MODEL NO.	A	B	C	D	E	F	Mounting holes	Kg
BCSP01-40400-0400	400	400	40	350	350	370	5	46
BCSP01-40500-0500	500	500	40	450	450	470	7	72
BCSP01-40630-0630	630	630	40	580	580	600	7	114
BCSP01-50800-0800	800	800	50	750	750	770	7	232

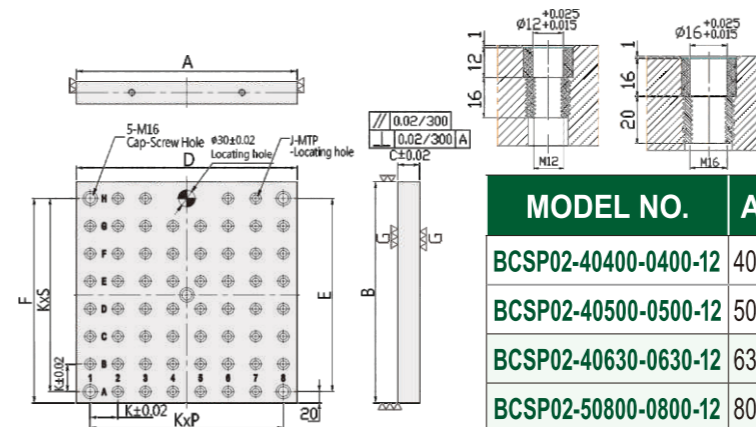
Special design is welcome.

# BCSP02

## SUB-PLATE



- **Material** : FCD55
- **Heat treated** : Normalized
- **Application** : Applicable for replacement double-sided bases
- **Features** : Alignment bushing & thread insert at every hole location, easily adapts to standardized jig components.



Unit:mm

MODEL NO.	A	B	C	D	E	F	K	P	S	G	MTP	Mounting holes	Kg	
BCSP02-40400-0400-12	400	400	40	350	350	370	50	7	7	ø12	M12	58	5	42
BCSP02-40500-0500-12	500	500	40	450	450	470		9	9			94	7	69
BCSP02-40630-0630-12	630	630	40	580	580	600	50	11	11	ø12	M12	138	7	108
BCSP02-50800-0800-12	800	800	50	750	750	770		15	15			250		7

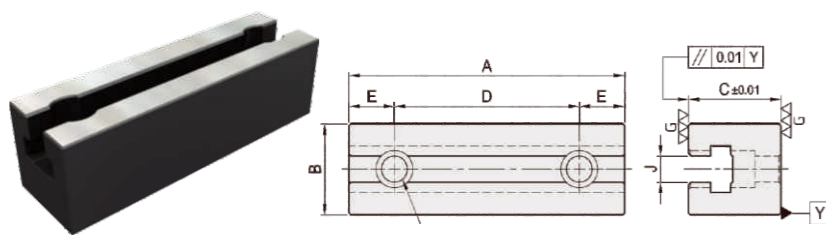
MODEL NO.	A	B	C	D	E	F	K	P	S	G	MTP	Mounting holes	Kg	
BCSP02-40400-0400-16	400	400	40	350	350	370	50	7	7	ø16	M16	58	5	41
BCSP02-40500-0500-16	500	500		450	450	470		9	9			90	7	67
BCSP02-40630-0630-16	630	630	40	580	580	600	50	11	11	ø16	M16	138	7	105
BCSP02-50800-0800-16	800	800	50	750	750	770		15	15			246		7

Special design is welcome.

JIG AND FIXTURE

# TPB01 T SLOT PARALLEL BLOCK

- Material: SCM420
- Heat treated: HRC 60°
- Features: Black Oxide

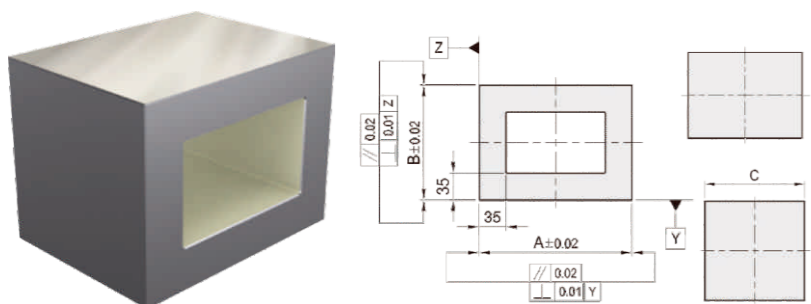


Unit:mm

MODEL NO.	A	B	C	D	E	N	J	Kg
TPB01-5050150-12	149	49	50	100	24.5	M12	14	1.4
TPB01-5050200-12	199	49	50	150	24.5	M12	14	2.3
TPB01-6060150-16	149	59	60	100	24.5	M16	18	2.3
TPB01-6060200-16	199	59	60	150	24.5	M16	18	3.5

# RS01 RECTANGULAR CAST SECTION

- Material: FCD55
- Heat treated: Normalized
- Application: Applicable for base plate or tooling column.
- Features: Assist to compensate the height or level difference of the workpiece. Ready to accept a hole pattern for your special jig.



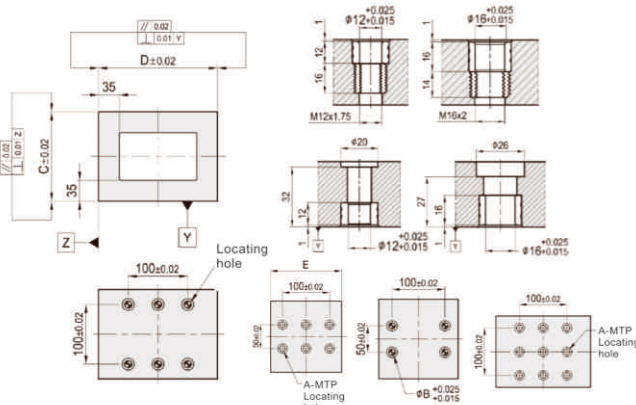
Unit:mm

MODEL NO.	A	B	C	Kg
RS01-200150-0150	200	150	150	23
RS01-250150-0200	250	200	150	30
RS01-300200-0250	300	250	200	56

Special design is welcome.

# RS02 RECTANGULAR CAST SECTION

- Material: FCD55
- Heat treated: Normalized
- Application: Applicable for base plate or tooling column.
- Features: Assist to compensate the height or level difference of the workpiece. Alignment bushing & thread insert at every hole location, easily adapts to standardized jig components.



Unit:mm

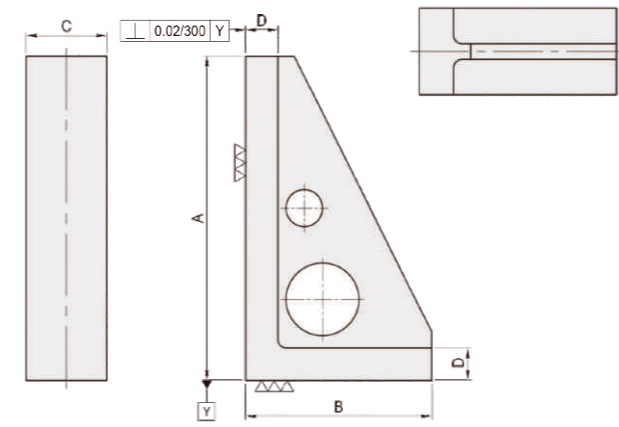
MODEL NO.	A	B	C	D	E	MTP	Mounting holes	Kg
RS02-200150-0150-12	ø12	M12	12	150	200	15	10	23
200				250	21	14	28	
RS02-200150-0150-16	ø16	M16	16	150	200	15	10	29
200				250	21	14	30	

Special design is welcome.

# NAP01

## MC NARROW ANGLE PLATE

- Material: FCD55
- Heat treated: Normalized
- Application: Applicable for vertical/horizontal machining center.
- Features: Support the workpiece, strengthen the jig and can be processed according to the needs.



Unit:mm

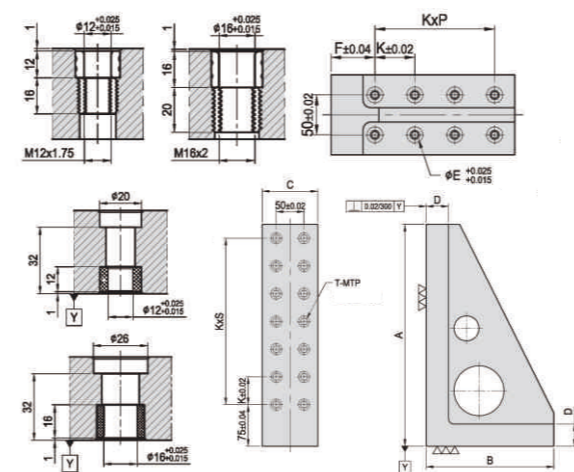
MODEL NO.	A	B	C	D	Kg
NAP01-180100-0300	300	180	100	40	14
NAP01-230100-0400	400	230	100	40	20
NAP01-280100-0500	500	280	100	40	25

Special design is welcome.

# NAP02

## MC NARROW ANGLE PLATE

- Material: FCD55
- Heat treated: Normalized
- Application: Applicable for vertical/horizontal machining center.
- Features: Alignment bushing & thread insert at every hole location, easily adapts to standardized jig components.



Unit:mm

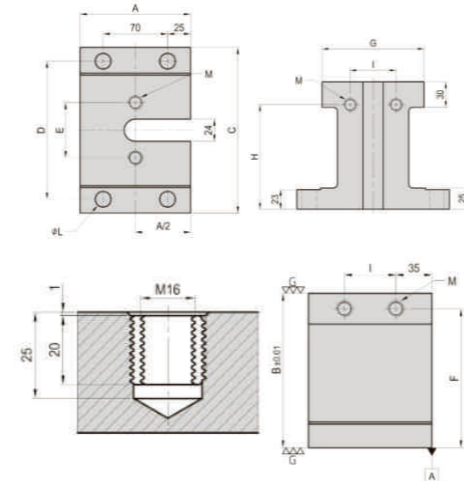
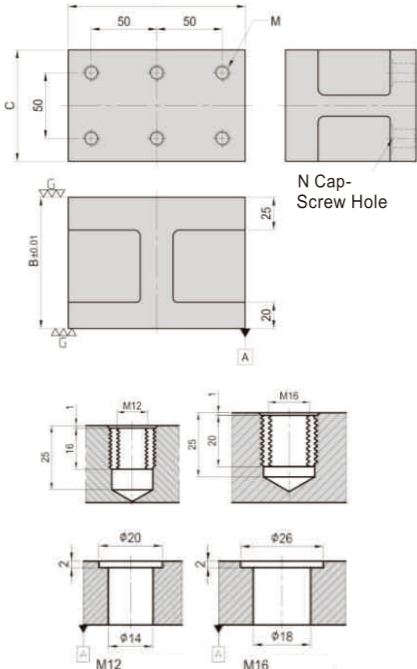
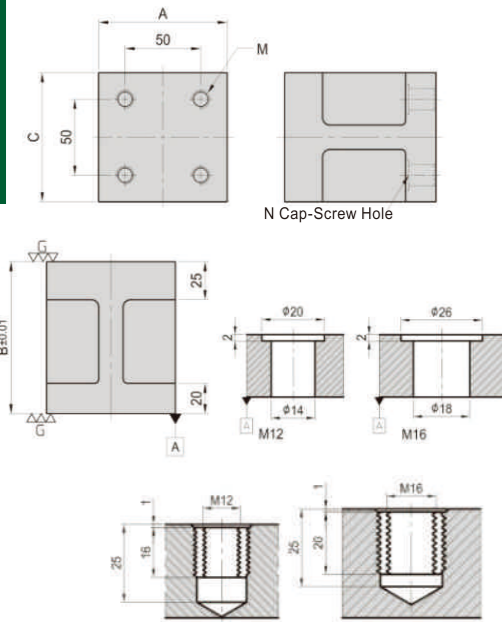
MODEL NO.	A	B	C	D	E	E	K	P	S	T	MTP	Mounting holes	Kg
NAP02-180100-0300-12	300	180								2 4	10	6	12
NAP02-230100-0400-12	400	230	100	40	12	55	50	3	6	ø12	M12	14	19
NAP02-280100-0500-12	500	280								4 8		18	23
NAP02-180100-0300-16	300	180								2 4		10	13
NAP02-230100-0400-16	400	230	100	40	16	55	50	3	6	ø16	M16	14	20
NAP02-280100-0500-16	500	280								4 8		18	24

Special design is welcome.

# HCS01 HCS02 HCS03

## H/CAST SECTION

- **Material** : FCD55
- **Heat treated** : Normalized
- **Features** : Assist to compensate the height or level difference of the workpiece.



Unit:mm

MODEL NO.	A	B	C	M	N	KG
HCS01-085085-0100-12	85	100	85	M12	M12	3.6
HCS01-085085-0125-12	125	85	M12	M12	3.6	
HCS01-085085-0100-16	85	100	85	M16	M16	4.13
HCS01-085085-0125-16	125	85	M16	M16	4.13	

Unit:mm

MODEL NO.	A	B	C	M	N	KG
HCS02-135085-0100-12	135	100	85	M12	M12	5.8
HCS02-135085-0125-12	125	135	85	M12	M12	5.8
HCS02-135085-0100-16	135	100	85	M16	M16	6.6
HCS02-135085-0125-16	125	135	85	M16	M16	6.6

Unit:mm

MODEL NO.	A	B	C	D	E	F
HCS03-120180-0150-16	120	150	180	150	60	135

MODEL NO. G H I M L Kg

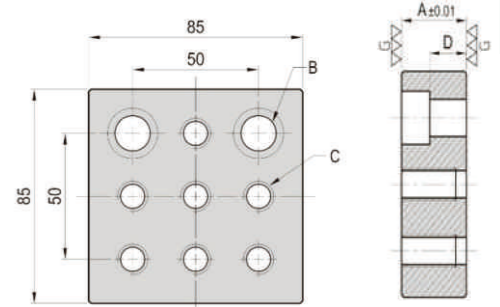
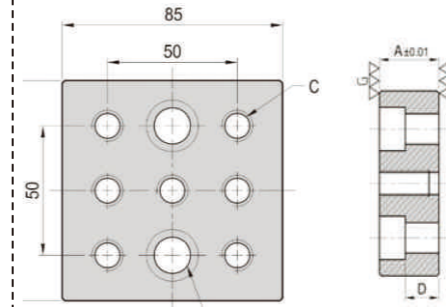
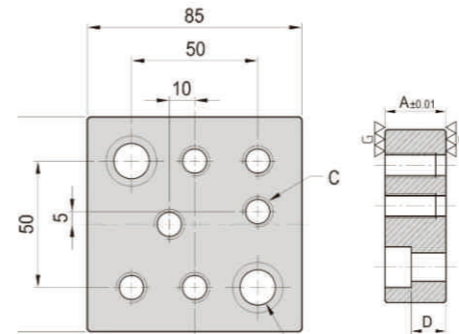
HCS03-120180-0150-16	120	123	50	M16	17	16
----------------------	-----	-----	----	-----	----	----

Special design is welcome.

# SA01 SA02 SA03

## SQUARE ADAPTER

- **Material** : S45C
- **Heat treated** : HRC 40°
- **Surface** : Black Oxide
- **Application** : AMultipurpose adapter for a variety of stops & clamps.



Unit:mm

MODEL NO	A	B	C	D	KG
SA01-1230	30			17	1.5
SA01-1240	40	M12	M12	27	2
SA01-1250	50			37	2.3
SA01-1630	30			12	1.5
SA01-1640	40	M16	M16	22	2
SA01-1650	50			32	2.3

Special design is welcome.

Unit:mm

MODEL NO.	A	B	C	D	KG
SA02-1230	30			17	1.5
SA02-1240	40	M12	M12	27	2
SA02-1250	50			37	2.3
SA02-1630	30			12	1.5
SA02-1640	40	M16	M16	22	2
SA02-1650	50			32	2.3

Unit:mm

MODEL NO.	A	B	C	D	KG
SA03-1230	30			17	1.5
SA03-1240	40	M12	M12	27	2
SA03-1250	50			37	2.3
SA03-1630	30			12	1.5
SA03-1640	40	M16	M16	22	2
SA03-1650	50			32	2.3

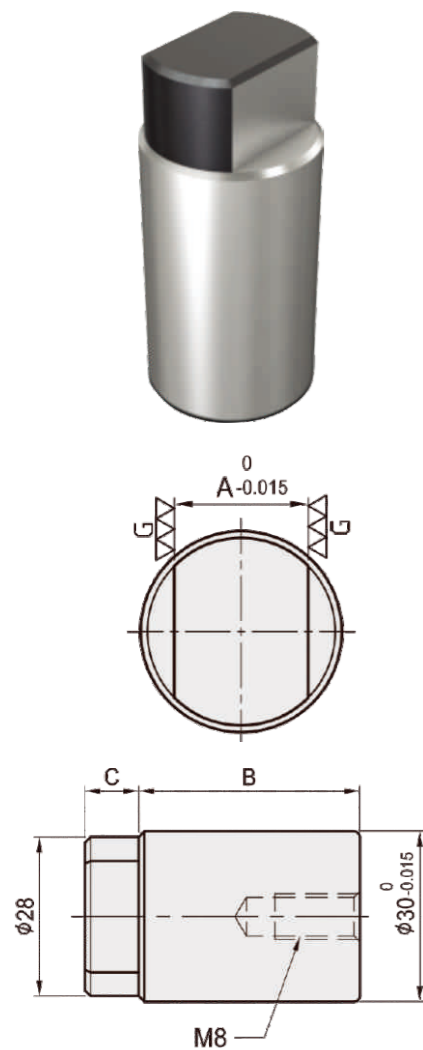
JIG AND FIXTURE

JIG AND FIXTURE

# DP01 DP02 DP03

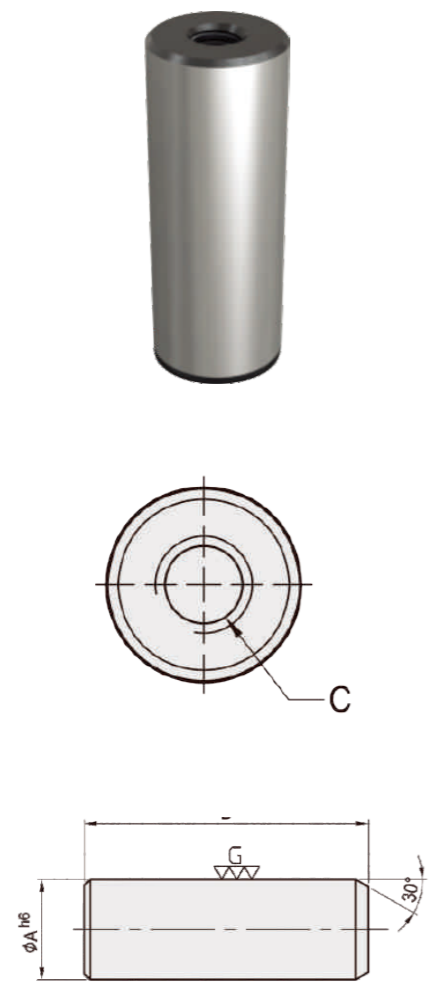
## LOCATING KEY

- **Material** : SCM440
- **Heat treated** : HRC 55°
- **Application** : Positioning the base plate with the worktable of the machining center through T-slot.



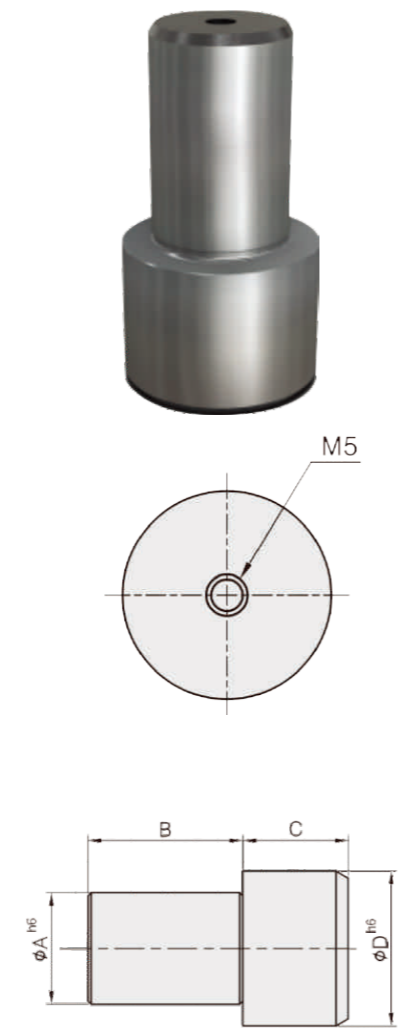
Unit:mm

MODEL NO.	A	B	C	Kg
DP01-1410	14	49	10	0.032
DP01-1815	18		15	0.033
DP01-2009	20	39	9.5	0.028
DP01-2010	20	49	10	0.033
DP01-2015			15	0.034



Unit:mm

MODEL NO.	A	B	C	Kg
DP02-0825	8	25	M4	0.010
DP02-1030	10	30	M5	0.015
DP02-1234	12	34	M6	0.030
DP02-1642	16	42		0.060
DP02-2047	20	47	M8	0.100
DP02-2549	25	49		0.160



Unit:mm

MODEL NO.	A	B	C	D	Kg
DP03-081225	8	13	12	12	0.012
DP03-121632	12	18	14	16	0.032
DP03-142037	14	22	15	20	0.052
DP03-162239	16	22	17	22	0.072
DP03-182542	18	25	17	25	0.098

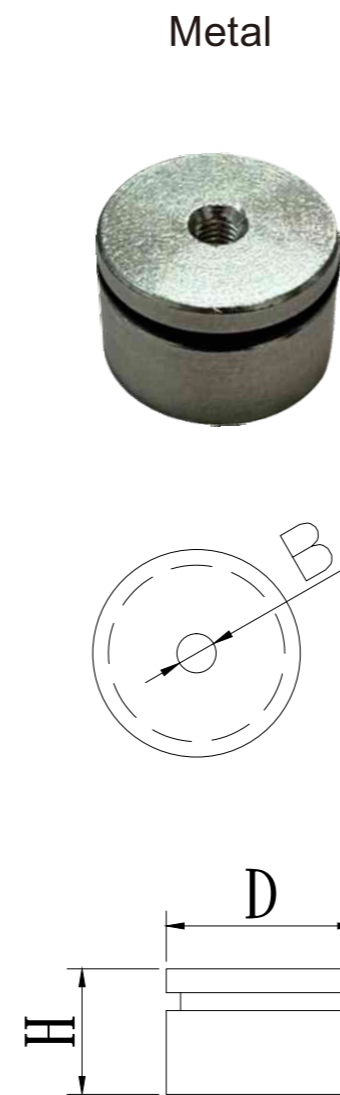
Special design is welcome.

# PP01 TI01

## LOCATING KEY

## THREADED INSERT

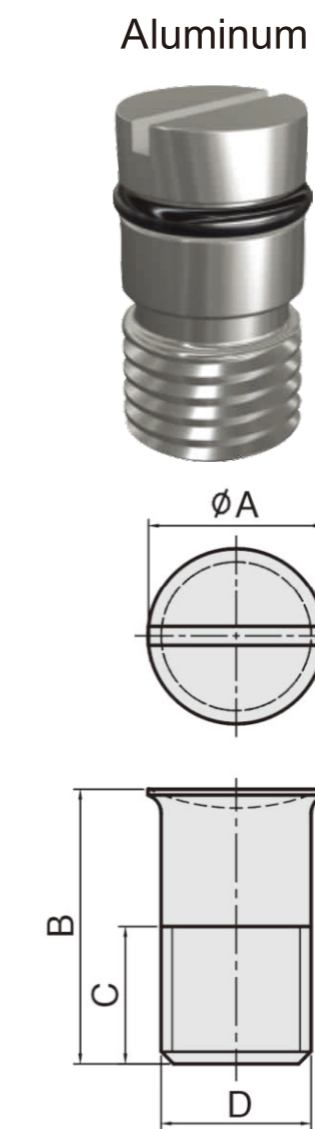
- **Material** : S45C
- **Application** : Protect unused MTP holes from Chips & dirt.
- **Features** : Prevent the chip & dirt go inside.



Unit:mm

MODEL NO.	B	D	H	Kg
PP01-12	M3	12	10.5	0.01
PP01-16	M3	16	10.5	0.012

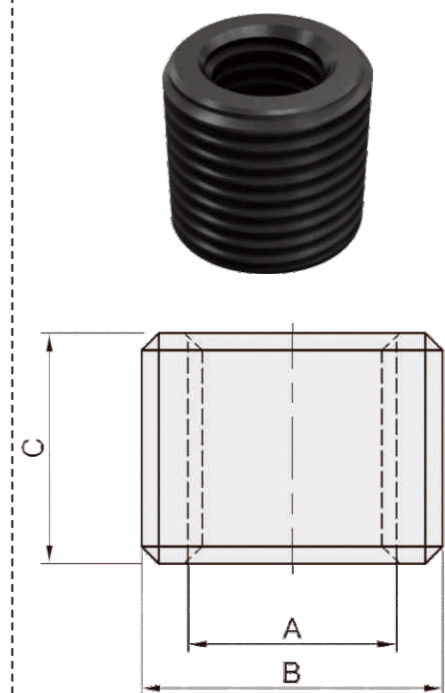
Special design is welcome.



Unit:mm

MODEL NO.	A	B	C	D	Kg
PP01-12-AL	12	25	10	M12	0.007
PP01-16-AL	16	30	11	M16	0.015

## TI01



- **Material** : S45C
  - **Heat treated** : HRC 32~35°
- Unit:mm

MODEL NO.	A	B	C	Kg
TI01-0612-10	M6x1.00	M12x1.5	10	0.005
TI01-0814-12	M8x1.25	M14x1.5	12	0.008
TI01-1016-15	M10x1.50	M16x1.5	15	0.010
TI01-1218-16	M12x1.75	M18x2	16	0.015
TI01-1420-18	M14x2.00	M20x2	18	0.030
TI01-1622-14	M15x2.00	M22x2	14	0.020
TI01-1622-20	M16x2.00	M22x2	20	0.025
TI01-2028-25	M20x2.50	M28x2	25	0.050

Special design is welcome.

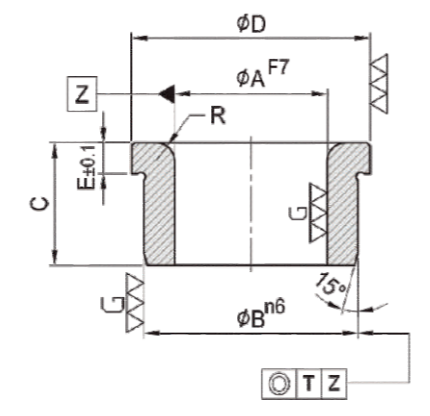
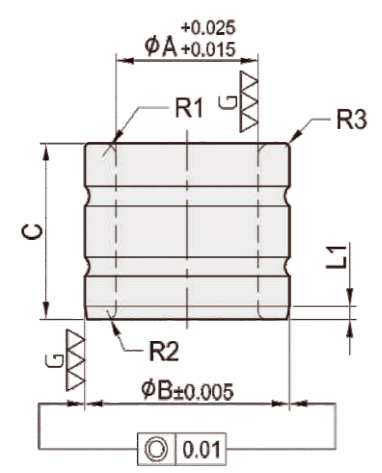
JIG AND FIXTURE

JIG AND FIXTURE

# PB01 PB02

## POSITIONING BUSHING

- Material : SUJ2
- Heat treated : HRC 60°



Unit:mm

MODEL NO.	A	B	C	R1	R2	R3	L1	Kg
PB01-0613-10	6	13	10	1.0	0.5	0.5	1.25	0.007
PB01-0815-10	8	15						0.009
PB01-1018-12	10	18	12	1.5	0.5	0.5	1.50	0.015
PB01-1220-12	12	20						0.018
PB01-1423-16	14	23	16	1.5	1.0	0.5	1.50	0.030
PB01-1523-16	15							0.028
PB01-1623-16	16	23	16	1.5	1.0	0.5	1.50	0.025
PB01-1623-20			20					0.030
PB01-1826-20	18	26	20	1.5	1.0	0.5	1.50	0.040
PB01-2030-20	20	30	20	2	1.5	0.5	2.5	0.060
PB01-2230-20	22	30						0.050
PB01-2535-20	25	35	25	2.0	1.5	0.5	2.50	0.070
PB01-3024-25	30	42						0.130
PB01-4055-30	40	55	30	2.0	2.0	1.0	3.00	0.255
PB01-5070-30	50	70						0.43

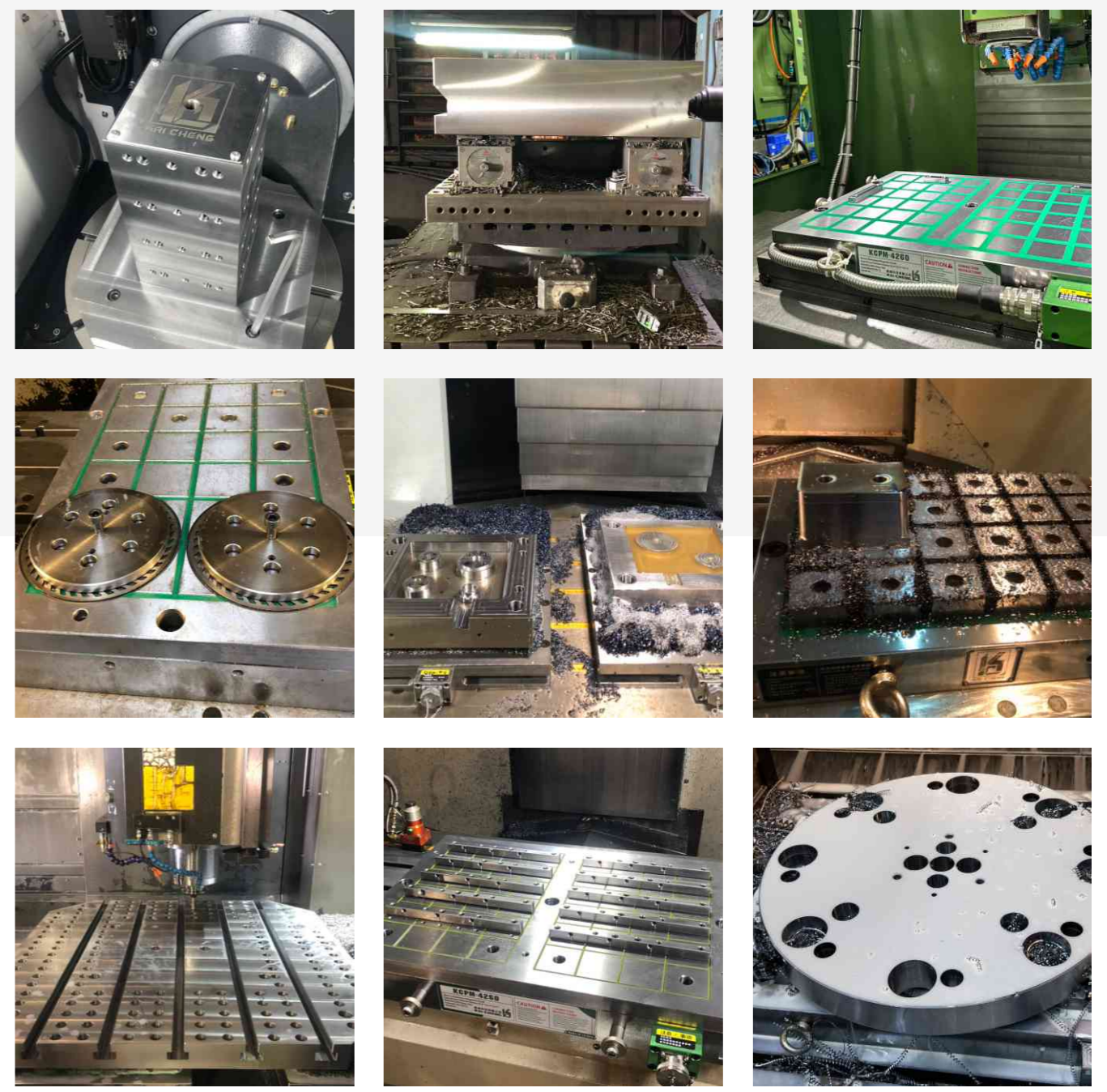
Special design is welcome.

Unit:mm

MODEL NO.	A	B	C	D	E	R	T
PB02-0615-10	6	12	10	15	3	1.5	0.01
PB02-0818-12	8	15	12	18	3	2.0	0.01
PB02-1022-12	10	18					
PB02-1226-16	12	22	16	26	4	2.0	0.01
PB02-1426-16	14						
PB02-1530-16	15	26	16	30	4	2.0	0.01
PB02-1630-16	16						
PB02-1834-20	18	30	20	34	5	3.0	0.01
PB02-2034-20	20						
PB02-2239-20	22	35	20	39	5	3.0	0.01
PB02-2539-20	25						
PB02-3052-25	30	48	25	52	5	3.0	0.01
PB02-4059-30	40	55	30	59	5	3.0	0.01
PB02-5074-30	50	70	30	74	6	3.5	0.01

# KAI CHENG

## APPLICATION EXPERT OF JIG AND FIXTURE



JIG AND FIXTURE